

# THUNDERBIRD INDEX

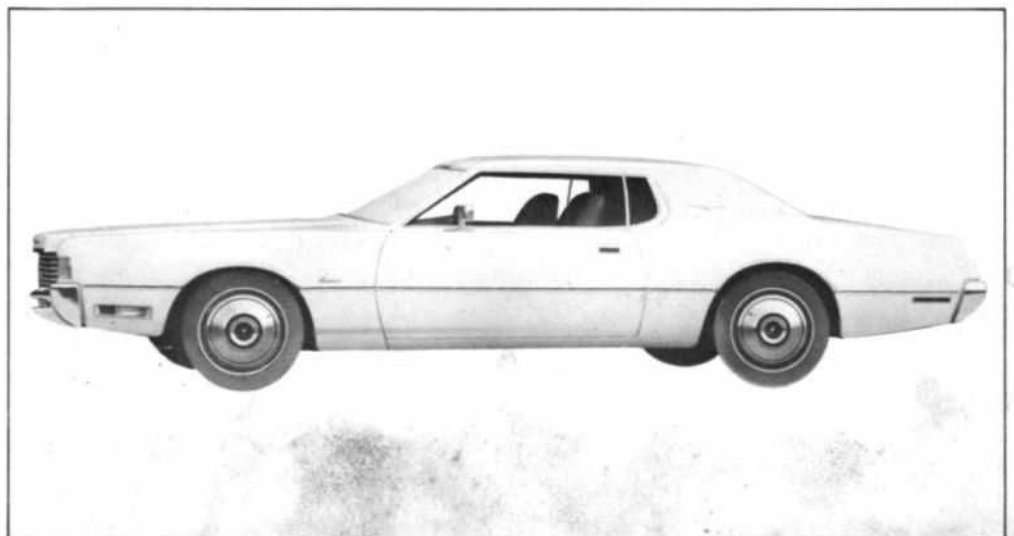
1972 THUNDERBIRD	
TWO-DOOR HARDTOP .....	4
BODY FEATURES	
Body Construction .....	8
Body Mounts .....	9
Body Sealing Material .....	9
BUMPER JACK SYSTEM .....	13
Concealed Windshield Wipers .....	11
Doors .....	12
DOOR HANDLES .....	12
Face Mounted Bumper .....	13
GRILLE .....	13
HEADLIGHTS/TAILLIGHTS .....	13
Head Restraints .....	13
Heating and Ventilation .....	13
Hood .....	11
INSTRUMENT PANEL .....	12
Insulation and Soundproofing .....	10
Luggage Compartment .....	11
Moisture Protection .....	9
Paint Process .....	9
Power Ventilation System .....	14
RUST PREVENTION .....	9
SAFETY BELTS .....	11
SEAT BELT REMINDER SYSTEM .....	11
SEATS .....	13
SIDE IMPACT PROTECTION SYSTEM .....	8
Windows .....	12
CHASSIS FEATURES	
Automatic Parking Brake Release .....	8
BRAKES .....	7
FRAME .....	6
FRONT SUSPENSION .....	7
Power Steering .....	6
REAR SUSPENSION .....	7
STEERING COLUMN .....	6
Steering Wheel .....	6
SUSPENSION SPECIFICATIONS .....	7
TIRES .....	8
Wheels .....	8
COLOR AND TRIM .....	20
MARKET DATA .....	2

OPTIONS	
Complete Options Listing .....	18
AM RADIO .....	15
AM/FM STEREO RADIO .....	15
CONVENIENCE LIGHT GROUP .....	14
Deluxe Wheel Covers .....	17
Fingertip Speed Control .....	16
FRONT CORNERING LIGHTS .....	14
FRONT AND REAR BUMPER GUARDS .....	17
GLAMOUR PAINT OPTION GROUP .....	14
HIGH-BACK BUCKET SEATS AND CONSOLE .....	17
INTERMITTENT WINDSHIELD WIPERS .....	17
Manual Reclining Passenger Seat .....	17
POWER LOCK GROUP .....	14
Power Operated Sunroof .....	15
Power Seats .....	15
Power Side Windows .....	15
REAR WINDOW ELECTRIC DEFROST .....	16
RIM BLOW DELUXE THREE-SPOKE STEERING WHEEL .....	16
SelectAire Air Conditioner with Automatic Temperature Control .....	15
Sure-Track Brake Control System .....	16
Tilt Steering Wheel .....	16
Traction-Lok Differential .....	17
TRAILER TOWING PACKAGE .....	17
TURNPIKE CONVENIENCE GROUP .....	14
VINYL ROOF .....	14
PERFORMANCE	
ENGINE .....	20
Transmission .....	20
POWER TEAM SELECTIONS .....	20
PRODUCT HIGHLIGHTS .....	3
SPECIFICATIONS .....	19
Body Dimensions .....	19
Brake Specifications .....	19
Power Team Selections .....	19
Steering Specifications .....	19
Wheel Specifications .....	19
STANDARD EQUIPMENT .....	5
NOTE: New features in bold face type	

## THUNDERBIRD... ONE MODEL

### HARDTOP

	Sales Code No.	Body Code No.
Two-Door	83	65K



THUNDERBIRD 2-DOOR HARDTOP



# THE THUNDERBIRD MARKET



Thunderbird, America's most distinguished personal luxury car, is all new for 1972. This fine automobile has been completely redesigned, inside and out, and while maintaining its attraction to the individual who wants a highly personalized unique mode of transportation, its appeals have been widened to be of interest to many people who are currently driving cars in the medium price class and LTD owners who desire to trade up.

The broad appeal of the 1972 Thunderbird is due largely to its improved product content in relation to other personal luxury cars and many vehicles in the medium price class. The net effect of the design and product actions has been to make Thunderbird marketable to a larger number of new car buyers. By lengthening the wheelbase and accentuating Thunderbird's classic styling — Thunderbird engineers have increased the size of the passenger compartment. In addition, the 1972 standard interior trim, which is on a split bench seat, is comparable to the Brougham trim option of previous years. This luxurious interior is accented by color-keyed cut pile carpeting on the floor, lower doors, and lower seat backs. The level of interior elegance has never been higher.

Buyers in the Personal Luxury segment of the market are attracted by three primary buying motivations—riding comfort, ease of handling and exterior appearance. The 1972

Thunderbird, with its longer wheelbase and all new "Posi-Ride" advanced 4-link design, rear suspension with integral stabilizer bar, provides buyers with a smooth stable ride with exceptional handling characteristics. In addition, long-lasting Michelin steel belted radial tires are now standard equipment. This, too, will contribute to a safer, more comfortable ride.

Thunderbird's exterior appearance can be personalized by any of eight hand polished glamour paints. The exclusive paints are part of a glamour paint option group which also includes color-keyed wheel covers, unique bodyside and hood paint striping and can be accented with any of five "Cayman" vinyl roofs with Landau "S" bar.

The selection of options available on the 1972 Thunderbird is the most complete in the industry. Your customer can choose from two types of air conditioning, three different audio systems or a total complement of power and convenience options. He also can enjoy the security of the "Sure-Track" braking system or the sportiness of the colorful highback bucket seats and console.

Whether it is a total Thunderbird with all available options or the standard car, the 1972 Thunderbird is an exceptional fine car value. It is certain to maintain its position as America's most distinguished personal luxury car.



THUNDERBIRD 2-DOOR HARDTOP WITH OPTIONAL VINYL ROOF AND GLAMOUR PAINT OPTION GROUP



# 1972 THUNDERBIRD PRODUCT HIGHLIGHTS



## EXTERIOR DESIGN

Thunderbird presents all new styling features for 1972. New features such as flush door handles, 60° windshield slope with thin "A" pillars and increased length and wheelbase give Thunderbird a smooth low look of formal elegance. From the front, the horizontal bar grille is flanked by dual headlights and parking/turn signal lights mounted in the forward edge of the front fenders. A wide rear roof pillar presents a formal profile, characteristic of Thunderbird's classic styling. Full length standard body side mouldings with vinyl inserts and partial wheel lip mouldings give added protection and highlight the stylish side structure. Inside the door is Ford's steel "Guard-Rail" side impact protection system. From the rear, a full width rear taillight provides 10-bulb illumination with the two outer bulbs acting as stop/turn signals.

## PERSONAL LUXURY

Thunderbird maintains its tradition of offering the best in personal luxury features. Elegant new standard interior (equal in luxury to the 1971 "Brougham" option) features a new split bench front seat upholstered in plush Lamont cloth and Corinthian vinyl. Individual pull-down center arm rests pro-



vide additional front seat comfort and convenience. Added interior luxury is provided by the use of plush deep cut-pile carpeting front and rear. The newly designed door panel features color-keyed cloth and vinyl trim highlighted by a bright framed woodtone moulding. The lower portion of the door panel is covered with carpeting as is the lower portion of the front seat backs. A convenient pull strap is located in the center of the door above the full length arm rest. The newly designed instrument panel and cluster places all instruments in convenient reach of the driver. (See features pages for additional information.)

## NEW CHASSIS

In addition to an all new exterior styling theme, Thunderbird presents many new chassis features. A longer wheelbase of 120.4 inches, new torque box "S" frame construction plus a new "Posi-Ride" four-link coil rear suspension and new front suspension system provide excellent new handling and smooth riding qualities. Thunderbird's new length (216" overall) provides additional interior room for added passenger comfort. (Rear seat leg room increased 4.4 inches.) Steel belted radial-ply Michelin tires are provided as standard equipment to give owners extra long tire life. (See features pages for additional information.)

## REGULAR FUEL STANDARD ENGINE

Thunderbird's 429 CID 4V V-8 has been refined and modified to operate on regular fuel. An original design concept of the 429 engine included efficient emission performance, and the 1972 version is yet another step toward freedom from pollutants.

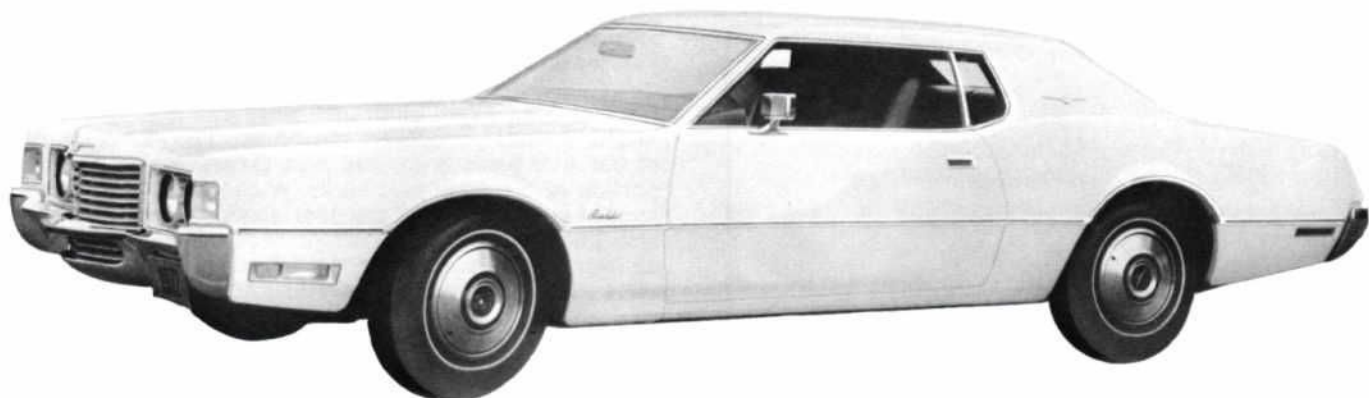
## NEW OPTIONS

Thunderbird presents a wide array of options designed to give customers a choice of comfort and convenience benefits to meet a wide variety of needs. A new power lock group includes power door locks and a trunk lid release. The door locks are electrically operated and permit both doors to be locked or unlocked simultaneously. A trailer towing package is available for '72 Thunderbird buyers. A new Glamour Paint Option Group features a hand polished finish in special paint colors. The group also includes dual body side and hood paint stripes and color-keyed wheel covers. Other new options include AM radio, vinyl roof with Landau "S" bars, front cornering lights, convenience light group, intermittent windshield wipers and spare tire cover. (See options section for additional information.)





# THUNDERBIRD HARDTOP



## MODEL

2-Door Hardtop

SALES  
NUMBER  
83

## MAJOR STANDARD FEATURES

### EXTERIOR

- New long 120.4" wheelbase, wide track . . . front, 63.0" . . . rear, 62.8" with a new overall length of 216"
- Streamlined 60° windshield slope with new slim "A" pillars . . . concealed windshield wipers
- Flush mounted door handles with keyless one-step locking
- Ventless side glass
- Distinctive ABS plastic grille . . . horizontal bar design with chrome plated leading edges framed with bright metal moulding.
- Bright chrome wrap-around front bumper with distinctive cut-out section in the center
- Bright chrome Thunderbird emblem on the extended center area above the grille
- High-level front parking/turn signal lights on forward edge of front fenders
- Full-length protective bodyside moulding with black vinyl inserts and partial wheel-lip mouldings
- Bright windshield and rear window mouldings . . . bright drip and belt mouldings
- Remote control outside left-hand mirror
- Bright chrome, Thunderbird emblem on "C" pillar
- Front and rear side marker lights
- Full bright metal wheel covers
- Full-width taillight . . . two outboard bulbs on each side operate as turn signals . . . bright Thunderbird emblem in the center
- Two horizontal reflectors below taillights
- Full width wrap-around rear bumper with back-up lights recessed on either side of license plate

### INTERIOR

- New split-bench front seats in Lamont cloth and Corinthian vinyl trim in black, dark red, dark blue, dark green or tobacco
- New front seat design features individual fold-down center arm rests and low profile head restraints
- Deep, cut pile carpeting front and rear . . . carpeting also included on lower portion of door trim panel and lower portion of front seat backs
- Color-keyed vinyl and cloth door trim panel features a pull strap and courtesy light
- New instrument panel and cluster features thick-padded energy absorbing "hood" across the top and sides (See Page F-12 for additional information.)



- Increased interior room . . . 2.5" additional shoulder room and 1.4" additional hip room in front seat. Rear seat has 4.4" additional leg room
- Seat belt retractor at both front and rear outboard seating positions
- Front seat belt reminder light and buzzer (See Page F-11)

### FUNCTIONAL

- New 429 CID 4V V-8 engine . . . runs on regular grade 91 octane fuel
- SelectShift Cruise-O-Matic transmission
- New 12-inch wide day/night mirror
- Famous Michelin steel belted radial-ply BSW tires with 40,000 mile guarantee (See Page F-5 for details.)
- Two-speed electric windshield wipers with dual stream electric windshield washers
- Power ventilation system
- MagicAire heater with 4-speed blower
- Steel "Guard Rails" side impact protection system
- Automatic parking brake release (See Page F-5 for complete list of standard equipment.)



# THUNDERBIRD STANDARD EQUIPMENT

The following features are standard on all 1972 Thunderbird models. In addition to the standard features listed, Thunderbird also includes as standard equipment the many Ford Lifeguard Design Safety Features listed on page ii.

## EXTERIOR

**BODY AND FRAME CONSTRUCTION:** fully insulated, rust resistant

**FULL-WIDTH, BRIGHT FINISHED FRONT AND REAR BUMPERS**

**DOORS:** Flush door handles . . . ventless curved side glass

**GALVANIZED ROCKER PANELS AND PRIMARY UNDERBODY COMPONENTS**

**GRILLE:** New ABS plastic with chrome plated leading edges . . . dual exposed headlamps

**HOOD:** Counterbalanced, front opening

**KEYS:** reversible type, one-step keyless door locking system

**LIGHTS:** Back-up lights

Body side marker lights, front and rear

Hazard Flasher System

Headlamps, dual exposed type with external adjustment feature

Horizontal, rectangular reflectors below taillamps

Taillamps, full width

Turn signals with lane-change feature

Turn signal and parking lamps in forward edge of front fenders

**MIRROR:** Outside lefthand, remote control, inside rearview day/night, 12-inches long. Vanity mirror on right-hand sun visor

**MOULDINGS:** Full length, body side moulding with black vinyl insert . . . partial wheelip mouldings

Bright drip moulding and belt moulding

Bright Thunderbird ornament on "C" pillar

Rear window—bright moulding all around

"Thunderbird" script on front quarter panels and rear deck lid

"Thunderbird" ornament on center of hood and taillamp

Windshield reveal mouldings, bright finish

**PAINT:** acrylic enamel, reflow baking process

**TRUNK:** Fully lined luggage compartment with light, lid counterbalanced

## WHEEL COVERS

## INTERIOR

**ACCELERATOR:** suspended type,

**ACCELERATOR AND BRAKE PEDAL PAD:** bright applique (brake pad has disc brake identification)

**ARMRESTS:** Front and rear, integral with door and quarter trim panels

Front center, pull-down type integral with split bench seat

**ASH TRAYS:** Front, in instrument panel lighted

Rear, in rear of front door arm rests, include cigar lighter and light

**BRAKE:** bright pedal trim

**BUZZER:** ignition key reminder

**CARPETING:** front and rear, cut pile, also on lower seat back, and lower door panel

**CIGARETTE LIGHTER:** in instrument panel

**CLOCK, ELECTRIC:** self-regulating

**COAT HOOKS:** two, pliable plastic safety type

**COURTESY LIGHTS:** Under instrument panel light.

Ash tray lights

Door courtesy light

Dome light

Glove compartment light

Luggage compartment light

**DOORS:** Door checks, two-stage (2-position checks)

Door handles, inside: safety-designed, "Paddle" type

Door latches: Safety-Yoke type

Door lock push button: Chrome

**GLOVE BOX:** with light and twist-type knob

**HEADLINING:** all vinyl, color-keyed

**HEAD RESTRAINTS:** for driver and front outboard passenger

**IGNITION LIGHT**

**INTERIOR DOOR LOCK:** bright buttons

**LOCK:** ignition, steering column and transmission

**MIRROR:** inside rearview (day-night) attached to windshield, vinyl backed and framed, arms and bracket are chrome plated double-ball swivel, new 12-inch length

**PADDED INSTRUMENT PANEL AND SUN VISORS**

**SEATS,** Split Bench, front; countoured, safety padded, self-locking backs with energy absorbing structure and fold-down center armrests, cloth and vinyl

**SEATS:** rear—bench-type, 3-passenger

**SEAT SIDE SHIELDS:** front—with bright mouldings

**SEAT BELTS:** metal-to-metal type; outboard front and rear lap belts are self-adjusting and retracting, uni-lock 3-point shoulder harness on front outboard seats; includes reminder light and buzzer\* for driver and front right outboard passenger

**STEERING COLUMN:** energy absorbing, locking

**STEERING WHEEL:** energy absorbing; deluxe 2-spoke

**WARNING LIGHTS:** Brake warning light

Oil, alternator, temperature lights

Seat belt reminder light

\*November 1971 availability

## FUNCTIONAL

**ALTERNATOR:** 61 ampere

**BRAKES:** Parking Brake; foot-applied, automatic vacuum release

Service Brakes; dual brake master cylinder, power disc front/drum rear, self-adjusting, hydraulic system with warning light

**ENGINE:** 429 CID, 4V V-8 8-cylinder with exhaust emission control system, positive crankcase ventilation system, regular fuel

**HEATER:** MagicAire, 4-speed blower, blend-air type

**SIDE IMPACT PROTECTION SYSTEM:** steel "Guard Rail"

**STEERING:** power

**SUSPENSION:** Front: coil springs between frame and lower arms, rubber-bushed stabilizer bar and struts

Rear: "Posi-Ride" 4-link coil with stabilizer bar

**TIRES:** 215 R15 Michelin Steel belted radial ply BSW, 40,000 mile tread guarantee\*

**TRANSMISSION:** SelectShift Cruise-O-Matic (3-speed automatic)

**VENTILATION:** power with one-way valve air outlet

**WINDSHIELD WASHERS:** electric pump actuated, dual-stream nozzles

**WINDSHIELD WIPERS:** electric 2-speed, concealed, articulated driver's side wiper arm

**\*MICHELIN MILEAGE GUARANTEE—**Every Michelin Radial Tire is guaranteed to have an original tread life of 40,000 miles. If the original tread wears out before 40,000 miles, Michelin will, upon presentation of the guarantee card and in exchange for the worn out tire, either allow a credit against the purchase of a new tire or a cash refund, at Michelin's option.

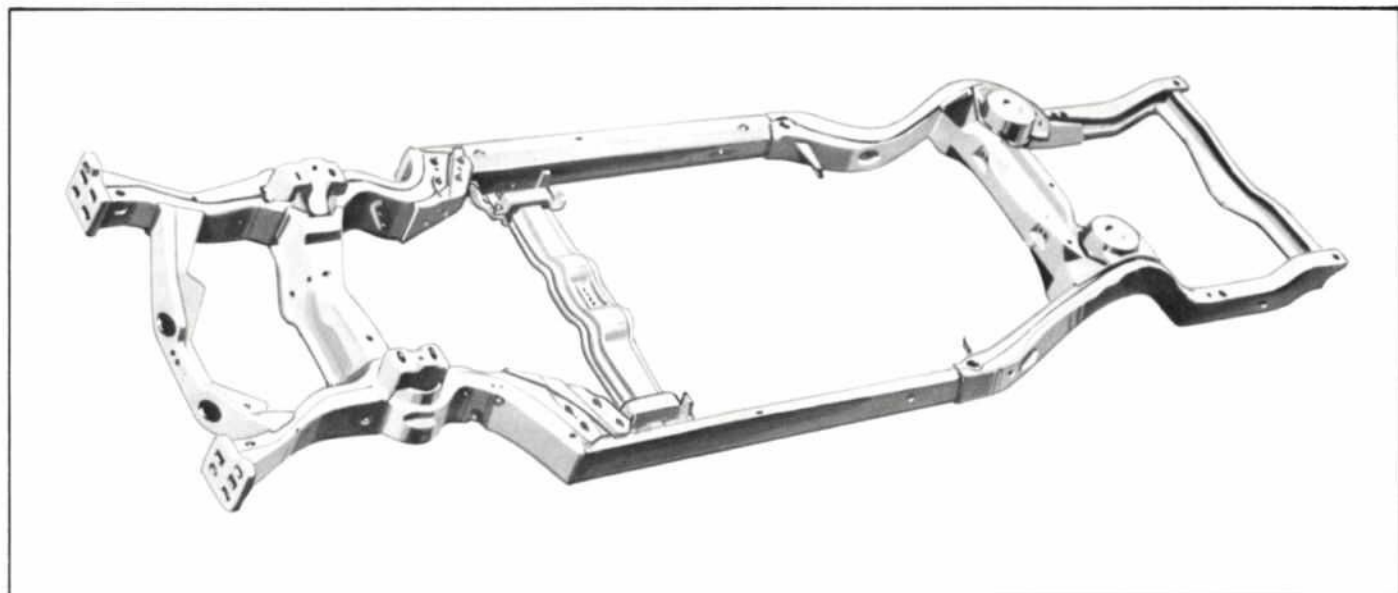
The amount of any credit or refund allowed under any Michelin guarantee will be determined by multiplying the retail price of the tire in effect at the time of the claim, including Federal Tax, by the percentage of the guaranteed mileage not actually run on the tire (based on odometer reading).

No other mileage warranty or guarantee, express or implied, exists with regard to Michelin Radial Tires other than as set forth, and no representative has authority to make any representation, promise or agreement, except as stated herein.



# THUNDERBIRD FEATURES

## CHASSIS FEATURES



### FRAME

Thunderbird for 1972 introduces a new frame incorporating Ford's famous torque box design which virtually isolates passengers from road shocks providing a smooth, more comfortable ride.

A major safety advance has been achieved by the addition of "S" shape front frame rails which increase the frame's energy-absorbing ability by controlling the rate of collapse in case of impact. Features of this design are:

**A new front frame crossmember composed of two heavy gauge stampings fused into a solid box structure by a new electron beam welding process.**

**New integral front torque boxes help reduce steering column displacement on impact and help isolate road harshness.**

**The number three crossmember, which serves as the engine rear support, is a full width steel stamping with its ends cushioned in rubber isolators to help reduce transmission of engine vibrations into the passenger car.**

**The number four crossmember is a massive formed steel plate designed for maximum strength in minimum space. Upper seats for the rear coil springs and mountings for the rear shock absorbers are welded to this crossmember and the side rails. Upper links of the new rear suspension attach to this crossmember.**

**Body mounts positioned by Ford's "bridging" principle—ahead of and behind the passengers—to separate the body from the frame and minimize noise and vibrations.**

### STEERING WHEEL

The Thunderbird steering wheel features a semi-oval rim design to improve ease of entrance.

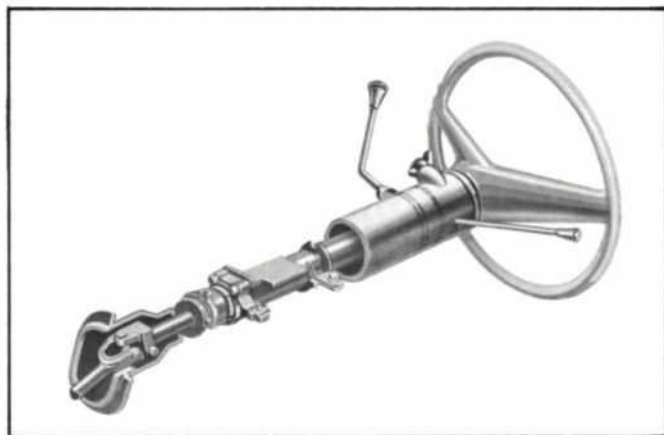
### STEERING COLUMN

A new "mini" steering column of a shorter design is used on the 1972 Thunderbird. The column assembly extends short of the dash panel. The steering shaft is connected to a universal joint and extended through the dash to a special insulator coupling at the steering gear. Because the steering column shaft is not connected directly to the steering gear,

the possibility of steering wheel shake and vibration from the frame and steering linkage is reduced.

The steering column includes a three-way locking system designed to deter theft by locking the ignition, the transmission selector and the steering wheel with the ignition switch.

The mechanism is mounted on the steering column, within convenient reach of the driver. The ignition switch has five positions: Accessory . . . Lock . . . Off . . . On . . . Start . . . in that sequence. The key cannot be removed unless the switch is moved to the "Lock" position even though the engine is turned off. Before the switch can be moved to "Lock", the transmission lever must be positioned in "Park."



### POWER STEERING

Thunderbird's steering system is a parallelogram linkage type. Features of the system include:

**A belt-driven hydraulic pump supplies the power for the control unit.**

**An integral control valve and steering gear design provide instant response to wheel movement.**

**A built-in low restriction feature of the control valve allows the wheels to return to center position after making a turn.**

**The torsion bar element of the steering shaft provides driver with "feel" of road.**

**21.73 to 1 overall steering ratio provides fast, responsive steering.**

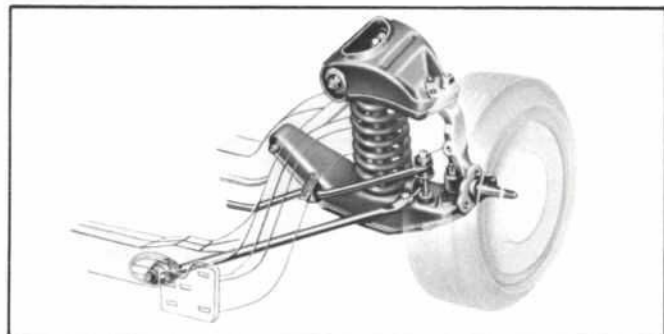
**See Page F-19 for power steering specifications.**

# THUNDERBIRD FEATURES

## Chassis Features (Cont'd)

### FRONT SUSPENSION

Thunderbird uses a short and long arm ball joint front suspension. Springs and shock absorbers are calibrated to match the weight/ride requirements of each model. Front suspension features include:



A single lower drag strut stabilizer arm, mounted to the frame through rubber bushings, eliminates metal-to-metal contact and reduces the amount of vibration and noise transmitted to the passenger area.

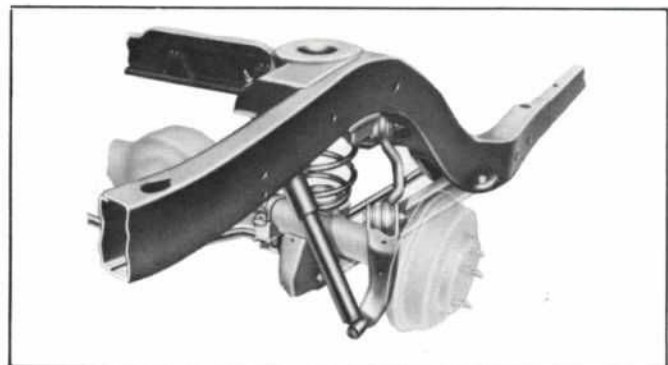
The drag struts are anchored in a new large rubber bushing allowing the wheels to move slightly toward the rear when hitting a bump. This controlled rear movement soaks up part of the initial road shock before it reaches the passenger area.

A link-type, rubber-bushed stabilizer bar connects the right- and left-hand lower suspension arms to prevent excessive lean when cornering.

An increase in the coil spring travel provides an even better luxury-car ride for 1972.

### REAR SUSPENSION

The 1972 Thunderbird uses a new "Posi-Ride" rear suspension system. The new design features a four-link system which improves stability of the car in loaded or unloaded conditions. The coil springs, as in the front suspension, are computer selected to help provide an exceptionally smooth ride. Features of the system include:



Four longitudinal arms control the position of the rear axle assembly and absorb braking and accelerating forces.

The lateral location of the axle is maintained due to the arrangement of the arms. The lower arms are splayed inward from their attachment and the short upper arms are splayed outward placing the assembly under tension laterally. This arrangement gives the car strong directional stability and resistance to side-to-side body shake on rough roads.

Coil springs ride in deep rubber insulated caps in the frame and are seated on the axle.

To a considerable extent the arrangement of the control arms stabilize the vehicle in roll; however, additional stability is assured by a link mounted rear stabilizer bar.

Shock absorbers are mounted at an angle to help provide a smoother, flatter ride.

### THUNDERBIRD SUSPENSION SPECIFICATIONS

#### FRONT

Type . . . . . Independent with Ball Joints and Drag Struts  
Springs . . . . . Helical Coil, Rubber-Insulated  
Shock Absorbers . . . . . Direct, Double Acting Hydraulic  
Stabilizer Bar . . . . . Link Type, Rubber-Bushed  
Wheel Bearings . . . . . Taper Roller

#### REAR

Type . . . . . Four-trailing Control Arms  
Springs . . . . . Helical Coil, Rubber-Insulated  
Shock Absorbers . . . . . Direct, Double Acting Hydraulic  
Stabilizer Bar . . . . . Link Type

### POWER BRAKES

All 1972 Thunderbirds have dual-hydraulic power brakes with front discs and rear drums as standard equipment. The front disc brakes are a new Ford Motor Company development that provides increased lining life, easier servicing, reduced hydraulic pressure, and increased fade resistance. Features of the new design include:



A one-piece cast-iron disc machined to precision tolerances.

Single piston-type 3.1 inch diameter caliper with inner and outer brake pads. When brakes are applied, the caliper automatically centers and pressure is applied equally through the brake pads on both sides of the rotor.

The new design uses only 12 parts versus 26 parts in previous design.

The Thunderbird brake system includes a proportioning valve which modulates the rear brake line hydraulic pressure by restricting fluid flow in proportion to the front brake line pressure . . . providing front-to-rear brake balance. In the event of front brake failure, the proportioning valve allows full cylinder pressure through a by-pass to the rear wheel cylinders to achieve maximum rear axle braking with the lowest possible partial system pedal effort. Other important features of the system include:

Each master cylinder is independent of the other with its own fluid reservoir and pumping section.

Separate connections for the brake lines link one cylinder to the front brakes and the other to the rear to maintain braking capability in the event of hydraulic pressure loss in either line.

A light mounted in the instrument panel is set to indicate a loss of hydraulic pressure in either brake line when brakes are applied.



# THUNDERBIRD FEATURES

## Chassis Features (Cont'd)

### AUTOMATIC PARKING BRAKE RELEASE

To avoid inadvertently driving with the parking brake fully, or partially on, the 1972 Thunderbird incorporates, as standard equipment, an automatic release for the brakes. When the engine is started and the shift lever is moved from the "park" or "neutral" position, a vacuum piston within the parking brake system is actuated to release the pedal and disengage the parking brake.

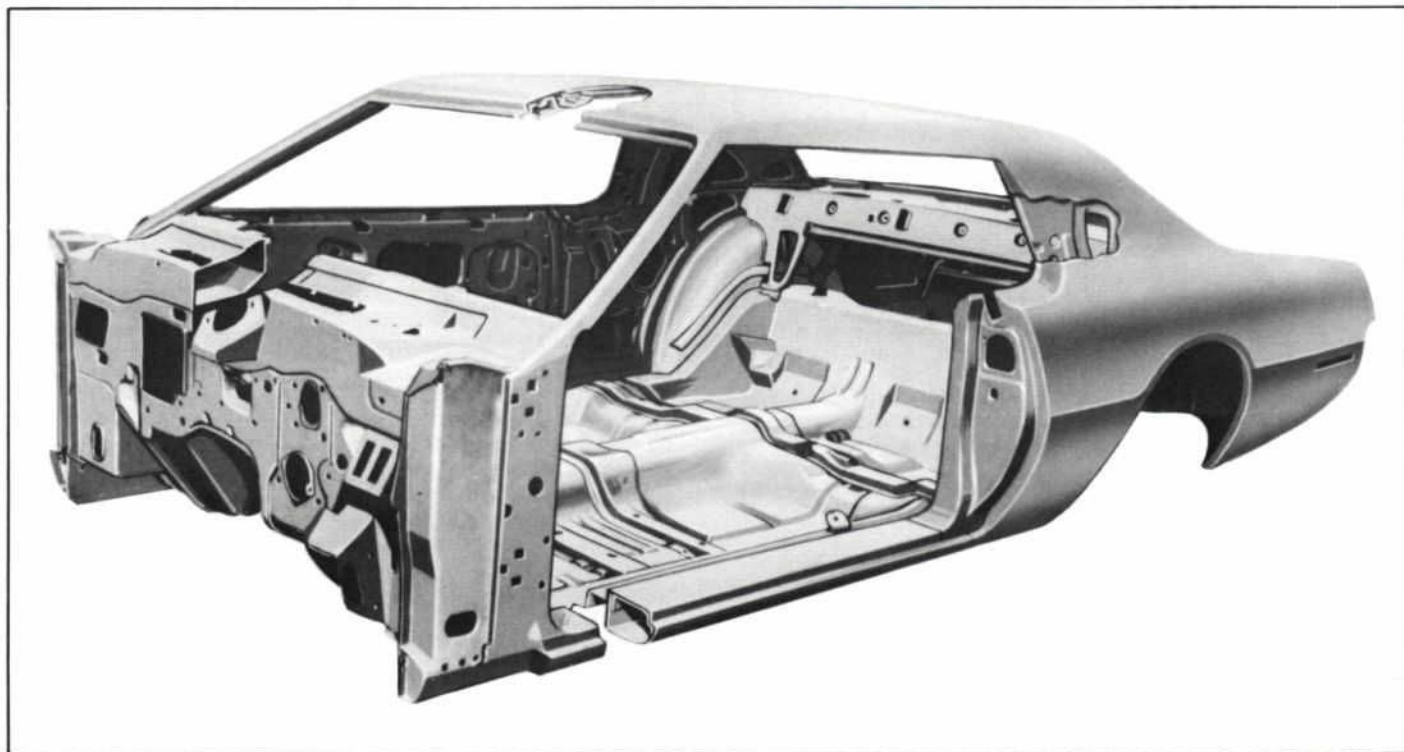
### WHEELS

All Thunderbird wheels are of stamped steel construction with a ventilated disc welded to a safety-type rim. Five large retaining nuts plus a centering pilot automatically center the wheel on the hub.

### TIRES

For 1972 Thunderbird features the famous Michelin steel-belted radial-ply black side-wall tire as standard equipment. The tires (215 R15) feature two belts of small spun-wire steel cables. They provide greater mileage than other tires and are significantly more puncture-resistant. The tires also include a 40,000 mile guarantee. (See details on page F-5.)

## BODY FEATURES



### BODY CONSTRUCTION

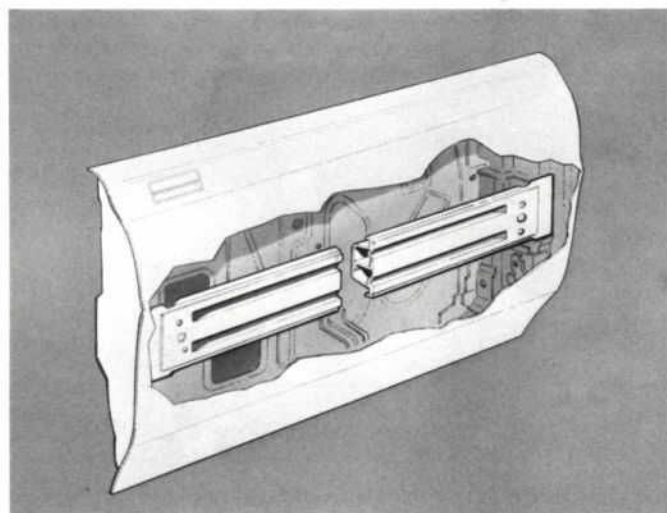
Thunderbird's rigid body structure and the unique torque box frame work together to reduce road shock, noise and vibration and prevent their being transmitted to the passenger compartment. Features that help make Thunderbird strong and quiet are:

**Rigid body construction coupled with the use of computer located body mounts in mounting the body to the torque box frame result in maximum insulation of the passengers from noise, vibration and harshness.**

**Heavy sheet metal crossmembers are used in front seat and rear sill areas. Stamped-in stiffeners add strength to the floor panel.**

**Reinforced double panel construction of the rocker panels is further strengthened by a U-channel section which acts as a secondary frame support to the body. Center and corner pillars are a box section constructed of heavy gauge sheet metal.**

**The roof construction features rigid box section rails at the front side and rear window headers with reinforcement bows under the roof panel.**



### SIDE IMPACT PROTECTION SYSTEM

1972 Thunderbirds feature a new steel "Guard Rail" side impact protection system. The rugged steel "Guard Rail" combines with the new stronger door hinges and latches to



# THUNDERBIRD FEATURES

## Body Features (Cont'd)

help provide better distribution of forces for greater protection in the event of side impact. The steel "Guard Rail" side impact system was designed and thoroughly tested to provide maximum strength and impact absorbing qualities with a minimum of additional weight. The beam structure is a flanged, tapered steel channel with a full length partition down the center and closed by a welded-on ribbed plate. The entire assembly is attached to the door end flanges and located directly inside the outer door panel.

In the event of a side impact accident the "Guard Rail" becomes a load-carrying member of the side structure system designed to resist passenger compartment penetration, and wherever possible to cause the vehicles to be deflected from each other.

## MOISTURE PROTECTION

Thunderbird's body design incorporates drain gutters to direct moisture to areas where it will do no harm. The body structure contains several applications of this design feature, one being the luggage compartment opening drain trough, which forms the perimeter of the trunk opening. The trough size is extra large to provide greater water run-off and help prevent moisture from entering the trunk.

Less noticeable is a trough beneath each back window which extends out over the wheelhouse to drain any leakage from the backlite seal away from the luggage compartment. Another trough is formed into the rear floor components to drain any unforeseen leakage from taillamp openings away from the luggage area.

All structural joints are also "shingled" in the most effective direction of overlap with relation to the expected direction of water flow.

## BODY MOUNTS

Fourteen special rubber body mounts are "computer-tuned" to specific mounting locations to help isolate the passenger compartment from the frame. The tapered design of the mounts helps eliminate road vibrations and provide a more quiet ride.

## RUST PREVENTION

To protect the bodies of all Thunderbird models against corrosion, galvanized steel is used in key body areas and a zinc-rich weld primer is also sprayed on critical body areas. Features of this anti-corrosion protection include:

**A new feature for 1972 is the use of new one-piece molded plastic front fender aprons over the wheels to help prevent corrosion and rust.**

**Use of 90% concentrated zinc solution as a weld primer.**

**Galvanized steel is used for the rocker panel and side sills and fuel filler door and hinge bracket.**

**Use of weld studs and adhesive eliminate drilled holes in body panels.**

**One way drain valves used as sealing devices to provide adequate drainage and prevent dust and dirt from entering between the body paneling.**

In addition, the Thunderbird body is subjected to a thorough sheet metal cleansing and paint preparation process. The process includes cleansing of the sheet metal by a hot alkali solution, a complete spraying with zinc phosphate and washing with chromic and phosphoric acid. This cleansing process contributes materially to the remarkable finish on the car.

Selected areas of the underbody are also given heavy coats of high quality undercoating to complete the anti-rust protection treatment.

## PAINT PROCESS

Thunderbird uses the "reflow" paint method to produce a high-lustre durable finish.

The "reflow" process basically consists of a two-stage curing cycle where after the initial paint application, the enamel is partially baked for only 15 minutes, cooled, and then inspected for defects. Any required spot repainting is performed without sanding and repainting entire panels, as required in conventional painting systems. The car then goes through the second stage bake at a higher temperature of 245°F for approximately 8 minutes. During this second baking or "reflow" cycle, the overspray and surface pattern effects from any repainting all blend into the original enamel film. Advantages of this process include improved final paint appearance; higher gloss; improved image reflection; less haze; greater paint film clarity.

The final coat of paint on all Thunderbirds is applied by **ELECTROSTATIC PAINTING**, a new system that produces a better, more uniform paint finish. The system features a new paint gun that works on the principle that unlike electrical charges attract each other; i.e., positive charged particles attract negative ones. An electrode, extending through the barrel of the gun, is held at a negative potential of 60,000 volts with respect to the part to be painted. The tip of the electrode is located so that air atomized paint particles pass through charged air particles and pick up a strong negative charge. The paint particles are propelled to the body surface by air pressure. As the paint particles near the surface, the electrostatic forces become great enough so that many of those paint particles normally blown past by the air stream are returned to the body surface. The principal advantage of electrostatic painting is the "wrap-around" effect. When painting next to an edge, such as on a deck lid, hood, or door, the paint particles actually wrap around and paint the backside due to the strong electrostatic attraction.

## BODY SEALING MATERIAL

The following joint sealers and special anti-squeak and sealing devices are used in the Thunderbird to help assure a comfortable, quiet ride:

Special plastic sealing material applied to exposed spot-welded body panel seams and joints.

Vinyl plastic sealer on the drip rails and rear deck trough.

Windshields and backlites sealed with butyl tape.

Special pads, grommets, seals and plug buttons guard against water, dust and drafts.

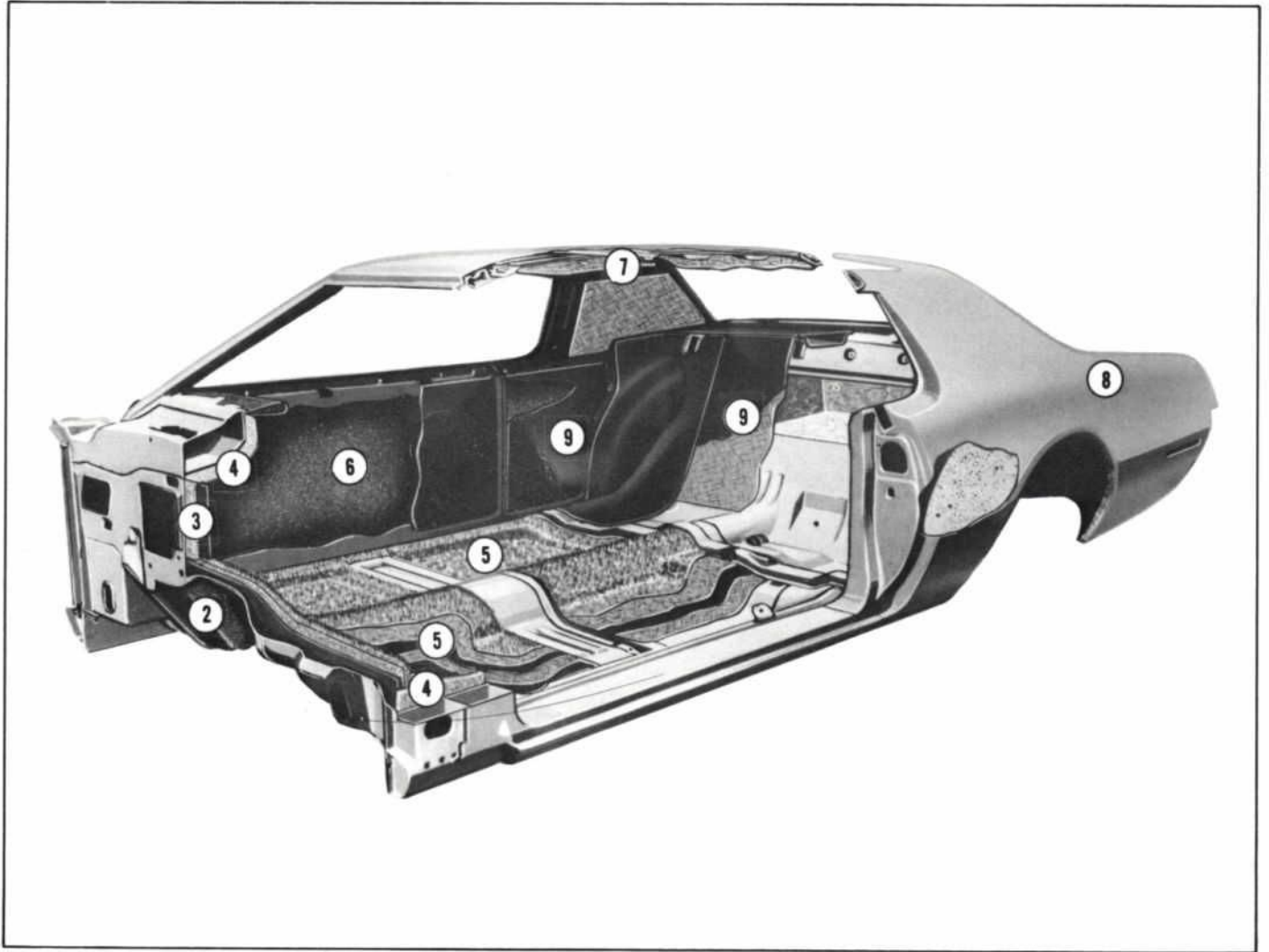
Heat-curing sealer applied to all other panel seams and joints.

Large diameter tubular weatherstripping provides tight seals around all doors.



# THUNDERBIRD FEATURES

## Body Features (Cont'd)



### INSULATION AND SOUNDPROOFING

Thunderbird's insulation and soundproofing effectively reduce engine, transmission, power train and road noises . . . and also provide increased protection against heat and cold.

- (1) The hood has mastic adhesive spotted between the inner and outer panels, and one-eighth-inch thick high density glass fiber pads are cemented to the underside of the hood to absorb and deaden engine noises.
- (2) Selected portions of the underbody are sprayed with sound deadener coating.
- (3) Molded textile-fiber insulator pads with plastisol coating on the rear side are used on the dash panel.
- (4) One-half-inch fiberglass pads are cemented to the cowl sides and the underside of the cowl top panel is covered with a heavy fiber pad, serving as both a heat insulator and sound deadener.
- (5) The front floor pan and tunnel sides are covered with a new semi-septum type material consisting of crepe kraft-coated heavy mastic combined with one-quarter-inch fiber batting. In addition, the entire tunnel top is covered with fiberglass and aluminum foil pads. The rear passenger floor area, floor side risers and floor rear risers are covered with a layer of crepe kraft-coated heavy mastic. Both the front and rear floor carpeting is padded with a thick jute pad.
- (6) Spray-on sound deadener coating is applied to the inner surfaces of the door and quarter panels and an Amberlite deadener pad is placed between the trim panel and the water shield.
- (7) Sound deadener felt strips are placed between the cross braces and the underside of the roof panel. One-half-inch thick, high-density fiber pads cover the roof sections between the cross braces, and thick glass fiber covers the inside of the roof rear pillars.
- (8) The deck lid has inner and outer panel construction, with mastic adhesive spotted between the panels. The luggage compartment floor is covered with a felt mat. Side panels are lined with heavy fiber panels.
- (9) The rear wheel housings and seat back strainer are covered with  $\frac{3}{8}$ " fiber pad with polyethylene film. Quarter inner panels are covered with a  $\frac{3}{8}$ " fiber pad.



# THUNDERBIRD FEATURES

## Body Features (Cont'd)



### HOOD

The Thunderbird hood features double panel construction with the inner panel formed into channel type reinforcing sections. The inner and outer panels are welded at the outer edges of both panels, and the reinforcing channels are bonded to the outer panel with a special heat-cured adhesive. The power dome section of the hood forms a deep channel from front to rear that gives added strength and rigidity.

Fiberglass padding bonded to the underside of the hood panel minimizes engine noise. A full-width cowl seal and adjustable, molded rubber pads at the fender line help seal and align the hood with the fender line. Counter-balancing coil springs and double link hinges provide for easy raising and lowering of the hood.



### LUGGAGE COMPARTMENT

The 1972 Thunderbird offers 13.9 cubic feet of usable luggage compartment capacity. The entire luggage compartment area is lined with a mat to help prevent scuffing of cargo.

The spare tire is mounted on a raised shelf over the gas tank, providing a large unobstructed area for stowage.

Built-in torsion bars assist in raising the deck lid and help to hold it open. Compression type, neoprene rubber weatherstripping provides protection against dirt and moisture.

### CONCEALED WINDSHIELD WIPERS

Windshield wipers on the 1972 Thunderbird are recessed below the line of sight on the cowl. Windshield glass extends downward into the hidden wiper slot so that wiper blades are never required to rest off the glass as in some competitive systems.



### SAFETY BELTS

All Thunderbirds include seat belt retractors at the front (and rear\*) outboard seating positions. In the front, the retractors form part of the seat belt reminder system. In the rear, the retractors are hidden below the seat, with the belt guiding between the seat and trim panel.

Thunderbird also includes a "Uni-Lock" three-point safety harness for the outboard front seat passengers. This design eliminates the shoulder harness buckle and permits more convenient and faster "buckle up." During use, the driver or outboard front seat passenger pulls the belt out of the retractor and "snaps" it into the buckle—the lap belt length is automatically maintained by the retractor. The shoulder belt is then attached to the lap belt buckle and adjusted as necessary. The shoulder belt may be left attached to the buckle, requiring only buckle insertion.

\*December 1971 availability.

### FRONT SEAT BELT REMINDER SYSTEM

New for 1972 is a positive front seat belt reminder system. This system includes a light and buzzer\* mounted in the instrument panel which are activated by sensors if an attempt is made to drive the car without the driver and front seat passenger (if aboard) first fastening their seat belts. The light and buzzer operate when the ignition switch is in the "On" position, the transmission is in any forward or reverse position and the driver's belt is not extended the distance normally used for fastening. If the right outboard seat is occupied, the switch in the seat also activates the system until the passenger seat belt is pulled out the specified distance. When the belt, or belts, are extended the light and buzzer go off, and will remain off unless the belts are retracted.

\*November 1971 availability.



# THUNDERBIRD FEATURES

## Body Features (Cont'd)

### WINDOWS

All Thunderbird windows are high-strength, impact resistant heat tempered glass. The windshield is constructed of two sheets of glass which are sandwiched to a 30-mil-thick plastic sheet and heat laminated together. This type of windshield construction provides exceptional strength and pliability which enables the windshield to take "more stretch and impact" without injury-producing penetration.

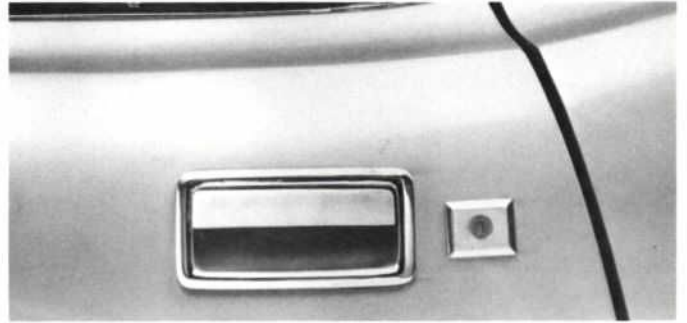
The ventless, front side windows complement Thunderbird's clean styling lines, reduce wind noise and provide increased driver/passenger visibility. A new side glass regulator bracket features bolts that pass through holes near the bottom of the glass to mechanically retain the side glass.



### DOORS

The Thunderbird doors are formed into a warp-free, sturdy box unit through the use of double panel, welded construction. Bronze-bushed hinges provide long wear and easy opening and closing. All doors incorporate check straps to hold the doors in the full open position. The check straps also provide an intermediate door check position to

aid entry and exit when parked in close quarters. Compression type weather sealing provides a tight seal and low resistance to door closing. New stronger, bear-hug door latches are enclosed in the door sheet metal. The latches provide secure closing, easy opening, rattle resistance and help protect against accidental opening on impact.



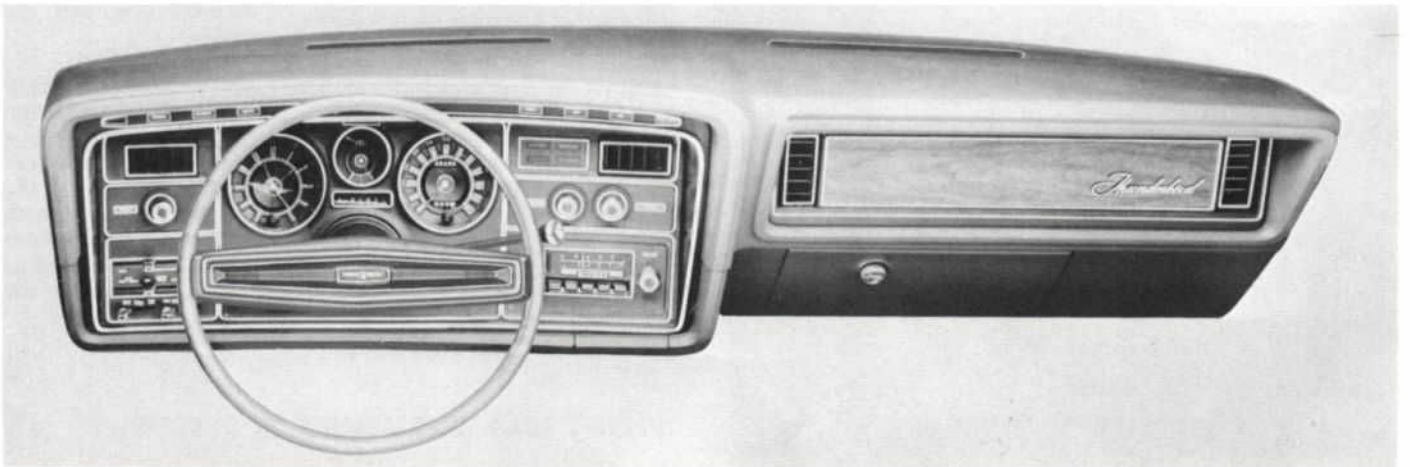
### DOOR HANDLES

Thunderbird's new exterior handles are pull-out type, mounted flush with the door surface. They are encased in a bright metal frame.

Keyless one step locking is also a new feature for 1972. The doors may be locked from the outside by simply depressing the inside door lock control knob, and then closing the door. With the incorporation of the outside flush door handles, the need to depress a push-button for locking is no longer required.

The inside door handle is recessed in the side of the full length arm rest. The handle is a "paddle-shape" and actuates the door latch when pulled outward with the fingertips. The handle overrides the locking mechanism, eliminating the need to raise the door lock button from its locked position.

A convenient pull strap is mounted in the center of the door above the arm rest for pulling the door closed from the extended position.



### INSTRUMENT PANEL

Thunderbird's instrument panel is a new steel/plastic design with increased impact absorption qualities. The upper portion of the panel is padded sheet metal while the lower portion is a molded ABS plastic with a textured vinyl-like surface. The instrument cluster and controls are enclosed in a large hooded rectangle directly in front of the driver. The clock, fuel gauge and speedometer/odometer are located in the center of the cluster. To the left are air register, light switch and heater or optional air conditioning controls. In the right portion of the cluster are an air register, windshield

wiper/washer controls, cigarette lighter, optional radio and a lighted pull-out ash tray. A narrow strip above the cluster contains the high beam light, brake light, the temperature, alternator, and oil lights. The seat belt reminder light is centered above the fuel gauge.

The passenger side of the panel is highlighted by a woodtone rectangular applique and includes two air registers. The glove box door has a new twist-type knob with a deep finger grip recess to facilitate opening.



# THUNDERBIRD FEATURES

## Body Features (Cont'd)

### SEATS

Thunderbird's new standard split-bench type front seats are individually adjustable and have separate center pull-down arm-rests. The seat provides ample room for three passengers or, with the center armrests lowered, individual driver/passenger bucket-seat style comfort. Construction features of the seat include:

**Seat frame members in a sturdy box section and channel design.**

**Main springs pre-formed for comfortable support over the entire cushion and seat back.**

**Heavy fabric pad covers the springs and protects the thick foam padding.**

**Thick, 2½" molded urethane front seat cushions for extra seating comfort.**

**Front seat tracks arched to change the angle of the seat back as the seat is adjusted forward or backward.**

**Folding front seat backs self-lock into an upright position. A lever on the side of the seat back releases the lock for rear seat passenger entry and exit. An automatic release is also available as an option.**

**With Thunderbird's new body length, rear seat passengers enjoy an additional 4.1-inches more leg room over previous hardtop models.**



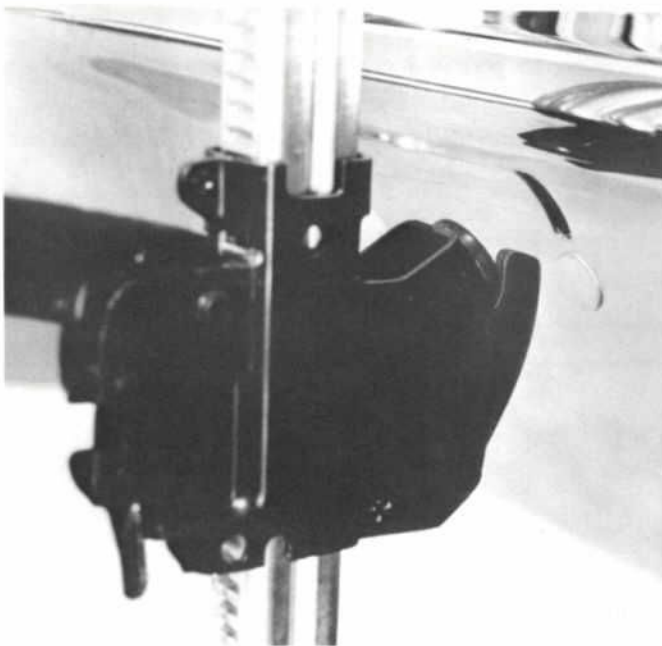
### HEAD RESTRAINTS

New low profile head restraints for the driver and front seat passenger are standard equipment. The restraints are vertically adjustable and feature energy-absorbing padding covered with cloth and vinyl, color-keyed to the interior. Optional, high-back bucket seats require no separate restraints as their height acts as a restraint.

### FACE-MOUNTED BUMPER

Thunderbird's front bumper is face-mounted during assembly to permit adjustment in three directions. This precise method of adjusting the bumper makes possible the striking

appearance of Thunderbird's integrated bumper/grille design and reduces the possibility of unsightly gaps due to possible misalignment.



### BUMPER JACK SYSTEM

The 1972 Thunderbird is equipped with a new pin and slot bumper jack system. The new design eliminates the hook that normally connects to the bottom of the bumper. Instead, a flat pin, integral with the ratchet mechanism, fits into slots pierced into the bumper. The new system provides faster, simpler operation with more positive retention.

### GRILLE

The 1972 Thunderbird grille is a black ABS plastic center grille with chrome plated leading edges. The outer grille areas are zinc die cast and carry the same horizontal bar design. The bright moulding framing the grille and headlights is a chrome plated zinc die casting.

### HEADLIGHTS/TAILLIGHTS

The 1972 Thunderbird has exposed, dual headlights. Provision for external headlamp adjustment permits precise headlamp alignment in minutes, without removing the headlight trim rings.

The full width taillight includes 10 bulbs serving as running lights, with the two outboard bulbs on each side serving as stop lights and turn signal lights.

### HEATING AND VENTILATION

Thunderbird's MagicAire heater and defroster have a large heater core to provide fast warm-up and efficient defrosting.

The powerful four-speed blower motor is located behind the instrument panel. The heater system operates in conjunction with the Power Ventilation system. Fresh outside air is brought in through the cowl vent, heated, and distributed through the conventional ducts below the instrument panel. The instrument panel registers may also be used for warm air distribution. Stale air is exhausted from the passenger compartment through pressure relief valves on the rear quarter door lock pillars.



# THUNDERBIRD FEATURES

## Body Features (Cont'd)

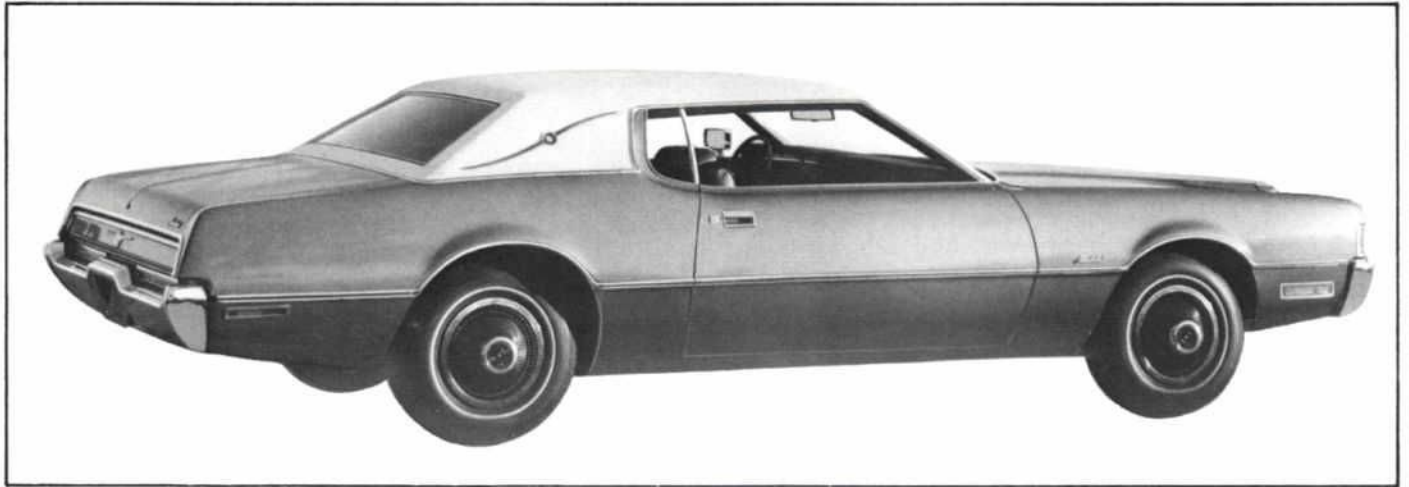
### POWER VENTILATION SYSTEM

A power ventilation system is standard equipment on all Thunderbirds. The system is integrated with the heating system ducts to permit a continuous exchange of fresh air within the passenger compartment.

Air intake is provided either by the ram air effect of the car

in motion, or by the four-speed blower when the car is at a standstill. This blower system is "demand" in nature and operates only when the occupants of the car so desire. The fresh air is distributed throughout the passenger area through adjustable registers in the left, center and right of the instrument panel. Stale air is routed through the trunk compartment and inner body quarter panels and out through one-way pressure relief valves in the door lock pillar.

## THUNDERBIRD OPTIONS



### VINYL ROOF

Thunderbird's vinyl roof option for 1972 includes distinctive Landau bars mounted on the "C" pillars. The bars include the Thunderbird emblem in the center with simulated wood-grain inserts on the arms. The vinyl roof covering in "Cayman" design is available in black, white, blue, green or brown.

### GLAMOUR PAINT OPTION GROUP

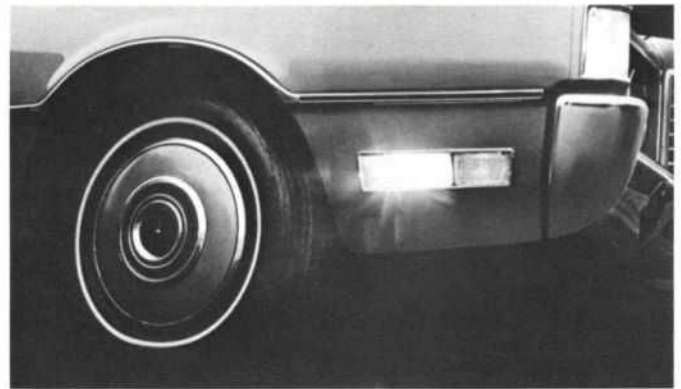
The glamour paint option gives an elegant deep-luster finish to the 1972 Thunderbirds. The special paint creates the illusion of extra depth due to the control and size of aluminum particles in the paint formula. The clarity and transparent characteristics of the highly durable surface is achieved by a final hand-polishing process. Glamour paint finishes are available in Blue Fire, Green Fire, Walnut Fire, Gold Fire, Copper Fire, Burgundy Fire, Lime Fire, and Cinnamon Fire. This option also includes color-keyed wheel covers, body side and hood paint stripes, and tooled silver Landau bar inserts (when vinyl roof is ordered).

### CONVENIENCE LIGHT GROUP

This option includes low fuel flasher and door-ajar warning lights, front "lights-on" warning light and buzzer, dual overhead map lights, and engine compartment light.

### TURNPIKE CONVENIENCE GROUP

This option group is ideally suited for buyers who frequently travel long distances. Included in the option are: fingertip speed control, manual reclining passenger seat and trip odometer.



### FRONT CORNERING LIGHTS

Front cornering lights are designed for safer turning of corners. The cornering lights are integral with the side marker light and cast a beam to the front and side when cornering with headlights on. The light is activated with the turn signal lever and remains on until the turn signal lever returns to its center position.

### POWER LOCK GROUP

This new convenience option features a new all electric operation. The door lock buttons actuate switches connected to electric motor driven servos in the door. Raising either button unlocks both door locks, and lowering either button locks both locks. This option also includes a power trunk lid release. The release button is located on the inside left edge of the glove compartment.



# THUNDERBIRD OPTIONS



## POWER SIDE WINDOWS

Thunderbird's power window controls are conveniently located in the "control console" on the driver's door armrest to let the driver adjust all windows as desired. A master overriding lock feature can be used to lock out operation of individual passenger controls which are located on the passenger door armrest and rear quarter trim panels.

## POWER SEATS

Six-way power seat controls are located in the driver's "control console" on the driver's door armrest. This luxury option permits easy selection of the most comfortable driving position and the armrest location allows changing position easily while driving. The six-way seat moves up and down — forward and back — and tilts fore and aft. With split bench or bucket seats, power seat may be ordered on driver's seat only or driver's and passenger's seats.

## AM RADIO

Thunderbird's AM radio option features new, more reliable circuitry and improved reception. The new radio has a power output increase from two to four watts and includes front door mounted speakers and dual rear seat speakers.



## AM/FM STEREO RADIO

Thunderbird's AM/FM stereo radio includes a completely new circuitry with increased sensitivity for retaining weak

signals. The power output is increased from three to four watts per channel to increase overall clarity and tonal range. The AM/FM stereo radio allows a choice of AM, AM/FM stereo reception merely by moving the function selector switch. Stereo multiplex operation is indicated by an amber light on the radio faceplate. "5 x 10" push button feature allows the five push buttons to be preset to provide five AM and five FM stations. Balance and fader controls allow exact blending of sound from the four-speaker system. Two front speakers (one in each front door) and two package tray mounted rear speakers are standard with the AM/FM Stereo Radio.



## POWER OPERATED SUNROOF

This popular option allows the Thunderbird owner to achieve the open-air advantages of the Convertible and the styling features of a Hardtop. The sunroof is powered by an electric motor actuated by a fingertip control on the headliner. When closed, the sunroof matches the roof line and seals tightly in position. When opened, the sunroof slides down, back, and out of sight on a hidden track between the headliner and the roof. A vinyl roof is required at extra cost.

## SELECTAIRE AIR CONDITIONER WITH AUTOMATIC TEMPERATURE CONTROL

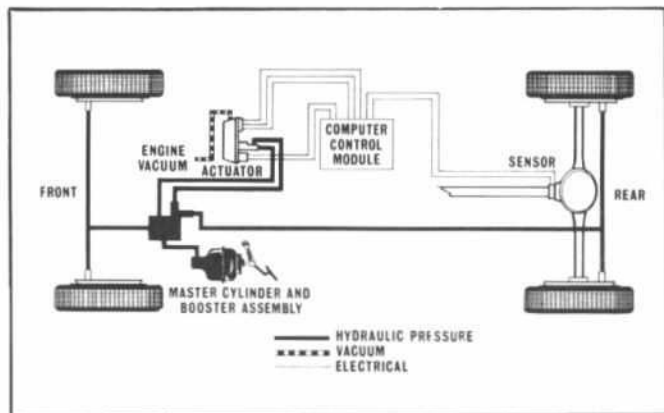
SelectAire air conditioning with Automatic Temperature Control allows the Thunderbird owner to control interior comfort during all seasons, by setting one control and forgetting it. In warm weather, cooling action begins as soon as the engine is started; in cold weather, heat is delayed until the engine is warm enough to provide good heating action.

When window fogging or icing conditions are encountered, the SelectAire selector is moved manually to the "Defog" or "Deice" position. Once the glass is clear, the lever may be turned to the automatic position and automatic temperature control takes over again.

The system includes a new air-conditioning unit that has higher capacity, improved dehumidification, increased air flow and a lower noise level.

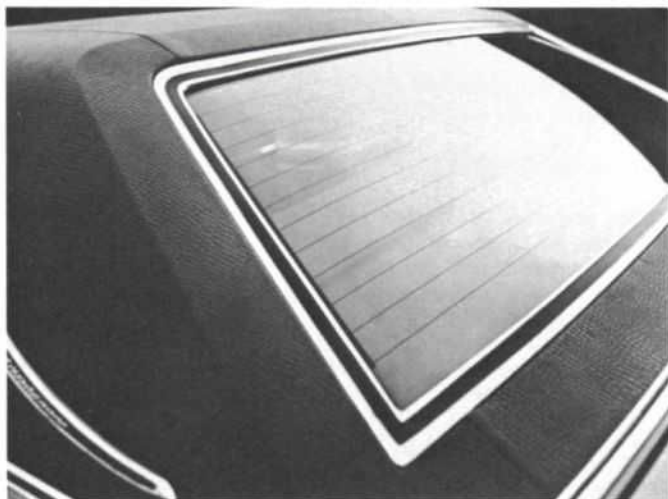


# THUNDERBIRD OPTIONS



## SURE-TRACK BRAKE CONTROL SYSTEM

Thunderbird's Sure-Track Brake Control System improves braking stability during maximum braking effort by helping to prevent sustained rear wheel lockup, even on ice or snow. The system becomes important when you remember that sliding or skidding rear wheels may allow the car to spin causing total loss of control, especially if dry pavement is encountered when the car is sliding sideways. During normal braking the majority of the car's weight transfers to the front wheels unloading the rear wheels and making them prone to locking and skidding. The system has three major components: sensor, control module and an actuator, all of which function to release braking pressure to the skid prone rear wheels. The sensor transmits the wheel speed to the control module. The control module analyzes the speed and "commands" the actuator to release brake pressure. The actuator regulates the brake fluid pressure on the rear wheel brakes in a manner to resist wheel lockup. By keeping the rear wheels rolling, directional stability is maintained.

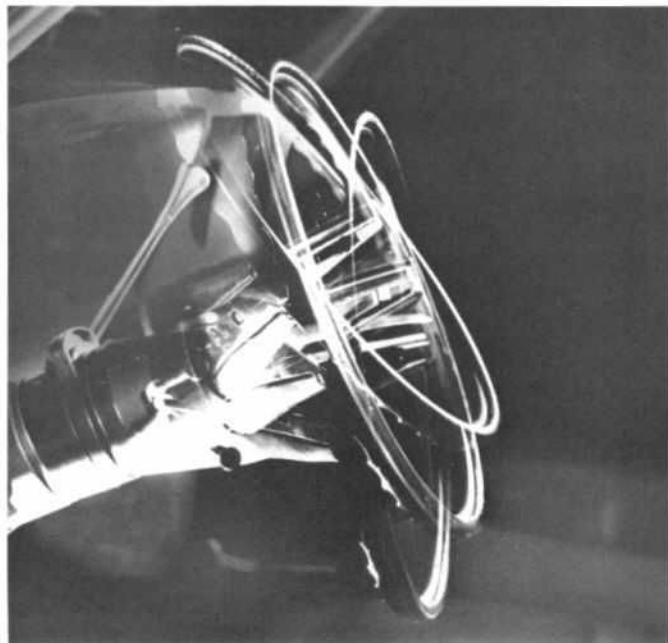


## REAR WINDOW ELECTRIC DEFROST

This "Better Idea" option helps keep the backlite frost-free and will remove snow, frost, and up to 1/8-inch of ice in minutes. An increase of more than 80% in the watt output per square inch of glass area reduces the time required to defog the glass interior and provides more positive ice and snow melting capabilities. The heating unit consists of a silver-filled, ceramic, high-resistance printed electrical circuit, silk-screened onto the inside of the backlite. While visible as a series of 1/32-inch wide lines across the full width of the backlite, the unit does not interfere with the driver's rear vision due to the wide spacing between the lines and a new subdued less conspicuous dark red color. A switch for operating the unit is integral with the heater controls on the instrument panel. The option includes a "reminder" light which indicates when the unit is "on."

## RIM-BLOW DELUXE 3-SPOKE STEERING WHEEL

This distinctive option features a "Rim-Blow" horn switch built into the inner rim of the steering wheel. An added look of elegance is achieved with a simulated walnut wood grained wheel and the unique three-spoke design with wood-tone inserts.



## TILT STEERING WHEEL

Thunderbird's Tilt Steering Wheel allows the driver to select any one of five steering wheel angles by pushing forward on the turn signal lever. When the car and engine are stopped, the wheel can be placed in the maximum "up" position for easier entry/exit.



## FINGERTIP SPEED CONTROL

The fingertip speed control regulates vehicle speed automatically and maintains a set speed at a desired level, until reset or turned off. The controls are conveniently located in the spokes of the steering wheel. When in the "On" position, the speed control can be set to maintain any speed from 30 to 80 mph—by attaining that speed and pressing the "Set" button on the right side of the steering wheel.

The system is de-activated when either (1) the brakes are applied, (2) the car slows to approximately 10 mph below the set speed, (3) the speed control on/off switch is turned off or, (4) the ignition switch is turned off. The system will not operate below 30 mph or above 80 mph. The option includes the "Rim-Blow" deluxe two-spoke steering wheel.



# THUNDERBIRD OPTIONS

## HIGH-BACK BUCKET SEATS AND CONSOLE

Thunderbird's new high-back bucket seats are trimmed in hopsack cloth, and the door trim panels feature unique hopsack cloth inserts. The option also includes a newly designed center console, which features a built-in tissue dispenser and a storage compartment with padded cover.



## MANUAL RECLINING PASSENGER SEAT

A reclining passenger seat is available with either the high-back bucket seats or the split bench seats and includes a convenient seatside control lever. It is standard with the Turnpike Convenience Group.

## "TRACTION-LOK" DIFFERENTIAL

Ford's "Traction-Lok" differential is designed to lock the rear wheels together in proportion to the driving torque applied. The "Traction-Lok" differential provides extra traction on ice, mud or snow, and maximum accelerating power. (See the Power Teams section for more information.)

## INTERMITTENT WINDSHIELD WIPERS

This new option allows Thunderbird owners to adjust the wiper speed to fit the weather conditions. The wipers can be adjusted to provide a pause between each wiping cycle. The length of the pause may be controlled by the driver from two- to ten-seconds, depending on the amount of precipitation, car speed or traffic conditions. Continuous high-speed operation is automatically provided during acceleration. The intermittent feature may be by-passed for the regular two-speed operation.

## TRAILER TOWING PACKAGE

Thunderbird for '72 offers a new heavy-duty trailer towing package for Class III towing (up to 6,000 pounds trailer weight with a maximum tongue load of 700 pounds).

The Heavy-Duty package includes heavy-duty suspension, extra-cooling package, wiring harness, trailer towing decal and high ratio (3.25:1) axle. (See options listing on page

F-18 for component description. See Trailer Towing Warranty Statement on page iii.)



## FRONT AND REAR BUMPER GUARDS

Attractive and functional, Thunderbird's new optional bumper guards help prevent damage in minor collisions. The front guard is a one-piece horizontal rubber strip shaped to the contour of the bumper. The rear guards, heavy chrome plated with rubber inserts, are vertical units positioned on either side of the license plate area.



## DELUXE WHEEL COVERS

All Thunderbirds feature wheel covers as standard equipment. This deluxe wheel cover is offered as optional. Not available with the Glamour Paint Option Group.



# THUNDERBIRD OPTIONS

## DESCRIPTION

## AVAILABILITY\*

### APPEARANCE OPTIONS

	R P O	D L R
Bumper Guards, Front and Rear	X	X
Glamour Paint Option Group (Includes color-keyed wheel covers, body side and hood paint stripes, and tooled silver Landau bar inserts (when vinyl roof is ordered.) Available in Copper Fire, Gold Fire, Lime Fire, Cinnamon Fire, Burgundy Fire, Walnut Fire, Green Fire, Blue Fire.)	X	
Protection Group (Includes color-keyed floor mats, front and rear, license plate frames, door edge guards, and rocker panel moldings.)	X	
Roof, Vinyl (Includes Landau "S" bar with woodgrain insert. Tooled silver "S" bar insert when vinyl roof is ordered in combination with Glamour Paint Option Group.)	X	
Spare Tire Cover	X	
Trim, Luxury Leather (Available only with standard split bench seat.)	X	
Wheel Covers, Deluxe (N/A with Glamour Paint Option Group.)	X	X

### AUDIO EQUIPMENT

	R P O	D L R
Radio, AM (Includes two front door mounted speakers and dual rear seat speakers.)	X	X
Radio, AM/FM Stereo (Includes dual front and rear seat speakers. N/A with AM radio or stereosonic tape system.)	X	
Stereosonic Tape System with AM Radio (Includes dual front and rear seat speakers. N/A with AM/FM stereo radio.)	X	

### COMFORT—CONVENIENCE EQUIPMENT

	R P O	D L R
Air Conditioner—SelectAire (Tinted glass—complete recommended.)	X	
Air Conditioner—SelectAire with Automatic Temperature Control (Tinted glass—complete recommended.)	X	
Belts, Deluxe	X	
Convenience Group, Turnpike (Includes fingertip speed control, manual reclining passenger seat, and trip odometer.)	X	
Cornering Lights, Front	X	
Electric Defrost, Rear Window (Includes indicator light located in the instrument cluster.)	X	
Glass, Tinted—Complete (Recommended with air conditioner.)	X	
Light Group, Convenience (Includes low fuel flasher and door-ajar warning lights, front "lights-on" warning light and buzzer, dual overhead map lights, and engine compartment light.)	X	
Seat Back Release, Automatic	X	
Seat, Manual Reclining Passenger (Standard with turnpike convenience group. Available with conventional or power seats.)	X	
Seats, High Back Bucket and Console	X	

## DESCRIPTION

## AVAILABILITY\*

### COMFORT—CONVENIENCE EQUIPMENT (Cont'd)

	R P O	D L R
Speed Control, Fingertip (Includes rim blow—two-spoke steering wheel. Standard with turnpike convenience group.)		X
Steering Wheel, Rim Blow—Deluxe Three-Spoke (Not available with fingertip speed control.)		X
Steering Wheel, Tilt		X
Sunroof, Power Operated (requires vinyl roof at extra cost.)		X
Windshield Wipers, Intermittent		X

### TRAILER TOWING, SPECIAL AND HEAVY-DUTY EQUIPMENT

	R P O	D L R
Axle, Traction-Lok Differential (Available with standard ratio axle or optional high ratio axle.)		X
Brake Control System, Sure-Track.		X
Emission Control System, NOX Exhaust (Required in state of California, available elsewhere.)		X
Suspension, Heavy-Duty (Includes heavy-duty front and rear springs and heavy-duty front and rear shock absorbers.)		X
Trailer Towing Package, Heavy-Duty (Includes Heavy-Duty suspension (consisting of: heavy-duty springs front and rear, heavy-duty shock absorbers front and rear). Extra cooling package (three rows of cooling tubes in place of the regular two rows to provide additional engine and transmission cooling). Wiring harness (wires to accommodate stop lamps, electric brakes, turn signals, and taillamps. Does not include a hot line for a "water pump" or other electrical appliances) "Trailer Towing" decal and 3.25:1 axle ratio. See Trailer Towing Statement page iii.)		X

### POWER ASSISTS

	R P O	D L R
Power Antenna (Requires AM radio, AM/FM stereo radio, or AM radio/stereosonic tape.)		X
Power Lock Group (Includes power door locks and power trunk lid release.)		X
Power Seats, 6-Way (Available with split-bench or bucket seats. May be ordered on driver's seat only or driver's and passengers' seats.)		X
Power Side Windows		X

### TIRES

	R P O	D L R
215 R15 Michelin steel-belted radial ply single band WSW	X	X

\*RPO—Regular Production Option  
DLR—Dealer Installed Accessory



# THUNDERBIRD OPTIONS

## HIGH-BACK BUCKET SEATS AND CONSOLE

Thunderbird's new high-back bucket seats are trimmed in hopsack cloth, and the door trim panels feature unique hopsack cloth inserts. The option also includes a newly designed center console, which features a built-in tissue dispenser and a storage compartment with padded cover.



## MANUAL RECLINING PASSENGER SEAT

A reclining passenger seat is available with either the high-back bucket seats or the split bench seats and includes a convenient seatside control lever. It is standard with the Turnpike Convenience Group.

## "TRACTION-LOK" DIFFERENTIAL

Ford's "Traction-Lok" differential is designed to lock the rear wheels together in proportion to the driving torque applied. The "Traction-Lok" differential provides extra traction on ice, mud or snow, and maximum accelerating power. (See the Power Teams section for more information.)

## INTERMITTENT WINDSHIELD WIPERS

This new option allows Thunderbird owners to adjust the wiper speed to fit the weather conditions. The wipers can be adjusted to provide a pause between each wiping cycle. The length of the pause may be controlled by the driver from two- to ten-seconds, depending on the amount of precipitation, car speed or traffic conditions. Continuous high-speed operation is automatically provided during acceleration. The intermittent feature may be by-passed for the regular two-speed operation.

## TRAILER TOWING PACKAGE

Thunderbird for '72 offers a new heavy-duty trailer towing package for Class III towing (up to 6,000 pounds trailer weight with a maximum tongue load of 700 pounds).

The Heavy-Duty package includes heavy-duty suspension, extra-cooling package, wiring harness, trailer towing decal and high ratio (3.25:1) axle. (See options listing on page

F-18 for component description. See Trailer Towing Warranty Statement on page iii.)



## FRONT AND REAR BUMPER GUARDS

Attractive and functional, Thunderbird's new optional bumper guards help prevent damage in minor collisions. The front guard is a one-piece horizontal rubber strip shaped to the contour of the bumper. The rear guards, heavy chrome plated with rubber inserts, are vertical units positioned on either side of the license plate area.



## DELUXE WHEEL COVERS

All Thunderbirds feature wheel covers as standard equipment. This deluxe wheel cover is offered as optional. Not available with the Glamour Paint Option Group.



# THUNDERBIRD OPTIONS

## DESCRIPTION

## AVAILABILITY\*

	R P O	D L R
<b>APPEARANCE OPTIONS</b>		
Bumper Guards, Front and Rear	X	X
Glamour Paint Option Group (Includes color-keyed wheel covers, body side and hood paint stripes, and tooled silver Landau bar inserts (when vinyl roof is ordered.) Available in Copper Fire, Gold Fire, Lime Fire, Cinnamon Fire, Burgundy Fire, Walnut Fire, Green Fire, Blue Fire.)	X	
Protection Group (Includes color-keyed floor mats, front and rear, license plate frames, door edge guards, and rocker panel moldings.)	X	
Roof, Vinyl (Includes Landau "S" bar with woodgrain insert. Tooled silver "S" bar insert when vinyl roof is ordered in combination with Glamour Paint Option Group.)	X	
Spare Tire Cover	X	
Trim, Luxury Leather (Available only with standard split bench seat.)	X	
Wheel Covers, Deluxe (N/A with Glamour Paint Option Group.)	X	X
<b>AUDIO EQUIPMENT</b>		
Radio, AM (Includes two front door mounted speakers and dual rear seat speakers.)	X	X
Radio, AM/FM Stereo (Includes dual front and rear seat speakers. N/A with AM radio or stereosonic tape system.)	X	
Stereosonic Tape System with AM Radio (Includes dual front and rear seat speakers. N/A with AM/FM stereo radio.)	X	
<b>COMFORT—CONVENIENCE EQUIPMENT</b>		
Air Conditioner—SelectAire (Tinted glass—complete recommended.)	X	
Air Conditioner—SelectAire with Automatic Temperature Control (Tinted glass—complete recommended.)	X	
Belts, Deluxe	X	
Convenience Group, Turnpike (Includes fingertip speed control, manual reclining passenger seat, and trip odometer.)	X	
Cornering Lights, Front	X	
Electric Defrost, Rear Window (Includes indicator light located in the instrument cluster.)	X	
Glass, Tinted—Complete (Recommended with air conditioner.)	X	
Light Group, Convenience (Includes low fuel flasher and door-ajar warning lights, front "lights-on" warning light and buzzer, dual overhead map lights, and engine compartment light.)	X	
Seat Back Release, Automatic	X	
Seat, Manual Reclining Passenger (Standard with turnpike convenience group. Available with conventional or power seats.)	X	
Seats, High Back Bucket and Console	X	

## DESCRIPTION

## AVAILABILITY\*

	R P O	D L R
<b>COMFORT—CONVENIENCE EQUIPMENT (Cont'd)</b>		
Speed Control, Fingertip (Includes rim blow—two-spoke steering wheel. Standard with turnpike convenience group.)		X
Steering Wheel, Rim Blow—Deluxe Three-Spoke (Not available with fingertip speed control.)		X
Steering Wheel, Tilt		X
Sunroof, Power Operated (requires vinyl roof at extra cost.)		X
Windshield Wipers, Intermittent		X
<b>TRAILER TOWING, SPECIAL AND HEAVY-DUTY EQUIPMENT</b>		
Axle, Traction-Lok Differential (Available with standard ratio axle or optional high ratio axle.)		X
Brake Control System, Sure-Track.		X
Emission Control System, NOX Exhaust (Required in state of California, available elsewhere.)		X
Suspension, Heavy-Duty (Includes heavy-duty front and rear springs and heavy-duty front and rear shock absorbers.)		X
Trailer Towing Package, Heavy-Duty (Includes Heavy-Duty suspension (consisting of: heavy-duty springs front and rear, heavy-duty shock absorbers front and rear). Extra cooling package (three rows of cooling tubes in place of the regular two rows to provide additional engine and transmission cooling). Wiring harness (wires to accommodate stop lamps, electric brakes, turn signals, and taillamps. Does not include a hot line for a "water pump" or other electrical appliances) "Trailer Towing" decal and 3.25:1 axle ratio. See Trailer Towing Statement page iii.)		X
<b>POWER ASSISTS</b>		
Power Antenna (Requires AM radio, AM/FM stereo radio, or AM radio/stereosonic tape.)		X
Power Lock Group (Includes power door locks and power trunk lid release.)		X
Power Seats, 6-Way (Available with split-bench or bucket seats. May be ordered on driver's seat only or driver's and passengers' seats.)		X
Power Side Windows		X
<b>TIRES</b>		
215 R15 Michelin steel-belted radial ply single band WSW	X	X
*RPO—Regular Production Option DLR—Dealer Installed Accessory		



# THUNDERBIRD GENERAL SPECIFICATIONS

## BRAKE SPECIFICATIONS

Type	Power, with Front Discs & Rear Drums
Brake Drum Diameter—Rear	11.03
Brake Rotor Diameter—Front Disc	11.72
Brake Lining Material	Molded Asbestos
Brake Lining Attachment—Rear Drum	Riveted
Brake Lining Attachment—Front Disc	Riveted
Lining Width—Rear Drum	2.25
Lining Width—Front Disc	outboard 6.40 x 1.80 inboard 4.46 x 1.80
Total Lining Area (square-inches)	
Rear Drum—Gross	95.5
Rear Drum—Effective	80.4
Front Disc—Gross	36.1
Front Disc—Effective	34.7
Swept Area—Rear Drum	155.90
Swept Area—Front Disc	232
Parking Brake Type	Foot Application of Rear Service Brakes, Automatic Vacuum Release

## WHEEL SPECIFICATIONS

Type	Stamped Steel, Ventilated Disc with Safety Type Rim
Number of Studs	5
Diameter and Rim Size (inches)	15 x 6.0

## POWER TEAM SELECTIONS

Engine	Cruise-O-matic Transmission	Rear Axle Ratios		
		Std.	Opt.	Traction-Lok
429-CID 4V V-8	Standard	2.75 3.00*	3.25	2.75 3.00* 3.25
429-CID 4V V-8 (With Sure Track Brakes)	Standard	2.80 3.00*	3.00 3.25	2.80 3.00 3.00* 3.25

\*California only.

## STEERING SPECIFICATIONS

Linkage Type	Parallelogram with Cross-Link and Idler Arm
Gear Type	Recirculating Ball and Nut with Integral Power Unit
Overall Steering Ratio	21.7 to 1
Steering Gear Ratio	17 to 1
Steering Wheel Turns (lock-to-lock)	4.0
Turning Diameter (curb-to-curb)	43 ft.
Steering Wheel Diameter (semi-oval)	15.5 x 15.0 inches

## BODY DIMENSIONS

All dimensions in inches unless otherwise noted

	2-Door Hardtop
<b>GENERAL</b>	
Wheelbase	120.4
Tread—Front	63.0
—Rear	62.8
Height—Overall	51.3
Length—Overall	216.0
Width—Overall	79.3
—At center pillar	79.2
<b>FRONT SEAT ROOM</b>	
Head room (effective)	36.9
Maximum leg room to accelerator	42.2
Hip room	60.6
Shoulder room	60.4
Cushion height	11.8
Cushion depth	15.4
Steering wheel to thigh clearance	4.3
<b>REAR SEAT ROOM</b>	
Head room (effective)	36.5
Minimum leg room (effective)	36.4
Hip room	54.3
Shoulder room	59.6
Cushion height	12.1
Cushion depth	15.0
<b>LUGGAGE COMPARTMENT</b>	
Usable luggage capacity (cubic feet)	13.9
<b>GLASS AREA</b>	
Side glass exposed surface area	1134.6
Windshield glass exposed surface area	1158.0
Backlight glass exposed surface area	771.4
Total glass exposed surface area	3064.0
<b>CURB WEIGHT (pounds)</b>	<b>4615</b>



# THUNDERBIRD PERFORMANCE

## POWER TEAM AVAILABILITY

The 1972 Thunderbird features the 429 CID 4V 8-cylinder engine with SelectShift Cruise-O-Matic transmission and a 2.75:1 rear axle ratio as standard equipment. An optional 3.25 axle ratio and "Traction-Lok" differential with 2.75- or 3.25 to 1 ratios are available. (Refer to the Power Teams Section for more information.)

## ENGINES

Thunderbird's standard 429 CID 4V engine has been modified to run on regular grade 91-octane fuel and is equipped with a single exhaust system.

This dependable power plant features high turbulence wedge combustion chambers and stud-mounted rocker arms. The canted valves open into the combustion chambers in the

direction of the gas flow for free-breathing efficiency. Other important features of the engine include hot and cold dual inlet air cleaner, high-capacity fuel filter, lightweight, skirtless cylinder block, and durable cast and coined rocker arms. An air induction system provides a cool air charge to the carburetor improving both engine and emission performance characteristics. (Refer to the Power Teams Section for more information.)

## TRANSMISSION

Ford's famous SelectShift Cruise-O-Matic transmission is standard on all Thunderbirds. This versatile transmission permits the driver to choose his mode of shifting to suit the terrain, road conditions or traffic situations.

(Refer to the Power Teams Section for more information.)

# THUNDERBIRD COLOR AND TRIM

## COLOR AND TRIM SELECTIONS

The charts shown here reflect the many interior and exterior color and trim combinations available for 1972, including Thunderbird's exclusive hand-polished glamour paints. The exterior colors and codes are in the first chart and the interior trim combinations follow. All color names and codes referenced are the same as those shown in the 1972 Ford Color and Upholstery Book.

EXTERIOR COLORS AND CODES			
COLOR	CODE	COLOR	CODE
Light Gray Metallic	1A	Light Yellow Gold	6B
Black	1C	Yellow	6D
Maroon	2J	Gray Gold Metallic	6J
Light Blue	3B	White	9A
Medium Blue Metallic	3D	Blue Fire*	3C
Dark Blue Metallic	3H	Green Fire*	4D
Pastel Lime	4A	Walnut Fire*	5C
Bright Green Gold Metallic	4B	Gold Fire*	6G
Medium Green Metallic	4P	Copper Fire*	5G
Dark Green Metallic	4Q	Lime Fire*	4G
Dark Brown Metallic	5F	Cinnamon Fire*	5D
		Burgundy Fire*	2G

\*Glamour Paint Option Group—Includes glamour paint, color-keyed wheel covers, dual bodyside and hood paint stripes, and tooled silver Landau "S" bar insert when vinyl roof is ordered.

SPLIT-BENCH SEAT			
CLOTH AND VINYL—STANDARD			
Interior Trims		Exterior Color Availability Codes	
Color	Code		
Black	HA	All	
Dark Blue	HB	1C 9A 3H 3D 3B 3C 1A	
Dark Red	HD	1C 9A 2J 1A 2G	
Dark Green	HR	1C 9A 4Q 4P 4B 4A 6D 6J 4D 4G	
Tobacco	HZ	1C 9A 4A 5F 6B 6D 5C 5G 6G 5D	

SPLIT-BENCH SEAT			
LEATHER AND VINYL OPTION			
Interior Trims		Exterior Color Availability Codes	
Color	Code		
Black	KA	All	
Dark Blue	KB	1C 9A 1A 3H 3D 3B 3C	
Dark Red	KD	1C 9A 2J 1A 2G	
Ginger	KF	1C 9A 4A 5F 6B 6D 5C 6G 5D	
Dark Green	KR	1C 9A 4Q 4P 4B 4A 6D 6J 4D 4G	
Tobacco	KZ	1C 9A 4A 5F 6B 6D 5C 6G 5G 5D	

SPLIT-BENCH SEAT*		
LEATHER AND VINYL OPTION		
White/Black	KW	1C 9A 1A 6G 2G 2J 6J
White/Blue	KL	3H 3D 3B 3C
White/Green	K5	4Q 4P 4B 4A 4D 4G
White/Tobacco	K9	5F 6B 6D 5C 5G 5D

\*Interior components will be color coordinated with exterior body color when white trim is ordered.

HI-BACK BUCKET SEATS			
CLOTH AND VINYL OPTION			
Interior Trims		Exterior Color Availability Codes	
Color	Code		
Black	GA	All	
Dark Blue	GB	1C 9A 3H 3D 3B 3C 1A	
Dark Red	GD	1C 9A 2J 1A 2G	
Ginger	GF	1C 9A 4A 5F 6B 6D 5C 6G 5D	
Dark Green	GR	1C 9A 4Q 4P 4B 4A 6D 6J 4D 4G	

VINYL ROOFS			
OPTIONS*			
Roof Color	Code	Exterior Color	Interior Trim
Black	1	All	All
White	2	All	All
Blue	3	1A 3H 3D 3B 3C 9A	Dark Blue or White**
	3	3H 3D 3B 3C	Black or White
Green	5	9A 4P 4Q 4B 4A	Dark Green or White**
	5	4D 4G 6J	
Brown	7	4Q 4P 4B 4A 4D 4G	Black or White
	7	9A 4A 5C 5F 6B 6D	Ginger or Tobacco
	7	6G	
	7	5G	Tobacco
	7	5F 5C 5D	Black
	7	5F 5C 5G 5D 9A 6B 6D	White

\*Includes Landau "S" bar with woodtone insert.

\*\*With White exterior.

"DUAL" PAINT STRIPES*		
Exterior Colors	Code	Dual Paint Stripe
Blue Fire	3C	Silver
Green Fire	4D	Lime
Walnut Fire	5C	Yellow
Gold Fire	6G	Black
		(w/Black or White interior)
		Brown
		(w/Ginger or Tobacco interior)
Copper Fire	5G	Dark Brown
Burgundy Fire	2G	Silver
Lime Fire	4G	Lime
Cinnamon Fire	5D	Yellow

\*Available only with Glamour Paint Option Group.



# THUNDERBIRD COLOR AND TRIM GUIDE

## EXTERIOR COLORS



1A Lt. Gray Met.



1C Black



2J Maroon



3B Lt. Blue



3D Med. Blue Met.



3H Dk. Blue Met.



4A Pastel Lime



4B Brt. Green Gold Met.



4P Med. Green Met.



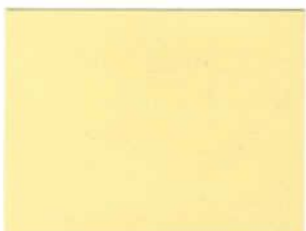
4Q Dk. Green Met.



5F Dk. Brown Met.



6B Lt. Yellow Gold



6D Yellow



6J Gray Gold Met.



9A White



2G Burgundy Fire  
(RPO)



3C Blue Fire  
(RPO)



4D Green Fire  
(RPO)



4G Lime Fire  
(RPO)



5C Walnut Fire  
(RPO)



5D Cinnamon Fire  
(RPO)



5G Copper Fire  
(RPO)



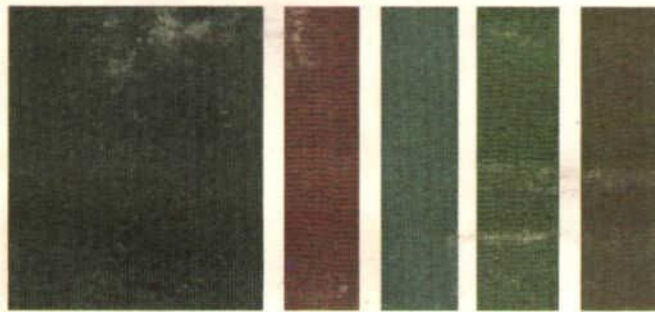
6G Gold Fire  
(RPO)



# THUNDERBIRD COLOR AND TRIM GUIDE

## INTERIORS

### CLOTH & VINYL (STD.) 2 Dr. H/Top



Black

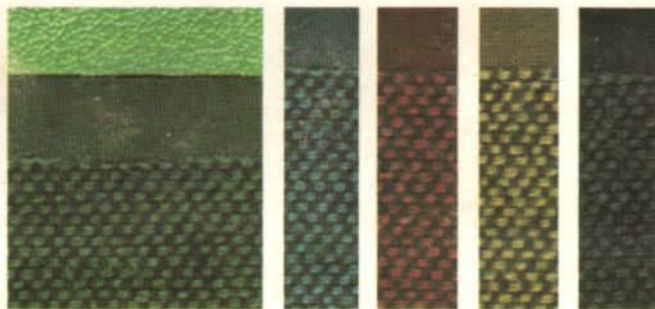
Dk. Red

Dk. Blue

Dk. Green

Tobacco

### CLOTH & VINYL (OPT.) 2 Dr. H/Top



Dk. Green

Dk. Blue

Dk. Red

Ginger

Black

### LEATHER & VINYL (OPT.) 2 Dr. H/Top



Ginger

Dk. Blue

Dk. Red

Black

Dk. Green

Tobacco

Also available in White w/Black, White w/Blue, White w/Green, White w/Tobacco —Not Illustrated.