

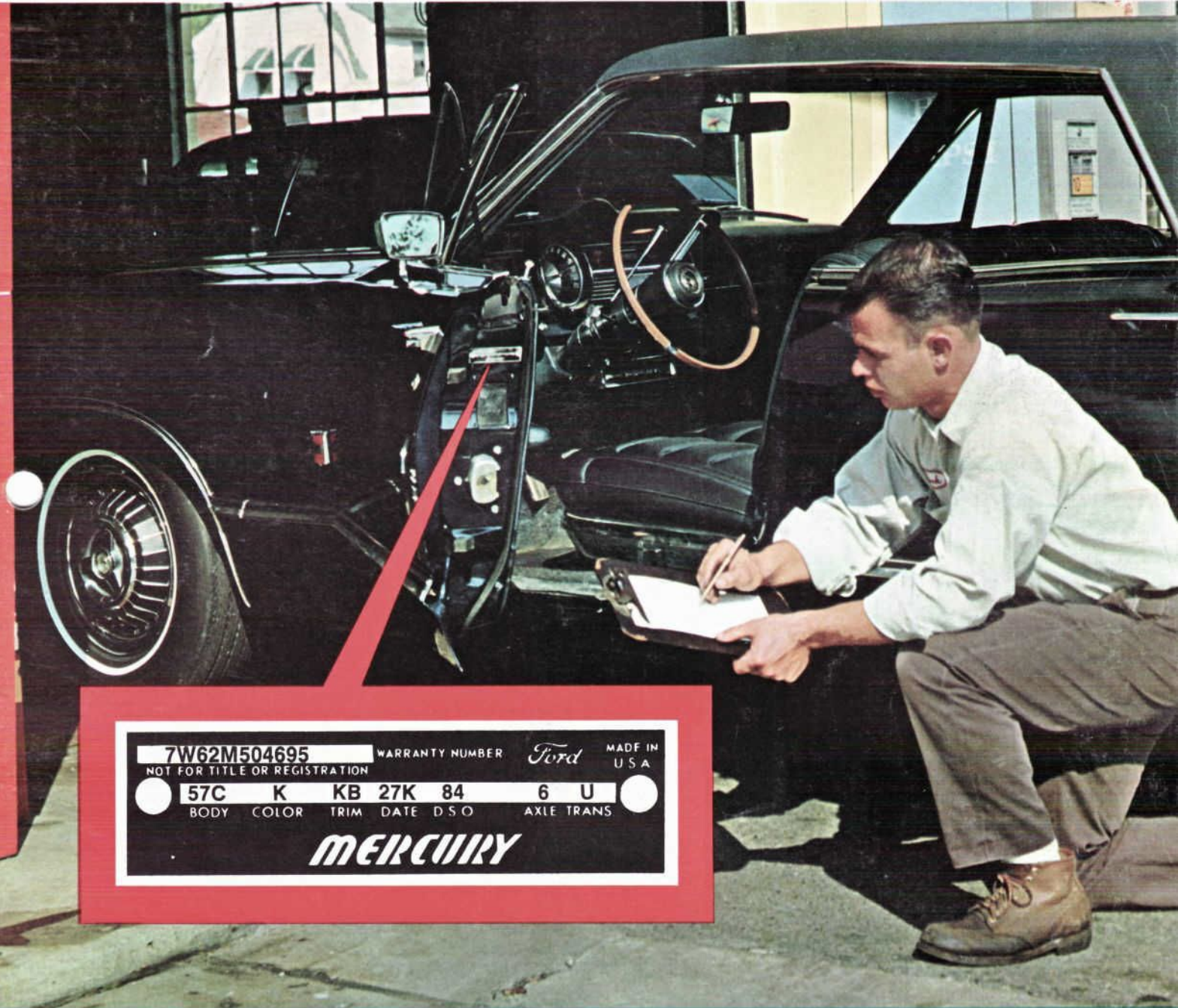
# SHOP TIPS

VOL. 6, NO. 3

NOVEMBER 1967

FROM

**Autolite**



<b>7W62M504695</b>		WARRANTY NUMBER	<i>Ford</i>	MADE IN USA
NOT FOR TITLE OR REGISTRATION				
57C	K	KB	27K 84	6 U
BODY	COLOR	TRIM	DATE DSO	AXLE TRANS
<b>MERCURY</b>				

Technical parts and service information published by the Autolite-Ford Parts Division and distributed by Ford and Lincoln-Mercury dealers to assist servicemen in Service Stations, Independent Garages and Fleets.

**Your Guide to Parts Identification . . .  
How to Read the Warranty Plate on  
1961-68 Ford Motor Company Vehicles**

(See pages 2 thru 15)



	Page
1961-1968 Ford Vehicle Identification.....	2
1968 Ford & L-M Car Identification Plate... 3	3
1967 Ford & L-M Car Identification Plate... 4	4
1966 Ford & L-M Car Identification Plate... 5	5
1965 Ford & L-M Car Identification Plate... 6	6
1963-64 Ford & L-M Car Identification Plate 7	7
1961-62 Ford & L-M Car Identification Plate 8	8
1966-67 Bronco Identification Plate..... 9	9
1968 Falcon Club Wagon and Econoline Identification Plate.....10	10
1966-67 Falcon Club Wagon and Econoline Identification Plate.....10	10
1963-64-65 Falcon Club Wagon and Econoline Identification Plate..... 11	11
1961-62 Falcon Club Wagon and Econoline Identification Plate..... 11	11
1961-68 Ford Truck Identification Plate... 12	12
Ford Truck Identification System..... 12	12
1961-68 Truck Engine Codes (Gas)..... 13	13
1961-68 Truck Engine Codes (Diesel)..... 13	13
1961-68 Truck Transmission Codes..... 14	14
Truck Rear Axle Identification..... 15	15
Autolite Spark Plugs..... 16	16

Be sure and file this and future bulletins for ready reference. If you have any suggestions for additional information that you would like to see included in this publication, please write to: Autolite-Ford Parts Division of Ford Motor Company, Ford Products Merchandising Dept., P.O. Box 3000, Livonia, Michigan 48151.

The description and specifications contained in this book were in effect at the time the publication was approved for printing. The Ford Motor Company, whose policy is one of continuous improvement, reserves the right to discontinue models at any time, or to change specifications or design without notice and without incurring obligation.



COPYRIGHT © 1967 FORD MOTOR COMPANY  
DEARBORN, MICHIGAN

VOL. 68 FPM 25

LITHO IN U.S.A.

# 1961-1968

## FORD VEHICLE IDENTIFICATION

As an aid to all service personnel in identifying models and components, this issue of Shop Tips explains how to read the vehicle identification plates for all Ford-built cars and trucks from 1961 thru 1968.

The identification plate is coded to describe information such as: Model Year, Body Type, Interior Trim, Exterior Paint Color, Transmission Type, Rear Axle Ratio, Engine and Carburetor Type.

The identification plate is located as follows:

### Passenger Cars, Falcon Club Wagons, Econolines

Located on the lock-face of the left front door, or on the left front body pillar.

### Trucks

Located on the lock-face of the left front door, or the upper cowl panel in the engine compartment, or inner side of glove box door, or right hand side of radiator support.

### Bronco

Located on the inside panel of the glove box door.

The identification plate is either *grey* or *black* and identifies the paint finish as follows:

### FOR THE YEARS 1963-64-65

*Black* plate identifies a vehicle painted with Non-Acrylic Enamel

*Grey* plate identifies a vehicle painted with Acrylic Enamel

### FOR THE YEARS 1966-67-68

*Black* plate identifies a vehicle painted with Acrylic Enamel

*Grey* plate identifies a vehicle painted with Non-Acrylic Enamel

Note: All Lincoln Continental plates are gold and only Acrylic Enamel is used on this car line.

### D.S.O. CODES (Special Equipment)

Many vehicles such as police cars, taxis and trucks have special equipment installed. Special equipment is identified by a D.S.O. code. D.S.O. codes have been stamped into truck plates since 1957 and passenger cars since 1962. In addition, all vehicles with special equipment delivered since January 1962 have a blue envelope in the glove box containing a copy of the Special Equipment Parts List used on that particular vehicle. The selling dealer also has a similar yellow copy.

A typical D.S.O. number might be 11-0645. The 11 indicates the district (in this case Boston) in which the vehicle was delivered, and the 0645 means it was the 645th vehicle with special equipment delivered for the year. NOTE: On some plates, you may find a D.S.O. number such as 11-, without a second set of numbers. This is NOT a vehicle with special equipment. The number (11) refers only to the District (Boston) in which the vehicle was delivered.

To order special equipment for vehicles delivered after January 1962, simply use the D.S.O. parts lists in the glove box. If the parts list is not available, then use the D.S.O. code on the identification plate. If neither is available, give your Ford or Lincoln-Mercury parts man any information stamped or stenciled on the part. He can then correctly deliver the part you need.

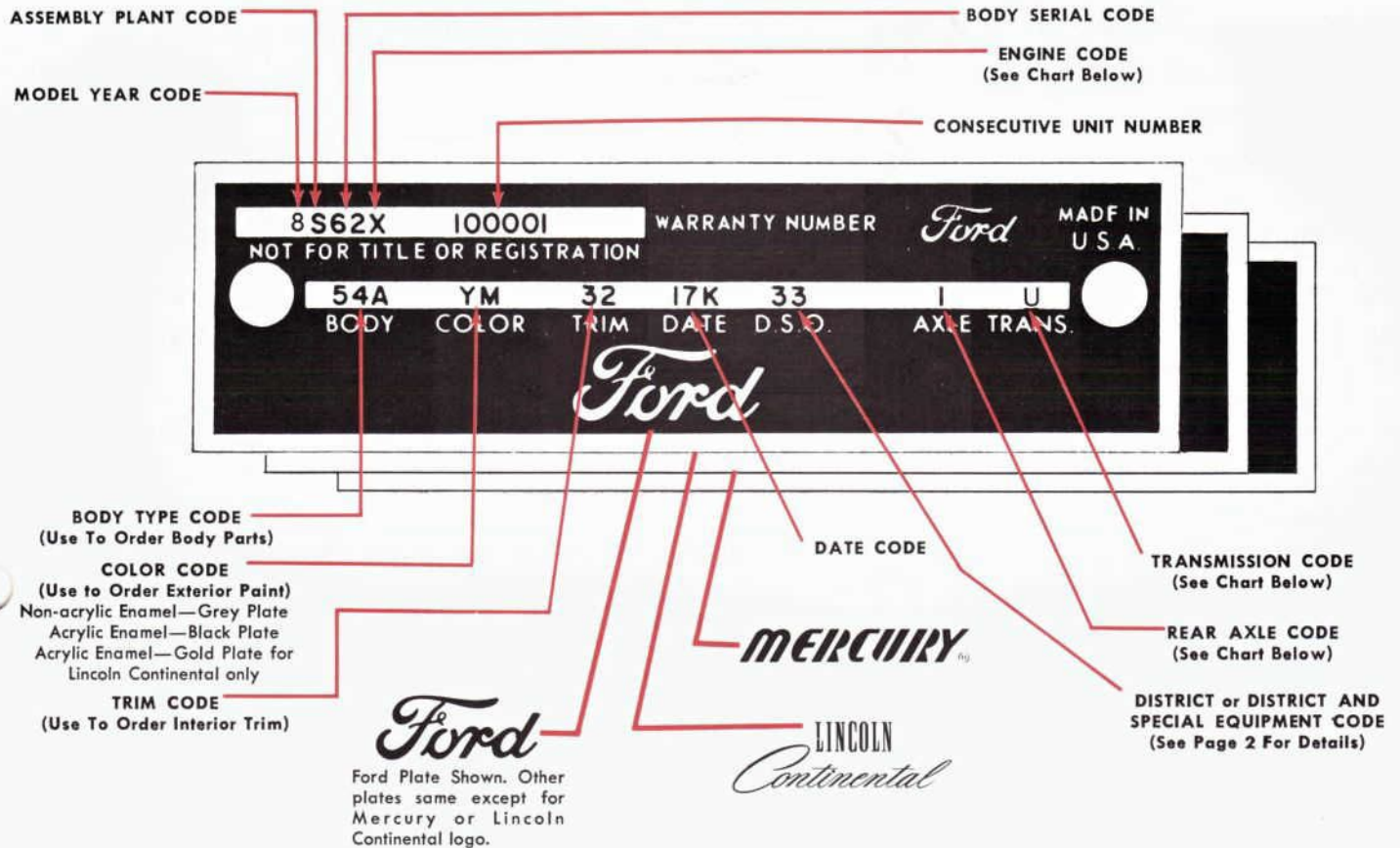
Heavy and extra heavy duty trucks built at the Louisville assembly plant since August 14, 1967 have a Truck Specification List in the glove box. It identifies the 37 major components used on the truck by part number. Special Order parts are identified by a (✓) or (X), and likewise can be ordered directly from your Ford Dealer.



# 1968

## FORD and LINCOLN-MERCURY CAR IDENTIFICATION PLATES

- FORD • FAIRLANE • FALCON • THUNDERBIRD
- MUSTANG • RANCHERO • MERCURY
- COUGAR • MONTEGO • LINCOLN-CONTINENTAL



### ENGINES CODES

CODE	CYL.	CID	CARB. VENTURI
A	8	289	4V (Prem. Fuel)
B	6	240*	1V (Police)
C	8	289*	2V
E	6	240*	1V (Taxi)
F	8	302	2V
G	8	462†	4V (Lin.-Cont.)
H	8	390*	2V Auto. Trans.
J	8	302	4V
K	8	289*	4V (Special)
N	8	429*	4V
P	8	428	4V (Police)
Q	8	428	4V
R	8	427	8V (Hi-Perf.)
S	8	390	4V (GT)
T	6	200	1V
U	6	170*	1V
V	6	240*	1V
W	8	427	4V (Hi-Perf.)
X	8	390†	2V (Prem. Fuel)
Y	8	390	2V (3-Spd. Man.)
Z	8	390	4V

\*Ford Only  
†L-M Only

### TRANSMISSION CODES

CODE	TRANSMISSION TYPE
1	3 Speed Manual Shift
5	4 Speed Manual Shift
U	C6 Automatic (XPL)
W	C4 Automatic (XP3)
X	Cruise-O-Matic (FMX)*
Y	Cruise-O-Matic (MX)*
Z	C6 Automatic Special (XPL)

\*Ford Only

### REAR AXLE RATIO CODES

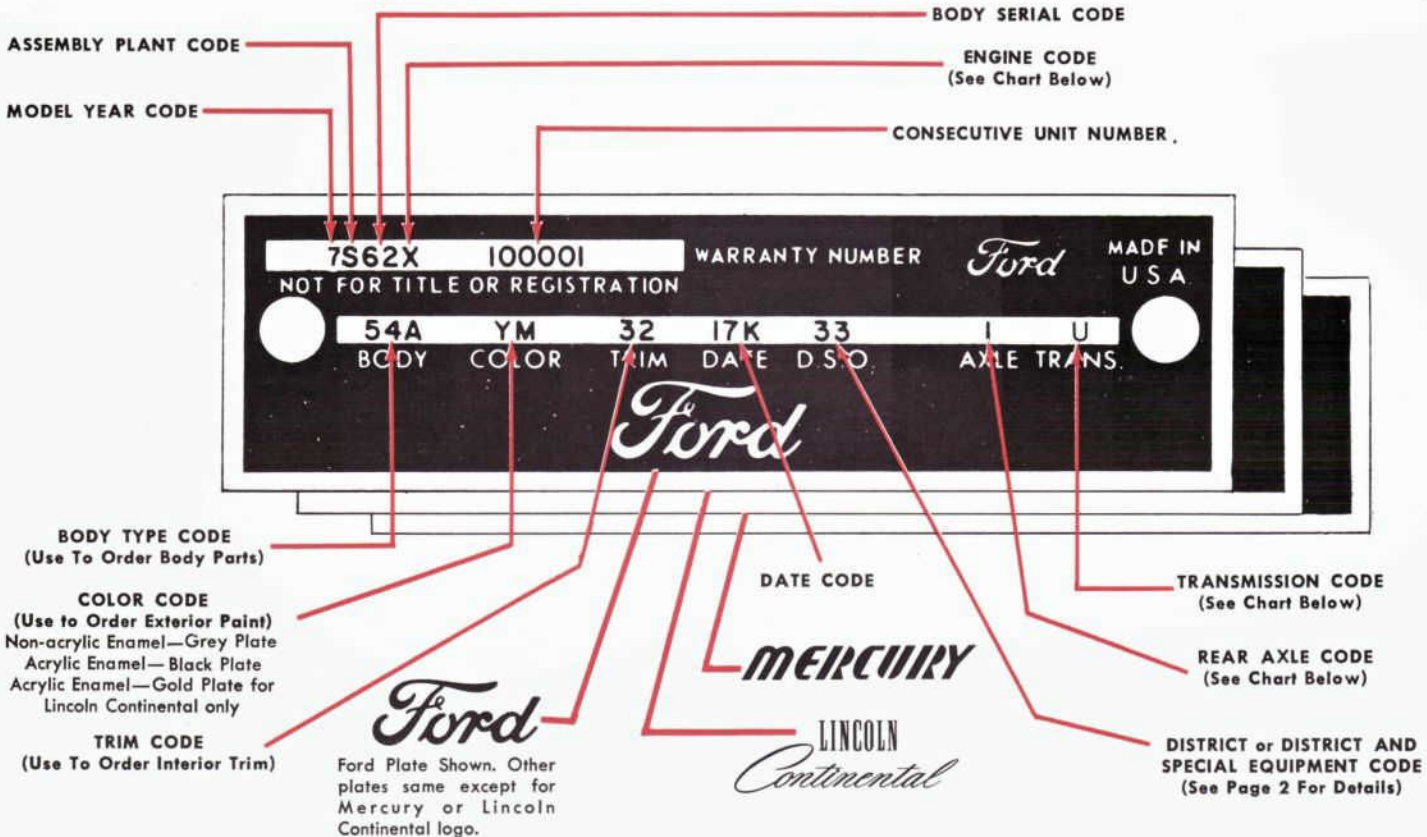
REGULAR	RATIO	LOCKING
0	2.50:1	—
1	2.75:1	A
2	2.79:1	B
3	2.80:1	C
4	2.83:1	D
5	3.00:1	E
6	3.20:1	F
7	3.25:1	G
8	3.50:1	H
9	3.10:1 (L-M Only)	—



# 1967

## FORD and LINCOLN-MERCURY CAR IDENTIFICATION PLATES

- FORD • FAIRLANE • FALCON • THUNDERBIRD • MUSTANG
- RANCHERO • MERCURY • LINCOLN-CONTINENTAL
- COUGAR • MERCURY INTERMEDIATE



ENGINE CODES			
CODE	CYL.	CID	CARB. VENTURI
A	8	289	4V (Prem. Fuel)
B	6	240*	1V (Police)
C	8	289	2V
D	8	427*	8V (Hi-Perf. SOHC)
E	6	240*	1V (Taxi)
G	8	462	4V (Lin.-Cont.)
H	8	390	2V (Auto. Trans.)
K	8	289	4V (Hi-Perf.)
L	8	427*	4V (Hi-Perf. SOHC)
P	8	428	4V (Police)
Q	8	428	4V
R	8	427	8V (Hi-Perf.)
S	8	390	4V (GT)
T	6	200	1V
U	6	170*	1V
V	6	240*	1V
W	8	427	4V (Hi-Perf.)
X	8	390†	2V (Prem. Fuel)
Y	8	390	2V (3 Spd. Man.)
Z	8	390*	4V

\*Ford Only  
†L-M Only

TRANSMISSION CODES	
CODE	TRANSMISSION TYPE
1	3 Speed Manual Shift (2.77)
2	Overdrive*
3	3 Speed Manual Shift (3.03)*
5	4 Speed Manual Shift
U	C6 Automatic (XPL)
W	C4 Automatic (XP)
X	Cruise-O-Matic (FX)*
Y	Cruise-O-Matic (MX)
Z	C6 Automatic Special (XPL)

\*Ford Only

REAR AXLE CODES		
REGULAR	RATIO	LOCKING
0	2.79:1**	—
0	3.10:1	—
1	3.00:1	A
2	2.83:1	B
3	3.20:1	C
4	3.25:1	D
5	3.50:1	E
6	2.80:1	F
7	3.36:1*	G
7	3.89:1†	—
8	2.75:1	H
9	4.11:1	I
—	2.89:1†	4

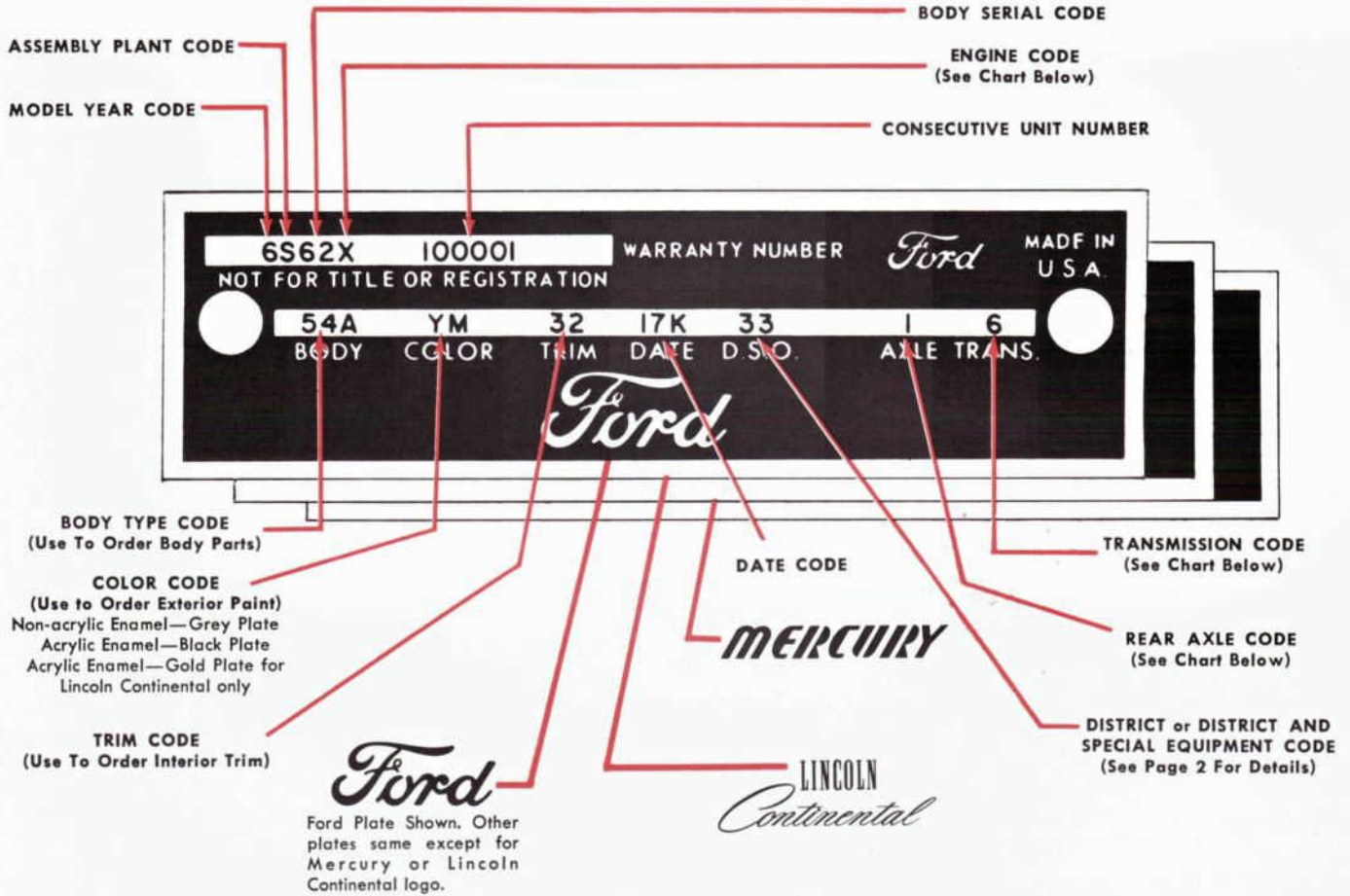
\*Ford Only †L-M Only \*\*Fairlane, Falcon, Mustang



# 1966

## FORD and LINCOLN-MERCURY CAR IDENTIFICATION PLATES

- FORD • FAIRLANE • FALCON • THUNDERBIRD • MUSTANG
- RANCHERO • MERCURY • COMET • LINCOLN-CONTINENTAL



Ford Plate Shown. Other plates same except for Mercury or Lincoln Continental logo.

### ENGINE CODES

CODE	CYL.	CID	CARB. VENTURI
A	8	289*	4V (Prem. Fuel)
B	6	240*	1V (Police)
C	8	289	2V
E	6	240*	1V (Taxi)
G	8	462†	4V (Lin.-Cont.)
H	8	390	2V (Auto. Trans.)
K	8	289*	4V (Hi-Perf.)
M	8	410†	4V
P	8	428	4V (Police)
Q	8	428	4V
R	8	427	8V (Hi-Perf.)
S	8	390	4V (GT)
T	6	200	1V
U	6	170*	1V
V	6	240*	1V
W	8	427	4V (Hi-Perf.)
X	8	352*	4V (Power Opt.)
Y	8	390	2V
Z	8	390	4V

\*Ford Only †L-M Only

### TRANSMISSION CODES

CODE	TRANSMISSION TYPE
1	3 Speed Manual Shift (2.77)
2	Overdrive*
3	3 Speed Manual Shift (3.03)*
4	C6 Automatic (XPL)
5	4 Speed Manual Shift
6	C4 Automatic (XP)
7	Cruise-O-Matic (FX)*
8	Cruise-O-Matic (MX)

\*Ford Only

### REAR AXLE CODES

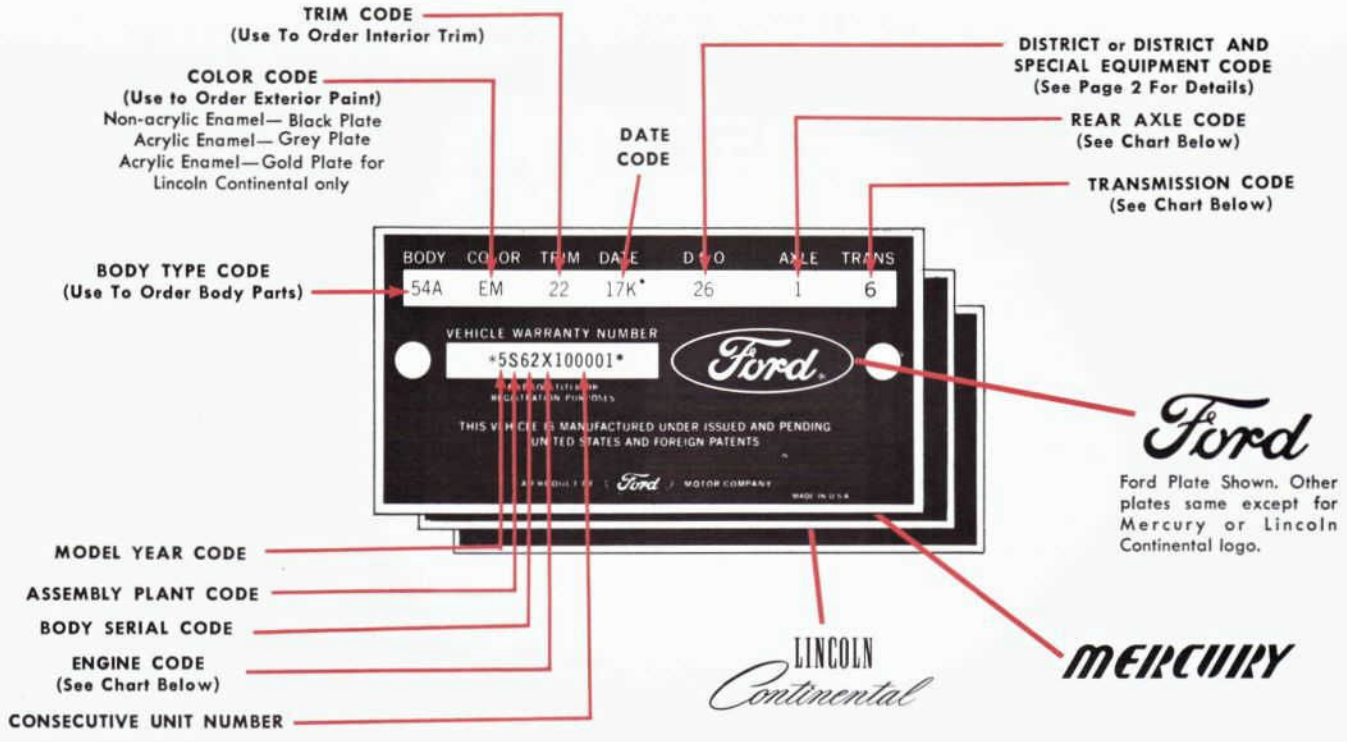
REGULAR	RATIO	LOCKING
0	3.10:1†	—
1	3.00:1	A
2	2.83:1	B
3	3.20:1	C
4	3.25:1	D
5	3.50:1	E
6	2.80:1	F
7	3.89:1†	—
8	3.89:1*	H
8	2.75:1†	I
9	4.11:1	H
—	2.89:1†	4

\*Ford Only †L-M Only

# 1965

## FORD and LINCOLN-MERCURY CAR IDENTIFICATION PLATES

- FORD • FAIRLANE • FALCON • THUNDERBIRD • MUSTANG
- RANCHERO • MERCURY • COMET • LINCOLN-CONTINENTAL



ENGINE CODES			
CODE	CYL.	CID	CARB. VENTURI
A	8	289	4V (Prem. Fuel)
B	6	240*	1V (Police)
C	8	289	2V
D	8	289*	4V (Reg. Fuel)
D	8	289†	2V (Special)
E	6	240*	1V (Taxi)
F	8	260*	2V
H	8	390†	2V (Special)
K	8	289*	4V (Hi-Perf.)
N	8	430†	4V (Lin.-Cont.)
P	8	390	4V (Police)
R	8	427	8V (Hi-Perf.)
T	6	200	1V
U	6	170*	1V
V	6	240*	1V
X	8	352*	4V (Power Opt.)
Y	8	390†	2V
Z	8	390	4V

\*Ford Only †L-M Only

TRANSMISSION CODES	
CODE	TRANSMISSION TYPE
1	3 Speed Manual Shift
2	Overdrive
4	Cruise-O-Matic*
5	4 Speed Manual Shift
6	C4 Dual Range Automatic (XP)
8	Merc-O-Matic (MX)†

\*Ford Only †L-M Only

REAR AXLE CODES		
REGULAR	RATIO	LOCKING
0	3.10:1†	—
1	3.00:1	A
2	2.83:1	B
2	3.10:1*	B
3	3.20:1	C
4	3.25:1	D
5	3.50:1	E
6	2.80:1	F
7	3.80:1*	G
7	3.89:1†	H
8	3.89:1*	H
9	4.00:1 (Falcon)	I
9	4.11:1	I
—	2.89:1†	4
—	3.11:1† (Lincoln)	5

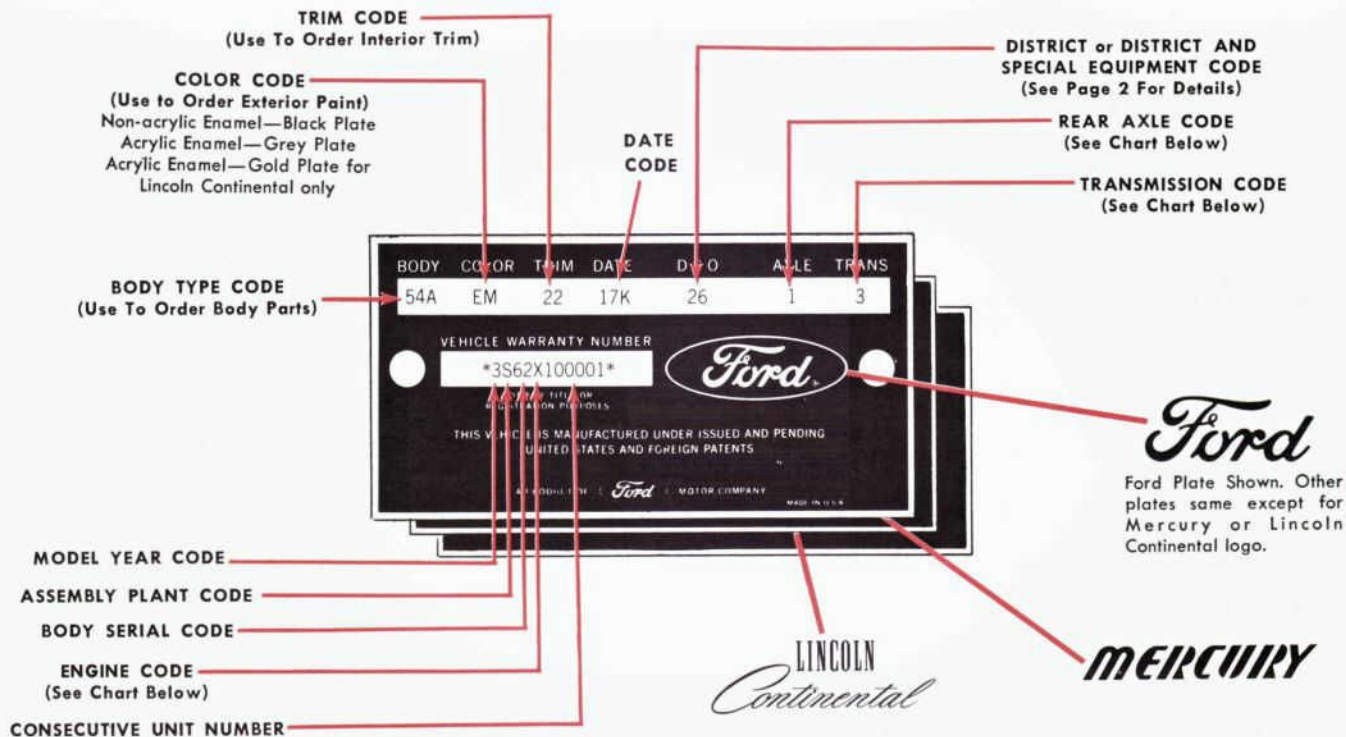
\*Ford Only †L-M Only



# 1963-64

## FORD and LINCOLN-MERCURY CAR IDENTIFICATION PLATES

- FORD • FAIRLANE • FALCON • THUNDERBIRD
- RANCHERO • MERCURY • COMET • LINCOLN-CONTINENTAL



ENGINE CODES			
CODE	CYL.	CID	CARB. VENTURI
B	8	406	4V (Hi-Perf.) 1963
B	6	223*	1V (Police) 1964
C	8	289*	2V
D	8	289	4V (Special)
E	6	223*	1V (Taxi)
F	8	260	2V
G	8	406	6V (Special) 1963
H	8	390†	2V (Special)
K	8	289	4V (Hi-Perf.)
L	8	221*	2V (1963)
L	8	221†	2-4V (Special)
M	8	390*	6V (Special)
M	8	396†	4V ('64)
N	8	430†	4V (Lin.-Cont.)
P	8	390	4V (Police)
Q	8	427	4V (Hi-Perf.)
R	8	427	8V (Hi-Perf.)
S	6	144	1V
T	6	200	1V
U	6	170	1V
V	6	223*	1V
X	8	352*	4V (Power Opt.)
Y	8	390†	2V (Reg. Fuel)
Z	8	390	4V

\*Ford Only †L-M Only

TRANSMISSION CODES	
CODE	TRANSMISSION TYPE
1	3 Speed Manual
2	Overdrive
3	Fordomatic 2 Speed*
3	Automatic 2 Speed†
4	Cruise-O-Matic*
4	Automatic Dual Range†
5	4 Speed Manual
6	C4 Dual Range Automatic* (1964)
6	Automatic 3 Speed Dual Range†

\*Ford Only †L-M Only

REAR AXLE CODES		
REGULAR	RATIO	LOCKING
1	2.89:1† (Lincoln)	A
1	3.00:1	A
2	3.10:1	B
3	3.11:1† (Lincoln)	C
3	3.20:1	C
4	3.25:1	D
5	3.50:1	E
6	2.80:1	F
7	3.80:1	G
8	3.89:1	H
9	4.00:1 (Fal. & Comet)	I
9	4.11:1	I

\*Ford Only †L-M Only



# 1961-62

## FORD and LINCOLN-MERCURY CAR IDENTIFICATION PLATES

- FORD • FAIRLANE • FALCON • THUNDERBIRD • RANCHERO
- MERCURY • COMET • METEOR • LINCOLN-CONTINENTAL

TRIM CODE  
(Use To Order Interior Trim)

COLOR CODE  
(Use To Order Exterior Paint)

BODY TYPE CODE  
(Use To Order Body Parts)

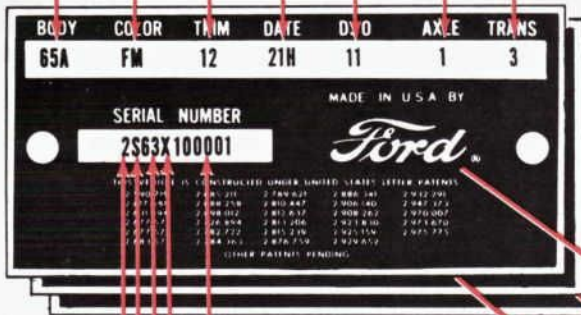
DATE CODE

DISTRICT or DISTRICT AND SPECIAL EQUIPMENT CODE  
(See Page 2 For Details)

REAR AXLE CODE  
(See Chart Below)

TRANSMISSION CODE  
(See Chart Below)

1962



1961



MODEL YEAR CODE

CONSECUTIVE UNIT NUMBER

ASSEMBLY PLANT CODE

BODY SERIAL CODE ENGINE CODE  
(See Chart Below)

LINCOLN  
*Continental*

*Ford*  
Ford Plate Shown. Other plates same except for Mercury or Lincoln Continental logo.

*MERCURY*

### ENGINE CODES

CODE	CYL.	CID	CARB. VENTURI
B	8	406	4V (Hi-Perf.)
F 62	8	260	2V
G	8	406	6V (Special)
H	8	430†	2V (Lin.-Cont.)
L 62	8	221	2V
M	8	390*	6V (Special)
P	8	390	4V (Police)
Q	8	390*	4V (Special)
S	6	144	1V
U	6	170	1V
V	6	223	1V
W	8	292	2V
X	8	352	2V (Special)
Z	8	390	4V
Z 61	8	390*	6V (Special)

\*Ford Only  
†L-M Only

### TRANSMISSION CODES

CODE	TRANSMISSION TYPE
1	3 Speed Manual
2	Overdrive
3	Fordomatic 2 Speed*
3	Automatic 2 Speed†
4	Cruise-O-Matic*
4	Dual Range Automatic†
5	4 Speed Manual
C	Single Range Automatic†

\*Ford Only †L-M Only

### 1961 REAR AXLE CODES

REGULAR	RATIO	LOCKING
1	3.56:1	A
2	3.89:1	B
3	3.10:1	C
4	4.00:1	—
5	3.20:1	—
6	3.00:1	F
7	2.89:1	G
8	2.91:1*	H
8	2.91:1†	—
J	3.50:1	—

\*Ford Only  
†L-M Only

### 1962 REAR AXLE CODES

REGULAR	RATIO	LOCKING
1	2.89:1	A
	(Lincoln)	
1	3.00:1	A
2	3.10:1	B
3	3.20:1	C
4	3.25:1	D
5	3.50:1*	E
5	3.50:1†	—
6	3.56:1*	F
6	3.56:1†	B
7	3.80:1*	G
7	3.80:1†	—
8	3.89:1*	H
8	3.89:1†	F
9	4.00:1(Fal.)	—
9	4.11:1	—



# 1966-68 BRONCO IDENTIFICATION PLATES

• ROADSTER • WAGON • SPORTS UTILITY



**ENGINE CODE**  
(See Chart Below)

**ASSEMBLY PLANT CODE**

**VEHICLE—SERIES CODE**

**WHEELBASE (inches)**

**CONSECUTIVE UNIT NUMBER**  
66 MODELS—Begin with 732,000  
67 MODELS—Begin with A00,000

**REAR AXLE CODE**  
(See Chart Below)

U15 F L 732000 WARRANTY NUMBER *Ford* MADE IN U.S.A.

W.B. COLOR MODEL BODY TRANS AXLE

92 J U150 198 C 05

MAX. G.V.W. LBS. CERT. NET H.P. R.P.M. D.S.O.

72

WARRANTY VOID IF MAX. GROSS VEHICLE WEIGHT IS EXCEEDED  
(SEE OPERATOR'S MANUAL OR LOAD CAPACITY CHART)



## 1966-67

**COLOR CODE**  
(Use to Order Exterior Paint)  
Non-acrylic Enamel—Grey Plate  
Acrylic Enamel—Black Plate

**MODEL CODE**

**TRIM CODE**  
(Use To Order Interior Trim)

**BODY TYPE CODE**  
(Use To Order Body Parts)

**3-SPEED MANUAL**  
(Only Transmission Available)

**DISTRICT or DISTRICT AND SPECIAL EQUIPMENT CODE**  
(See Page 2 For Details)

## 1968

SEE OPERATOR'S MANUAL FOR EQUIP. REQ'D FOR MAX. GVW & LOAD CAPACITIES. REQ'D FOR MAX. GVW & LOAD CAPACITIES. WARRANTY VOID IF LOAD CAPACITY EXCEEDED. *Ford* MADE IN U.S.A.

U15FLC 42000

WARRANTY NO. ADEQUATE TIRES REQ'D FOR AXLE LOADINGS

W.B. COLOR MODEL BODY TRANS AXLE

92 J U150 19 8 C 05

MAX. G.V.W. LBS. CERT. NET H.P. R.P.M. D.S.O.

72

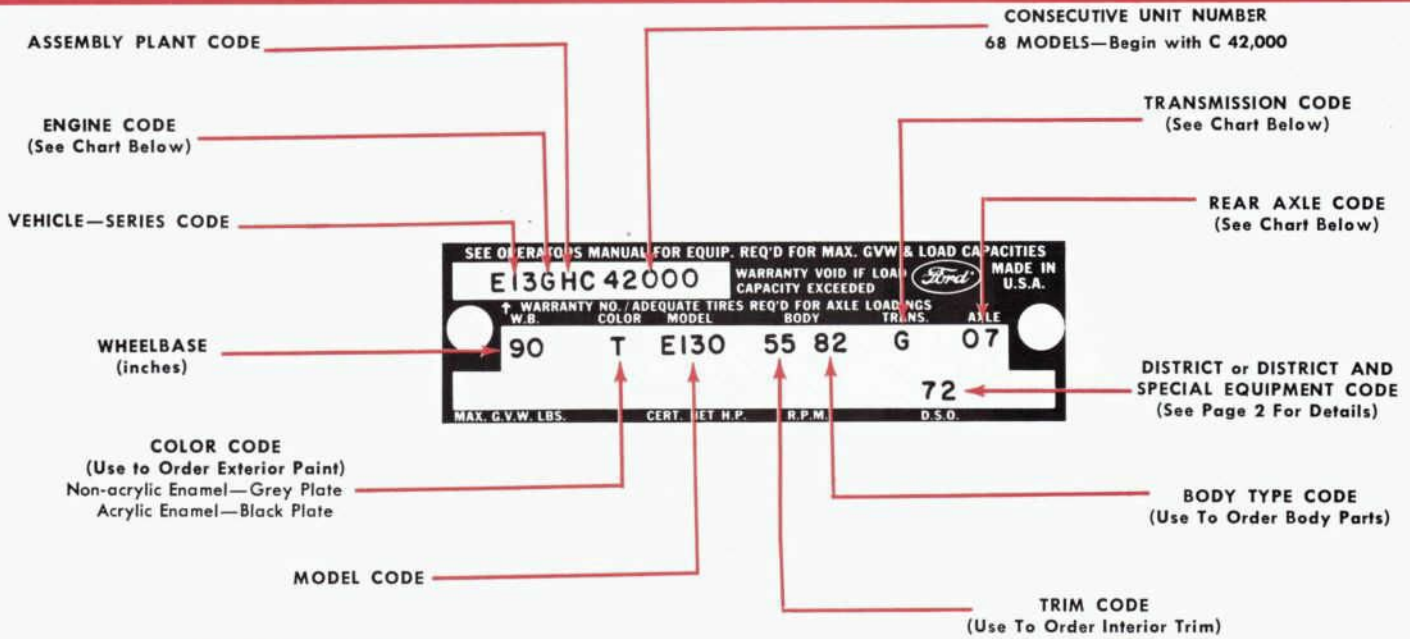


ENGINE CODES			
CODE	CYL.	C I D	CARB. VENTURI
F	6	170	1V
N	8	289	2V

REAR AXLE CODES						
REGULAR			RATIO	RATING	LOCKING	
66	67	68			66	67 68
03	03	03	4.11:1	2780 lb.	A3	A3 A3
04	04	04	4.57:1	2780 lb.	A4	A4 A4
—	18	18	3.50:1	2780 lb.	—	B8 B8
05	05	05	4.11:1	3300 lb.	A5	A5 A5
06	06	06	4.57:1	3300 lb.	A6	A6 A6
—	19	19	3.50:1	3300 lb.	—	B9 B9



# 1968 FALCON CLUB WAGON & ECONOLINE IDENTIFICATION PLATES



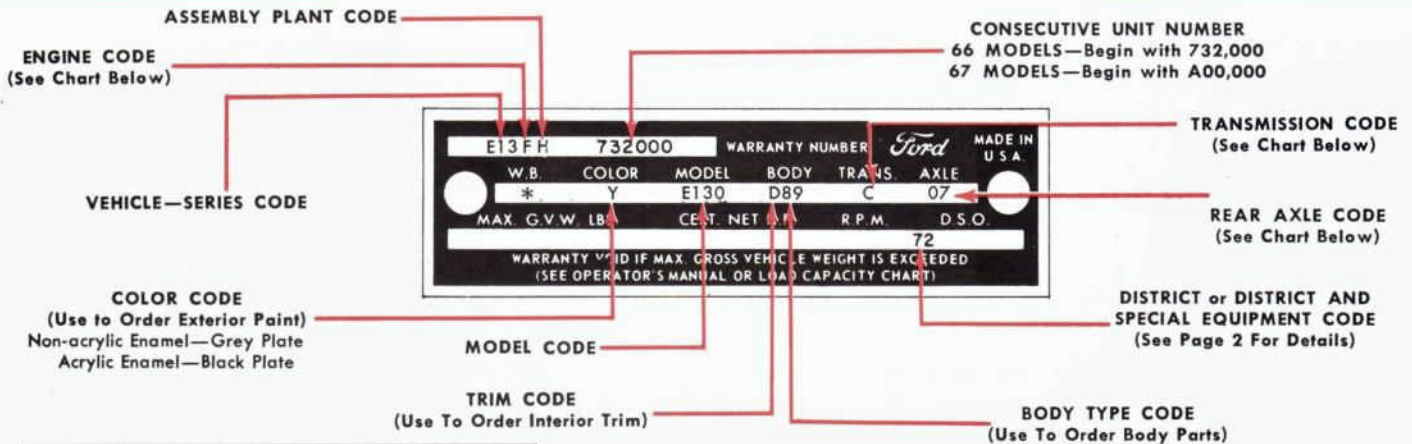
ENGINE CODES			
CODE	CYL.	C.I.D.	CARB. VENTURI
A	6	240	1V
F	6	170	1V
N	8	289	2V

TRANSMISSION CODES	
CODE	TRANSMISSION TYPE
C	3-Speed Manual Shift
G	3-Speed Cruise-O-Matic

REAR AXLE CODES			
REGULAR	RATIO	RATING	LOCKING
01	3.50	2300 lb.	—
02	4.00	2300 lb.	—
07	3.00	3050 lb.	A7
11	3.50	3050 lb.	B1
12	4.11	3050 lb.	—
13	4.57	3050 lb.	B3



## 1966-67 FALCON CLUB WAGON & ECONOLINE IDENTIFICATION PLATES



ENGINE CODES			
CODE	CYL.	C.I.D.	CARB. VENTURI
A	6	240	1V
F	6	170	1V

TRANSMISSION CODES	
CODE	TRANSMISSION TYPE
C	3-Speed Manual
G	H.D. Cruise-O-Matic

REAR AXLE CODES			
REGULAR	RATIO	RATING	LOCKING
01	3.50:1	2300 lb.	—
02	4.00:1	2300 lb.	—
07	3.00:1	3050 lb.	A7
11	3.50:1	3050 lb.	B1
12	4.11:1	3050 lb.	B2
13	4.57:1	3050 lb.	B3

\*—NOT SHOWN ON FALCON CLUB WAGON AND ECONOLINE





# 1963-64-65 FALCON CLUB WAGON & ECONOLINE IDENTIFICATION PLATES



ASSEMBLY PLANT CODE

ENGINE CODE  
(See Chart Below)

VEHICLE—SERIES CODE

COLOR CODE  
(Use to Order Exterior Paint)  
Non-acrylic Enamel—Grey Plate  
Acrylic Enamel—Black Plate

MODEL YEAR CODE

TRIM CODE  
(Use To Order Interior Trim)

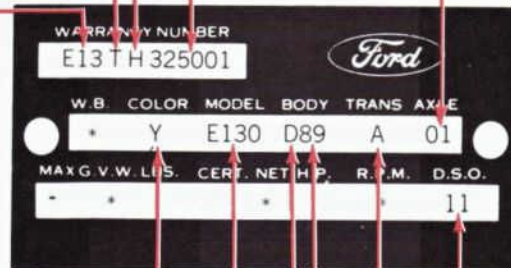
CONSECUTIVE UNIT NUMBER  
63 MODELS—Begin With 325001  
64 MODELS—Begin With 445001  
65 MODELS—Begin With 580001

REAR AXLE CODE  
(See Chart Below)

DISTRICT or DISTRICT AND  
SPECIAL EQUIPMENT CODE  
(See Page 2 For Details)

TRANSMISSION CODE  
(See Chart Below)

BODY TYPE CODE  
(Use To Order Body Parts)



## ENGINE CODES

CODE	CYL.	C.I.D.	CARB. VENTURI
J	6	240	1V (1965 only)
S	6	144	1V (1963-64 only)
T	6	170	1V

## TRANSMISSION CODES

CODE	TRANSMISSION TYPE
A	3-Speed Manual
F	4-Speed Manual
G	H.D. Cruise-O-Matic
6	C4 Dual Range Automatic (1963-65 only)

## REAR AXLE CODES

REGULAR 65	64-63	RATIO	RATING	LOCKING 65	64-63
01	—	3.00:1	2780 lb.	A1	—
—	02	4.00:1	2300 lb.	—	—
03	01	3.50:1	2300 lb.	—	—
04	—	3.50:1	2780 lb.	A4	—
05	03	4.11:1	2780 lb.	A5	A3
06	04	4.57:1	2780 lb.	A6	A4

\*—NOT SHOWN ON  
FALCON CLUB WAGON  
AND ECONOLINE

# 1961-62 FALCON CLUB WAGON & ECONOLINE IDENTIFICATION PLATES

ASSEMBLY PLANT CODE

ENGINE CODE  
(See Chart Below)

VEHICLE—SERIES CODE

WHEELBASE  
(inches)

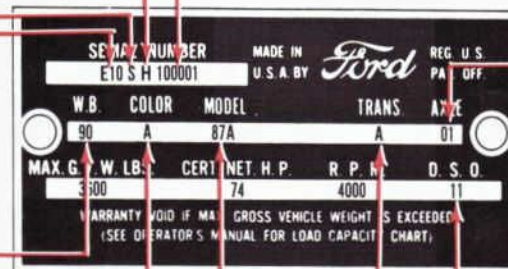
COLOR CODE  
(Use to Order Exterior Paint)

CONSECUTIVE UNIT NUMBER  
1961—Begins With 100001  
1962—Begins With 205001

REAR AXLE CODE  
(See Chart Below)

DISTRICT or DISTRICT AND  
SPECIAL EQUIPMENT CODE  
(See Page 2 For Details)

TRANSMISSION CODE  
(See Chart Below)



MODEL CODE

## ENGINE CODES

CODE	CYL.	C.I.D.	CARB. VENTURI
S	6	144	1V
T	6	170	1V (1962 only)

## TRANSMISSION CODES

CODE	TRANSMISSION TYPE
1	3-Speed Manual (1961)
A	3-Speed Manual (1962)

\*—NOT SHOWN ON  
FALCON CLUB WAGON  
AND ECONOLINE

## REAR AXLE CODES

CODE	RATIO
01	3.50:1
02	4.00:1



# 1961-68 TRUCK INFORMATION

## F-100 AND UP...

### FORD TRUCK SERIES IDENTIFICATION SYSTEM

Ford truck series designations consist of:

- A letter(s) prefix identifying the truck type
- A three or four digit series number indicating the truck size
- A suffix "D" indicating Diesel engine series (except City-Size Diesels, which have a four digit series number 3500 thru 7000 to identify them from comparable gas engine models)
- A Code system is used to identify Gas from Diesel engines under the MODEL section of the Identification plate. Example: F-950 (Gas), K-950 (Diesel)

Ford trucks are commonly classified into general weight groups as follows:

SERIES NUMBER	WEIGHT GROUP
100, 250, 350, 3500, 400, 4000	Light
500, 5000, 550, 600	Medium
6000, 700, 7000, 750, 800, 8000 (exc. tandems)	Heavy
750, 800, 8000 Tandems, and all 850, 950, 1000	Extra Heavy



**B-SERIES**



**C-SERIES**



**H-SERIES**

IDENTIFICATION MODEL CODE	PREFIX	SERIES NUMBERS	SUFFIX	SERIES DESCRIPTION
F	F	100 thru 1000		Conventional (Gas)
K	F	8000		Conventional (Diesel)
K	F	950 and 1000	D	Conventional (Diesel)
T	T	800 thru 950		Tandem Axle (Gas)
U	T	8000		Tandem Axle (Diesel)
U	T	850 and 950	D	Tandem Axle (Diesel)
N	N	500 thru 1000		89" BBC Conv. (Gas)
R	N	6000 and 7000		89" BBC Conv. (Diesel)
R	N	1000	D	89" BBC Conv. (Diesel)
S	NT	850 and 950		89" BBC Tandem (Gas)
W	NT	850 and 950	D	89" BBC Tandem (Diesel)
C	C	550 thru 1000		Tilt Cab (Gas)
D	C	6000 thru 8000		Tilt Cab (Diesel)
L	CT	750 thru 950		Tilt Cab Tandem (Gas)
Q	CT	8000		Tilt Cab Tandem (Diesel)
H	H	1000		Hi-Tilt Cab (Gas)
Y	H	1000	D	Hi-Tilt Cab (Diesel)
J	HT	950		Hi-Tilt Cab Tandem (Gas)
A	HT	950	D	Hi-Tilt Cab Tandem (Diesel)
Z	W	1000	D	Hi-Tilt Tractor (Diesel)
X	WT	1000	D	Hi-Tilt Tractor (Diesel)
B	B	500 thru 750		School Bus Chassis (Gas)
V	B	7000		School Bus Chassis (Diesel)
P	P	100 thru 600		Parcel Delivery (Gas)
G	P	3500 thru 6000		Parcel Delivery (Diesel)

Shown below is a typical Truck identification plate.

Model years are identified by a consecutive unit block number system as shown in the following chart.

#### 1961-1968 CONSECUTIVE UNIT PRODUCTION NUMBERS

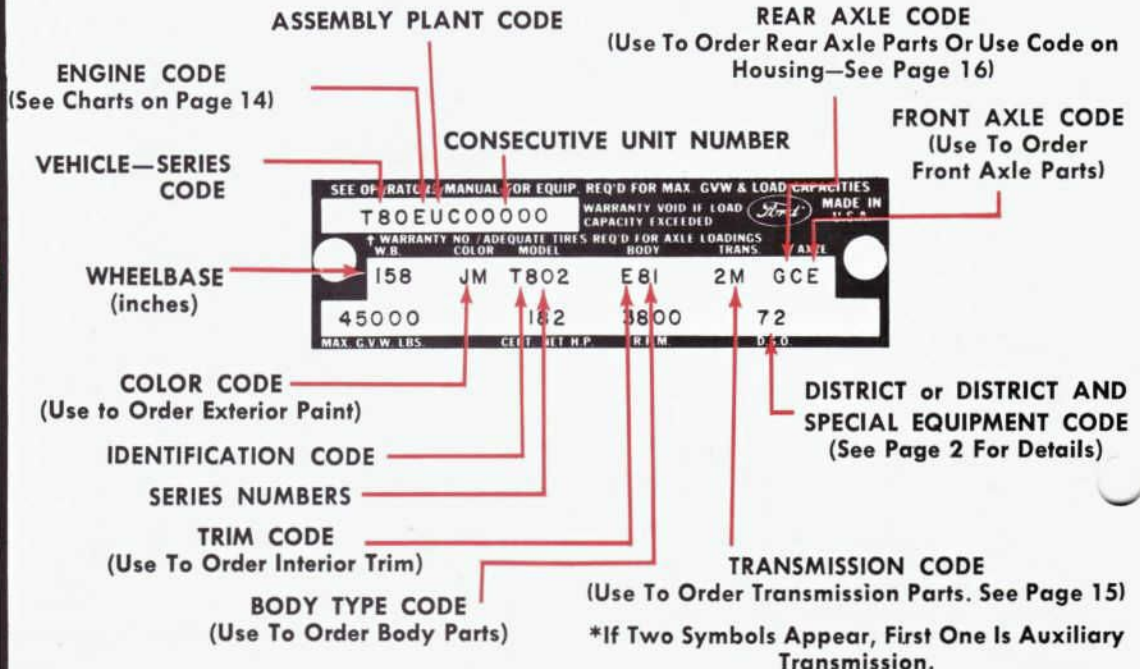
1961.....100,001—205,000	1964.....445,001—580,000	1967.....A00,000—B49,999
1962.....205,001—325,000	1965.....580,001—731,999	1968.....C00,000—D81,999
1963.....325,001—445,000	1966.....732,000—913,999	



**P-SERIES**



**NT-SERIES**





# 1961-68 TRUCK ENGINE CODES

## GAS ENGINE CODES

CODE	ENGINE		Number Carb. Venturi	TYPE	Certified Net Horsepower	R.P.M.
	No. Cyl.	Cubic Inch Disp.				
<b>1961</b>						
S	6	144	1		74	4000
A	6	223	1	(Economy)	93	3200
J	6	223	1		114	3600
B	6	262	1		132	3600
C	8	292	2	M/D	135	3800
D	8	292	4	Heavy Duty	153	3800
N	8	302	4		163	3600
F	8	332	4		173	3600
G	8	401	2		180	3400
P	8	401	4		198	3400
H	8	477	2		204	3200
Q	8	477	4		222	3200
R	8	534	4		235	3000
<b>1962-64</b>						
S	6	144	1		79	4000
T	6	170	1		85	3600
1962	A	6	223	1 (Economy)	93	3400
J	6	223	1		114	3600
B	6	262	1	L/D	132	3600
B	6	262	1	H/D	132	3600
C	8	292	2	M/D	135	3800
D	8	292	4	Heavy Duty	153	3600
1962-63	N	8	302	2	159	3800
1962-63	I	8	302	4	163	3600
1962-63	F	8	332	2	167	3800
1962-63	W	8	332	4	173	3600
G	8	401	2		180	3400
P	8	401	4		198	3400
H	8	477	2		204	3200
Q	8	477	4		222	3200
R	8	534	4		235	3000
1964	A	8	330	2 M/D	160	3800
1964	M	8	330	2 H/D	160	3800
1964	K	8	361	2	176	3800
1964	9	8	391	4	199	3800

CODE	ENGINE		Number Carb. Venturi	TYPE	Certified Net Horsepower	R.P.M.
	No. Cyl.	Cubic Inch Disp.				
<b>1965</b>						
T	6	170	1		85	3600
J	6	240	1		129	4000
B	6	300	1	L/D-100/500	150	3600
B	6	300	1	H/D-550/600	150	3600
D	8	352	2		172	4000
A	8	330	2	M/D	160	3800
M	8	330	2	H/D	160	3800
K	8	361	2		176	3800
9	8	391	4		199	3800
G	8	401	2		180	3400
P	8	401	4		198	3400
H	8	477	2		204	3200
Q	8	477	4		222	3200
R	8	534	4		235	3000
<b>1966-68</b>						
A	6	240	1V		129	4000
B	6	300	1V	L/D-100/500	139	3600
B	6	300	1V	H/D-550/600	139	3600
C	8	330	2V	M/D	164	3800
D	8	330	2V	H/D	164	3800
E	8	361	2V		182	3800
F	8	391	4V		199	3800
F	6	170	1V		75	3600
1968	H	8	390	2V F100/350	190	3900
H	8	401	4V	850/950 Series	198	3400
K	8	477	4V	S/D	222	3200
L	8	534	4V	S/D	235	3000
1968	N	8	289	2V	144	4000
Y	8	360	2V		179	4000
1966	J	8	477	2 S/D	204	3200
1966	G	8	401	2 S/D	180	3400
1966-67	Y	8	352	2	172	4000

## DIESEL ENGINE CODES

<b>1961</b>						
V	6	672	NH-180		169	2100
W	6	672	NH-195		183	2100
X	6	743	NH-220		208	2100
Y	6	743	NHE-180 (Economy)		169	1950
Z	6	743	NHE-195 (Economy)		184	1950
<b>1962-65</b>						
E	6	330	Dagenham		104	2500
O	6	855	NH-250		234	2100
1962/64	V	6	672	NH-180	169	2100
X	6	743	NH-220		208	2100
Y	6	743	NHE-180 (Economy)		169	1950
Z	6	743	NHE-195 (Economy)		184	1950
1963	2	6	588	V6-200	185	2600
1963/	3	8	784	V8-265	255	2600
1963/	4	4	220	Dagenham	65	2500
1964/	6	6	588	V6E-195	184	2500
1964/	7	8	785	V8E-235	222	2400
1964/	8	6	855	NHE-225	213	1950
<b>1966-68</b>						
A	6	855	Cummins-NHC-250		213	2100
B	6	588	Cummins-V6E-195		184	2500
1968	C	8	636	Caterpillar	225	
1966-67	C	6	743	Cummins-NHE-180	169	1950
D	6	743	Cummins-NHE-195		184	1950
E	6	743	Cummins-NH-220		208	2100
F	8	784	Cummins-V8E-235		222	2400
G	8	784	Cummins-V8-265		250	2600
1966	H	6	855	Cummins-NHE-225	213	1950
1966-67	H	6	855	Cummins-NHC-250	213	1950
1966	J	6	855	Cummins-NH-250	234	2100
J	6	855	Cummins-NHC-250		234	2100
1967-68	J	4	242	Dorset	74	2800

<b>1966-68 (Continued)</b>						
1968	K	6	525	Caterpillar-1673-A	206	2200
1966-67	K	6	525	Caterpillar-1673-A	208	2200
L	6	525	Caterpillar-1673-B		228	2200
M	6	855	Cummins-NTC-260		247	2100
N	6	855	Cummins-NTC-280		267	2100
P	6	855	Cummins-NTC-300		287	2100
Q	6	855	Cummins-NTC-320		307	2100
R	6	855	Cummins-NTC-335		322	2100
S	6	426	Detroit Diesel-6-71N		207	2100
T	8	568	Detroit Diesel-8V-71N		298	2100
S	6	426	Detroit Diesel-6-71N		203 218(1967)	2100
T	8	568	Detroit Diesel-8V-71N		298 318(1967)	2100
1968	U	8	460	Caterpillar	150	
1968	U	8	522	Caterpillar	150	
1966	U	4	220	Dagenham	65	2500
1966	V	6	330	Dagenham	104	2500
1968	V	8	522	Caterpillar	175	
1967-68	W	6	363	Dorset	116	2800
1967-68	X	6	464	Cummins-CF-160	141	2800
1968	Y	6	464	Cummins-C-180	159	2500
1967	Y	6	464	Cummins-C-180	162	2500
1968	2	6	426	Detroit Diesel-6-71N	225	2100
2	6	426	Detroit Diesel-6-71N		223(1966/) 238(1967)	2100
1968	4	8	573	Caterpillar	200	
6	8	568	Detroit Diesel-8V-71N		275 290(1967)	2100
7	8	568	Detroit Diesel-8V-71NE		249	1950
1968	8	6	318	Detroit Diesel-6V-53N	181	2600
1968	9	6	426	Detroit Diesel-6-71NE	184	1950
9	6	426	Detroit Diesel-6-71NE		180(1966/) 195(1967)	1950



# 1961-68 TRUCK TRANSMISSION CODES

No. Spd.	TYPE	1961	1962	1963	1964	1965	1966	1967	1968
3	Standard-Light Duty (Ford)	A	A	A	▲A	▲A	C	C	C
3	Medium Duty (Warner T89C, T89E or T89F)	D	D	D	D	D	D	D	D
3	Heavy Duty (Warner T87E or T87G)	E	E	E	E	E	E	E	E
3	Overdrive (Ford w/Warner T85 or T86)	B	B	B	B	B	B	B	B
3	H/D Cruise-O-Matic	G	G	G	G	G	G	G	G
3	C4 Automatic Dual Range				6	6			
4	Synchronized (Warner T19)								P
4	Synchronized (Warner T98A or T18)	F	F	F	F	F	F	F	F
4	Synchronized (Dagenham-Zephyr)			∅F	∅F	∅F			
4	Synchronized (New Process 435)				▲A	▲A	A	A	A
4	Synchronized (New Process 435)				▲N	▲N			
5	Medium Duty-Direct (Clark 250-V)	J	*J	J	J	J	M	M	
5	Medium Duty-Direct (New Process N5A or N5B)		*J						
5	Medium Duty-Overdrive (Clark 251-V0)	K	*K	K	K	K	K	V	
5	Medium Duty-Overdrive (New Process N5C or N5D)		*K						
5	Heavy Duty-Direct (Clark 2651-V1, 2653-V1)	L	*L	L	L	L	L	L	L
5	Heavy Duty-Direct (New Process N5G or N5H)		*L						
5	Heavy Duty-Direct (New Process 541-FL)						O	O	O
5	Heavy Duty-Direct (Clark 2621-V1, 2622-V1)	W	*W	W	W	W	N	R	R
5	Heavy Duty-Direct (Clark 305-V)					F	H	H	H
5	Heavy Duty-Direct (Clark 307-V)					I	I	I	I
5	Heavy Duty-Direct (New Process N5L or N5M)		*W						
5	Heavy Duty-Direct (Clark 282-V)								2
5	Heavy Duty-Direct (Clark 285-V)								M
5	Heavy Duty-Direct (New Process 541-FD)								9
5	Heavy Duty-Overdrive (Clark 264-V0)	M	*M	M	M	M	J	J	J
5	Heavy Duty-Overdrive (Clark 280-V0)								4
5	Heavy Duty-Overdrive (New Process N5J or N5K)		*M						
5	Heavy Duty-Overdrive (New Process 541-FO)						P	P	T
5	Extra Heavy Duty-Direct (Clark 385-V)								7

No. Spd.	TYPE	1961	1962	1963	1964	1965	1966	1967	1968
5	Extra Heavy Duty-Direct (Clark 387-V)								D
5	Extra Heavy Duty-Direct (Spicer 5652)	N	N	N	▲N	▲N	Q	Q	Q
5	Extra H/D-Direct (Spicer 5756B)	P	P	P	P	P	S	S	S
5	Extra Heavy Duty-Overdrive (Clark 380-V0)								G
5	Exclusive Direct-Diesel (Fuller 5H75)				9	9	G	G	—
5	Exclusive Direct Drive (401-477-534 eng.)(Spicer 5652)	N	N	N	▲N	▲N			—
5	Exclusive Direct Drive (401-477-534 eng.)(Spicer 5756B)	P	P	P	P	P			—
5	Exclusive H/D-Direct (Spicer 6352)-Iron	Q	Q	Q	Q	Q	N	N	N
5	Exclusive H/D-Direct (Spicer 6352B)-Iron	U	U	U	U	U	L	W	W
5	Exclusive H/D-Direct (Spicer 6354)-Aluminum		4	4	4	4	2	2	
5	Exclusive H/D-Direct (Spicer 6354B)-Aluminum		8	8	8	8	6		
5	Exclusive H/D-Direct (Spicer 6452A)-Iron	V	V	V	V	V	M	M	
5	Exclusive H/D-Direct (Spicer 6454A)-Aluminum		7	7	7	7	5		
5	Exclusive H/D-Direct (6852G)-Iron	R	R	R	R	R	U	U	U
5	Exclusive H/D-Direct (Spicer 6854G)-Aluminum		6	6	6	6	4		
5	Exclusive H/D-Overdrive (Spicer 6453A)-Iron	S	S	S	S	S	K	K	K
5	Exclusive H/D-Overdrive (Spicer 6455A)-Aluminum		5	5	5	5	3		
5	Exclusive H/D-Direct-Diesel (Fuller 5H74)				X	X	F	F	E
5	Exclusive H/D-Direct (Fuller T-905-A)-Iron						X	X	X
5	Exclusive H/D-Direct (Fuller T-905-B)-Iron						H	O	O
5	Exclusive H/D-Direct (Fuller 5HA-74)-Aluminum						7	7	F
5	Exclusive H/D-Direct (Fuller 5HA-75)-Aluminum						8		
5	Exclusive H/D-Direct (Spicer 5852)							3	3
	Fordomatic	C							
6	Transmatic (Allison MT 30)	H	H	H	H	H	X	X	X
6	Transmatic (Allison MT 40)		2	2	2	2	Y	Y	Y
6	Transmatic (Allison MT 41)							Y	Y
6	Transmatic (Allison MT 42)		3	3	3	3	1	1	1
8	Roadranger H/D-Direct (Fuller R46)	T	T	T	T	T	T	T	T

## 1961-1968 MAXIMUM DUTY TRANSMISSION CODES

No. Speeds	TYPE	CODE			
		1961/65	1966	1967	1968
5	Direct Drive (Fuller 5W74)	‡A			
5	Direct Drive (Spicer 8052)-Iron	C	A	A	
5	Direct Drive (Spicer 8054)-Aluminum	Z	P		
5	Direct Drive (Spicer 8552-A)-Iron				1
5	Overdrive (Spicer 8051-A & C)-Iron	B	J	P	
5	Overdrive (Spicer 8055-A & C)-Aluminum	Y	O		
10	Direct Drive (Fuller R96)-Iron	D	B	B	B
10	Direct Drive (Fuller RA96)-Aluminum	E	C		
10	Direct Drive (Fuller RT-910)		V	V	V

No. Speeds	TYPE	CODE			
		1961/65	1966	1967	1968
10	Direct Drive (Fuller RT-510)				C
10	Overdrive (Fuller RTO-910)		W	5	5
10	Overdrive (Fuller R960)-Iron	I	E		
10	Overdrive (Fuller RA960)-Aluminum	G	D		
12	Overdrive (Spicer 8125)-Aluminum	O	R	4	
12	Overdrive (Spicer 8312)-Aluminum			8	8
15	Direct Drive (Fuller RT-915)		9	9	9
15	Overdrive (Fuller RTO-915)	I	6	6	6

\*Clark and New Process transmission assemblies have been used as alternates in production for 1962 trucks.

∅Econoline only. †1961/64.

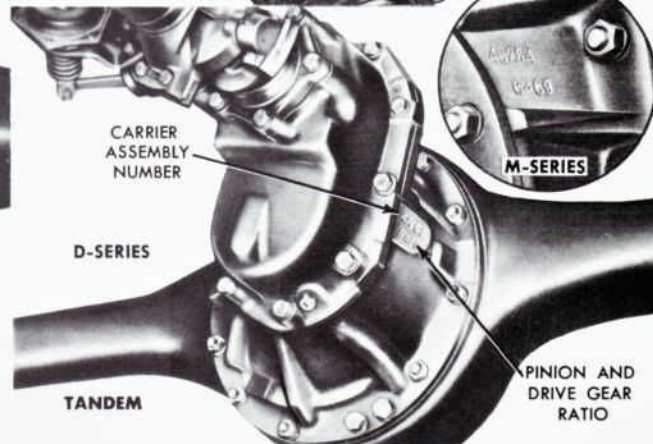
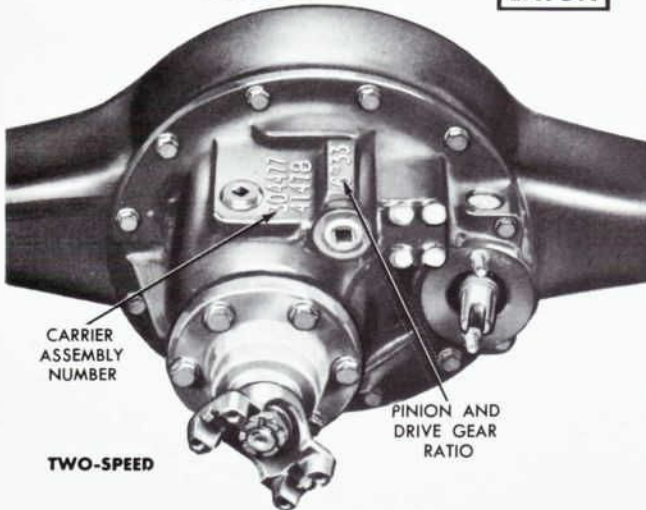
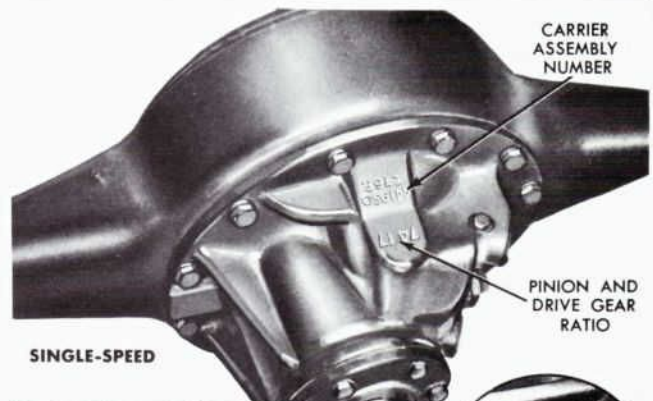
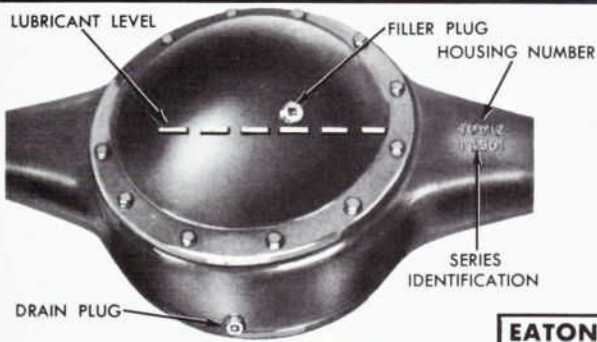
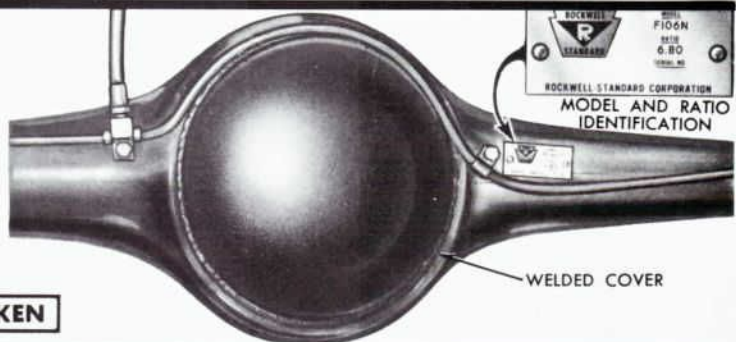
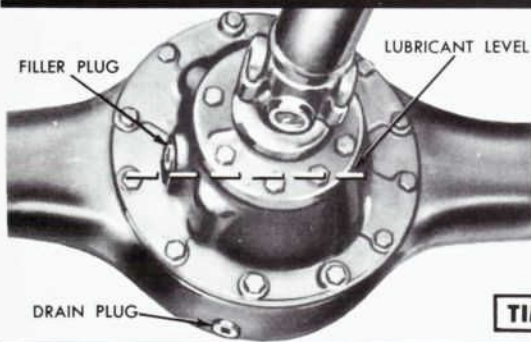
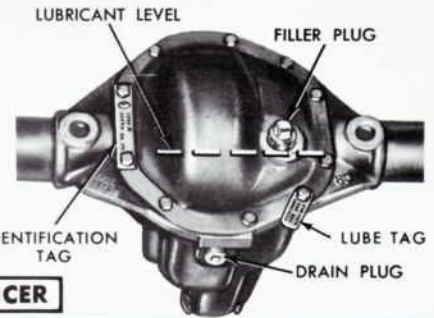
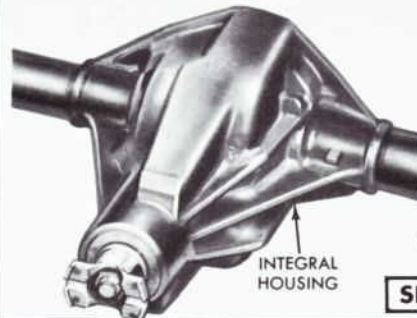
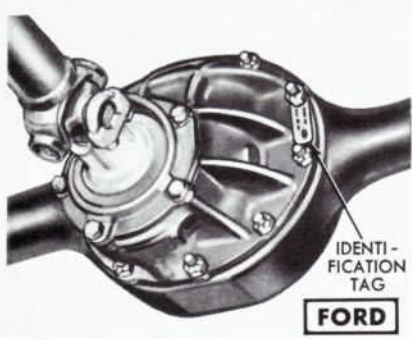
▲ Code N applies to trucks with 5 speed Spicer 5652 transmission; also applies to F600 series equipped with New Process 435 four speed transmission.

▲ Code A applies to trucks with 3 speed standard Ford transmission; also applies to C & N600 Series trucks built at Louisville with New Process 435 four speed transmission.



# TRUCK REAR AXLE IDENTIFICATION

Many types of rear axle assemblies are available in the Ford truck line. The type can be identified from the plate on 1961 thru 1968 models as shown on page 12. Rear axle identification can also be made from the axle housing on 1957 thru 1968 models. Typical locations are shown below.



■ WHEN USING THE REAR AXLE IDENTIFICATION CHART, THE TRUCK MODEL AND YEAR SHOULD BE VERIFIED FIRST, AS THE MANUFACTURER'S AXLE MODEL AND CARRIER IDENTIFICATION NUMBERS MAY BE THE SAME FOR TWO OR MORE AXLES.



COMPLIMENTS OF

YOUR SOURCE FOR GENUINE FORD AND AUTOLITE ORIGINAL EQUIPMENT PARTS

**Autolite  
spark plugs  
are original  
equipment in  
all Ford built  
cars & trucks.**



... and performance proven for all make cars and trucks!