

# SHOP TIPS

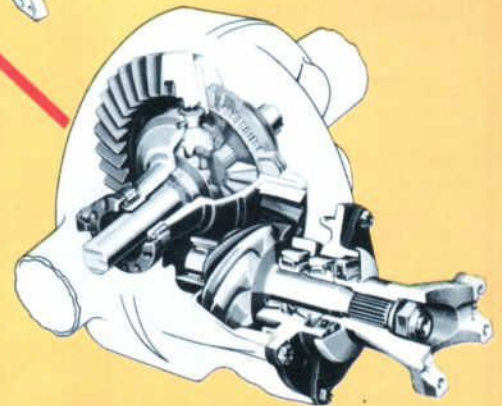
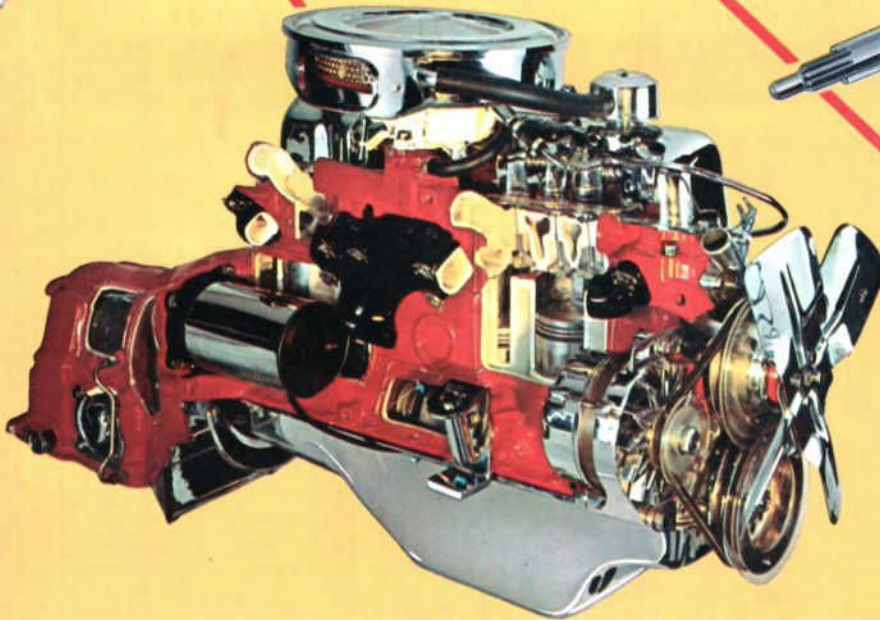
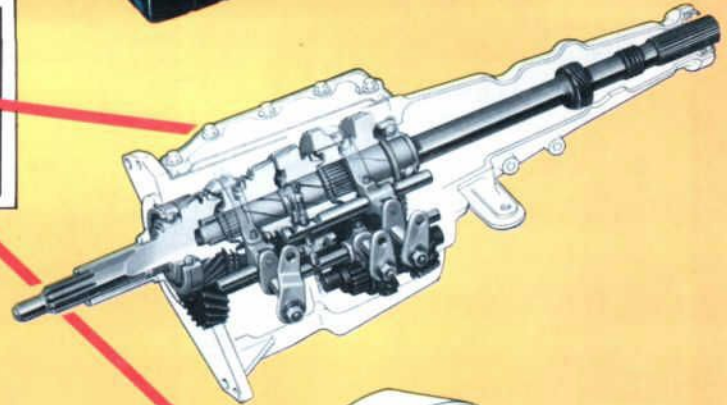
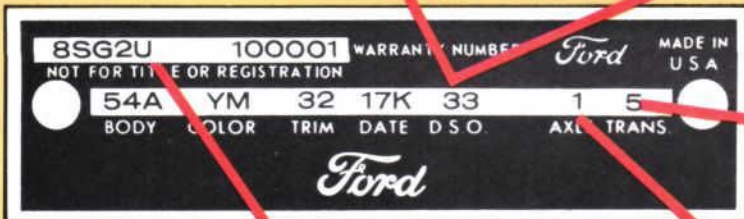
FROM

**Autolite**

*Ford*

VOL. 7, NO. 3

NOVEMBER, 1968



Technical parts and service information published by the Autolite-Ford Parts Division and distributed by Ford and Lincoln-Mercury dealers to assist servicemen in Service Stations, Independent Garages and Fleets.

## YOUR GUIDE TO PARTS IDENTIFICATION . . .

How to read the Warranty Plate on 1961-1969 Ford Motor Company Vehicles

	Page
1961-1969 Ford Vehicle Identification.....	2
1969 Ford & L-M Car Identification Plate..	3
1968 Ford & L-M Car Identification Plate..	4
1967 Ford & L-M Car Identification Plate..	5
1966 Ford & L-M Car Identification Plate..	6
1965 Ford & L-M Car Identification Plate..	7
1963-64 Ford & L-M Car Identification Plate	8
1961-62 Ford & L-M Car Identification Plate	9
1966-69 Bronco Identification Plate.....	10
1968-69 Falcon Club Wagon and Econoline Identification Plate.....	11
1966-67 Falcon Club Wagon and Econoline Identification Plate.....	11
1963-64-65 Falcon Club Wagon and Econoline Identification Plate.....	12
1961-62 Falcon Club Wagon and Econoline Identification Plate.....	12
1961-69 Ford Truck Identification Plate...	13
Ford Truck Identification System.....	13
1961-68 Truck Engine Codes (Gas).....	14
1961-68 Truck Engine Codes (Diesel).....	14
1961-68 Truck Transmission Codes.....	15
Autolite Oil Filter Free-For-All.....	16

Be sure and file this and future bulletins for ready reference. If you have any suggestions for additional information that you would like to see included in this publication, please write to: Autolite-Ford Parts Division of Ford Motor Company, Ford Products Merchandising Dept., P.O. Box 3000, Livonia, Michigan 48151.

The description and specifications contained in this book were in effect at the time the publication was approved for printing. The Ford Motor Company, whose policy is one of continuous improvement, reserves the right to discontinue models at any time, or to change specifications or design without notice and without incurring obligation.



COPYRIGHT © 1968 FORD MOTOR COMPANY  
DEARBORN, MICHIGAN

# 1961-1969

## FORD VEHICLE IDENTIFICATION

As an aid to all service personnel in identifying models and components, this issue of Shop Tips explains how to read the vehicle identification plates for all Ford-built cars and trucks from 1961 thru 1969.

The identification plate is coded to describe information such as: Model Year, Body Type, Interior Trim, Exterior Paint Color, Transmission Type, Rear Axle Ratio, Engine and Carburetor Type.

The identification plate is located as follows:

### Passenger Cars, Falcon Club Wagons, Econolines

Located on the lock-face of the left front door, or on the left front body pillar.

### Trucks

Located on the lock-face of the left front door, or the upper cowl panel in the engine compartment, or inner side of glove box door, or right hand side of radiator support.

### Bronco

Located on the inside panel of the glove box door.

The identification plate is either *grey* or *black* and identifies the paint finish as follows:

### FOR THE YEARS 1963-64-65

*Black* plate identifies a vehicle painted with Non-Acrylic Enamel

*Grey* plate identifies a vehicle painted with Acrylic Enamel

### FOR THE YEARS 1966-67-68-69

*Black* plate identifies a vehicle painted with Acrylic Enamel

*Grey* plate identifies a vehicle painted with Non-Acrylic Enamel

Note: All Lincoln Continental plates are gold and only Acrylic Enamel is used on this car line.

### D.S.O. CODES (Special Equipment)

Many vehicles such as police cars, taxis and trucks have special equipment installed. Special equipment is identified by a D.S.O. code. D.S.O. codes have been stamped into truck plates since 1957 and passenger cars since 1962. In addition, all vehicles with special equipment delivered since January 1962 have a blue envelope in the glove box containing a copy of the Special Equipment Parts List used on that particular vehicle. The selling dealer also has a similar yellow copy.

A typical D.S.O. number might be 11-0645. The 11 indicates the district (in this case Boston) in which the vehicle was delivered, and the 0645 means it was the 645th vehicle with special equipment delivered for the year. NOTE: On some plates, you may find a D.S.O. number such as 11-, without a second set of numbers. This is NOT a vehicle with special equipment. The number (11) refers only to the District (Boston) in which the vehicle was delivered.

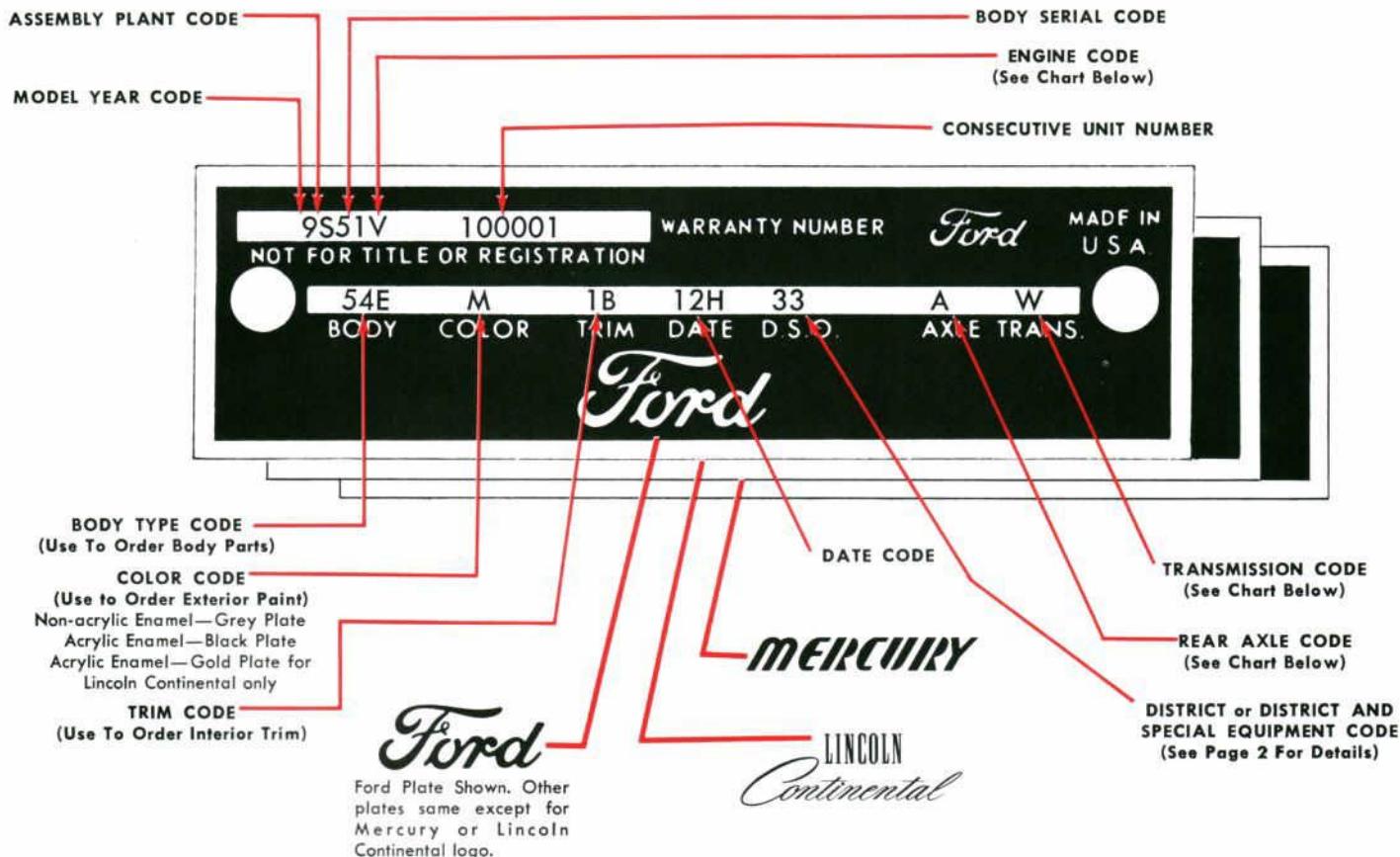
To order special equipment for vehicles delivered after January 1962, simply use the D.S.O. parts lists in the glove box. If the parts list is not available, then use the D.S.O. code on the identification plate. If neither is available, give your Ford or Lincoln-Mercury parts man any information stamped or stenciled on the part. He can then correctly deliver the part you need.

Heavy and extra heavy duty trucks built at the Louisville assembly plant since August 14, 1967 have a Truck Specification List in the glove box. It identifies the 37 major components used on the truck by part number. Special Order parts are identified by a (✓) or (X), and likewise can be ordered directly from your Ford Dealer.

# 1969

## FORD and LINCOLN-MERCURY CAR IDENTIFICATION PLATES

- FORD • FAIRLANE • FALCON • THUNDERBIRD
- MUSTANG • RANCHERO • COUGAR • MONTEGO
- MERCURY • CONTINENTAL MARK III
- LINCOLN-CONTINENTAL



### ENGINE CODES

CODE	CYL	CID	CARB VENTURI
A	8	460†	4V
B	6	240*	1V Police
D	8	302	2V Police & Taxi
E	6	240	1V Taxi
F	8	302	2V
H	8	351	2V
K	8	429	2V
L	6	250	1V
M	8	351	4V
N	8	429	4V
P	8	428	4V Police Interceptor
Q	8	428	4V Cobra Jet
R	8	428	4V Cobra Jet Ram Air
S	8	390	4V Improved Performance
T	6	200*	1V
U	6	170*	1V
V	6	240	1V
X	8	390†	2V Premium Fuel
Y	8	390	2V Regular Fuel

†L-M only  
\*Ford only

### TRANSMISSION CODES

CODE	TRANSMISSION TYPE
	<u>Manual</u>
1	3 Speed
5	4 Speed Wide Ratio (2.78 1st Gear)
6	4 Speed Close Ratio (2.32 1st Gear)
	<u>Automatic</u>
U	C6 (XPL)
W	C4 (XP3)
X	Cruise-O-Matic (FMX)
Z	C6 (XPL Special)

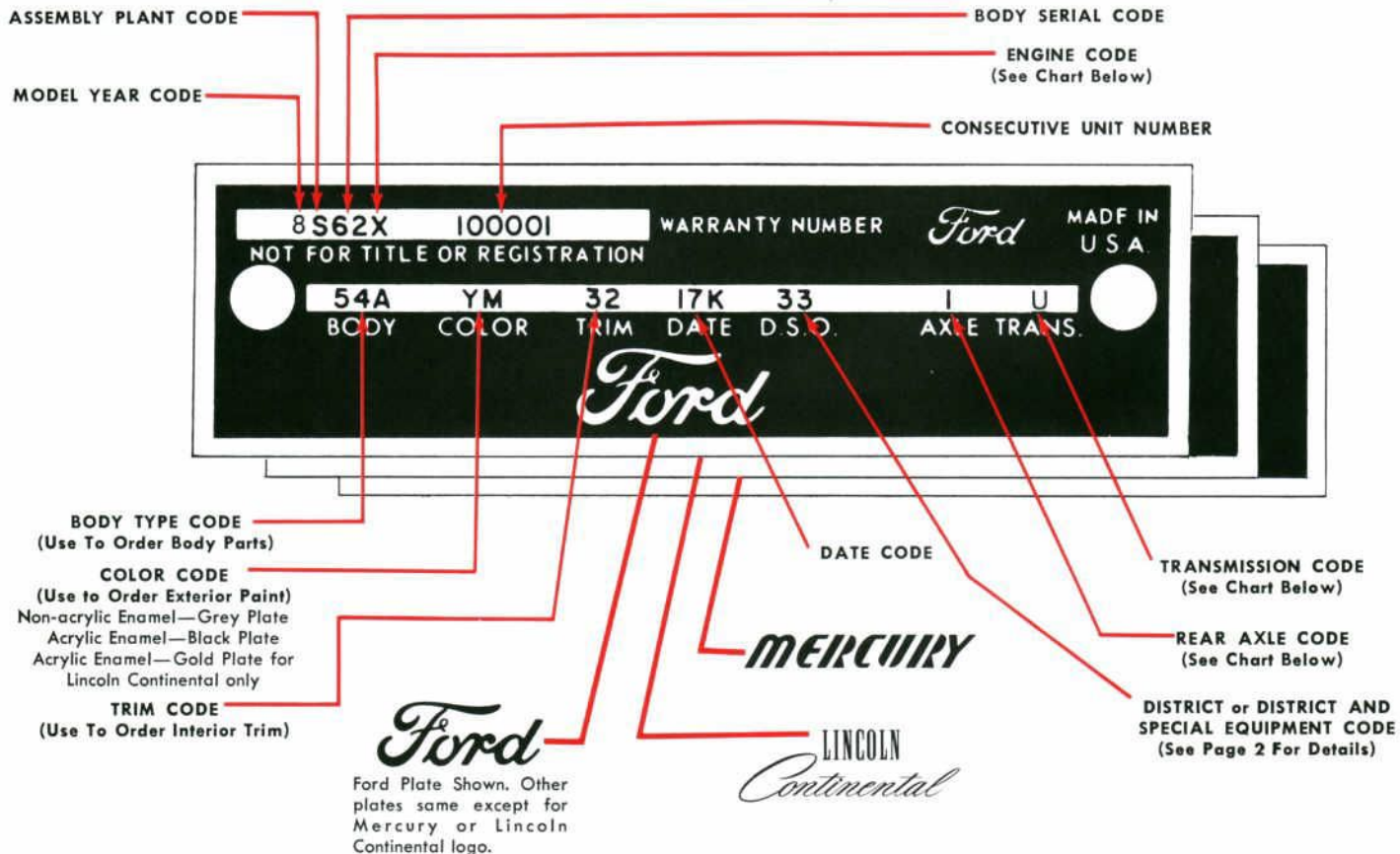
### REAR AXLE RATIO CODES

REGULAR	RATIO	LOCKING
F	2.35:1 (Mustang only)	—
2	2.75:1	K
3	2.79:1	—
4	2.80:1	M
5	2.83:1	—
6	3.00:1	Ø
C	3.08:1	U
7	3.10:1	—
8	3.20:1 (Falcon only)	Q
9	3.25:1	R
A	3.50:1	S
—	3.91:1	V
—	4.30:1	W

# 1968

## FORD and LINCOLN-MERCURY CAR IDENTIFICATION PLATES

- FORD • FAIRLANE • FALCON • THUNDERBIRD
- MUSTANG • RANCHERO • MERCURY
- COUGAR • MONTEGO • LINCOLN-CONTINENTAL



ENGINES CODES			
CODE	CYL.	CID	CARB. VENTURI
A	8	289	4V (Prem. Fuel)
B	6	240*	1V (Police)
C	8	289*	2V
E	6	240*	1V (Taxi)
F	8	302	2V
G	8	462†	4V (Lin.-Cont.)
H	8	390*	2V Auto. Trans.
J	8	302	4V
K	8	289*	4V (Special)
N	8	429*	4V
P	8	428	4V (Police)
Q	8	428	4V
R	8	427	8V (Hi-Perf.)
S	8	390	4V (GT)
T	6	200	1V
U	6	170*	1V
V	6	240*	1V
W	8	427	4V (Hi-Perf.)
X	8	390†	2V (Prem. Fuel)
Y	8	390	2V (3-Spd. Man.)
Z	8	390	4V

\*Ford Only  
†L-M Only

TRANSMISSION CODES	
CODE	TRANSMISSION TYPE
1	3 Speed Manual Shift
5	4 Speed Manual Shift
U	C6 Automatic (XPL)
W	C4 Automatic (XP3)
X	Cruise-O-Matic (FMX)*
Y	Cruise-O-Matic (MX)*
Z	C6 Automatic Special (XPL)

\*Ford Only

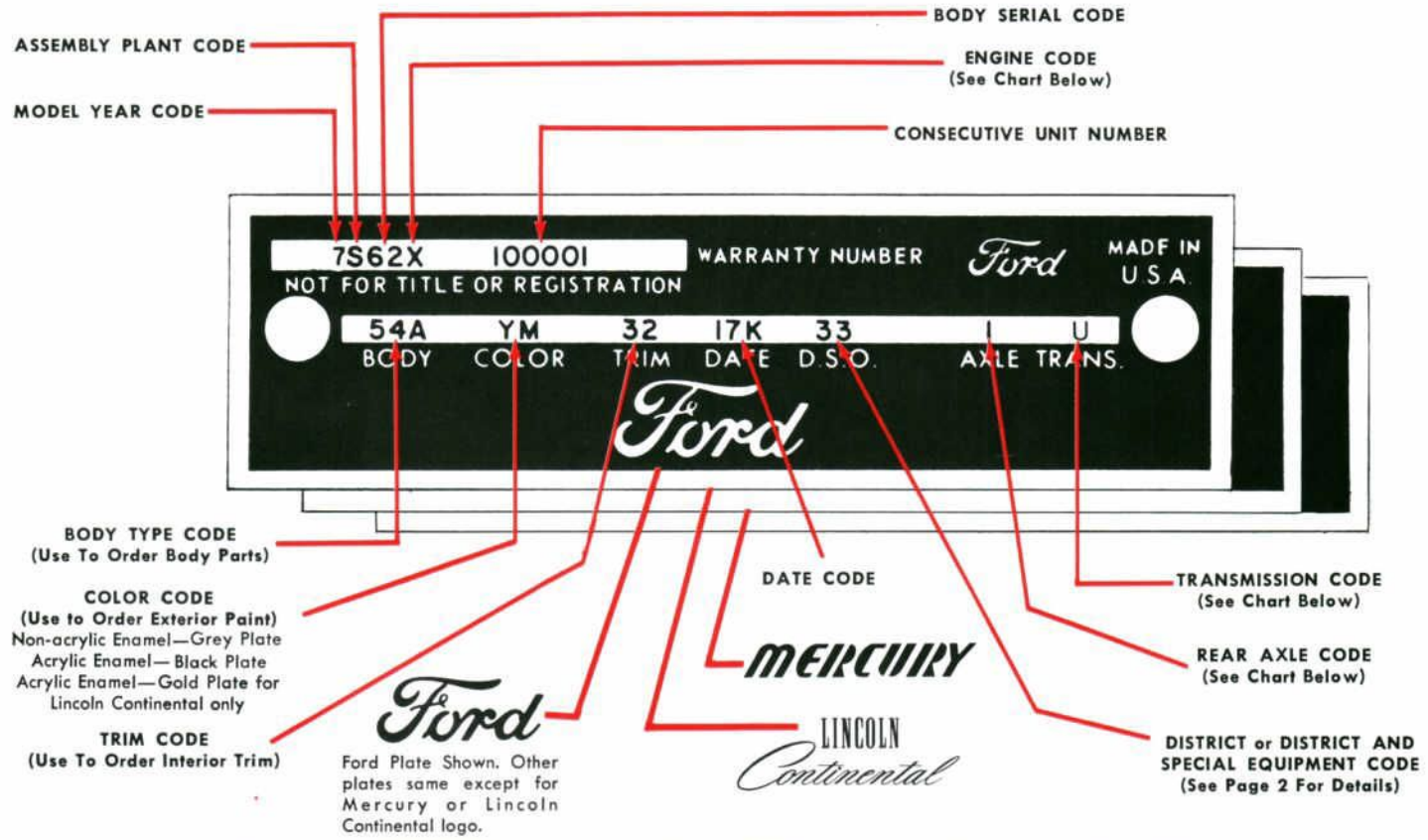
REAR AXLE RATIO CODES		
REGULAR	RATIO	LOCKING
0	2.50:1	—
1	2.75:1	A
2	2.79:1	B
3	2.80:1	C
4	2.83:1	D
5	3.00:1	E
6	3.20:1	F
7	3.25:1	G
8	3.50:1	H
9	3.10:1 (L-M Only)	—



# 1967

## FORD and LINCOLN-MERCURY CAR IDENTIFICATION PLATES

- FORD • FAIRLANE • FALCON • THUNDERBIRD • MUSTANG
- RANCHERO • MERCURY • LINCOLN-CONTINENTAL
- COUGAR • MERCURY INTERMEDIATE



ENGINE CODES			
CODE	CYL.	CID	CARB. VENTURI
A	8	289	4V (Prem. Fuel)
B	6	240*	1V (Police)
C	8	289	2V
D	8	427*	8V (Hi-Perf. SOHC)
E	6	240*	1V (Taxi)
G	8	462	4V (Lin.-Cont.)
H	8	390	2V (Auto. Trans.)
K	8	289	4V (Hi-Perf.)
L	8	427*	4V (Hi-Perf. SOHC)
P	8	428	4V (Police)
Q	8	428	4V
R	8	427	8V (Hi-Perf.)
S	8	390	4V (GT)
T	6	200	1V
U	6	170*	1V
V	6	240*	1V
W	8	427	4V (Hi-Perf.)
X	8	390†	2V (Prem. Fuel)
Y	8	390	2V (3 Spd. Man.)
Z	8	390*	4V

\*Ford Only  
†L-M Only

TRANSMISSION CODES	
CODE	TRANSMISSION TYPE
1	3 Speed Manual Shift (2.77)
2	Overdrive*
3	3 Speed Manual Shift (3.03)*
5	4 Speed Manual Shift
U	C6 Automatic (XPL)
W	C4 Automatic (XP)
X	Cruise-O-Matic (FX)*
Y	Cruise-O-Matic (MX)
Z	C6 Automatic Special (XPL)

\*Ford Only

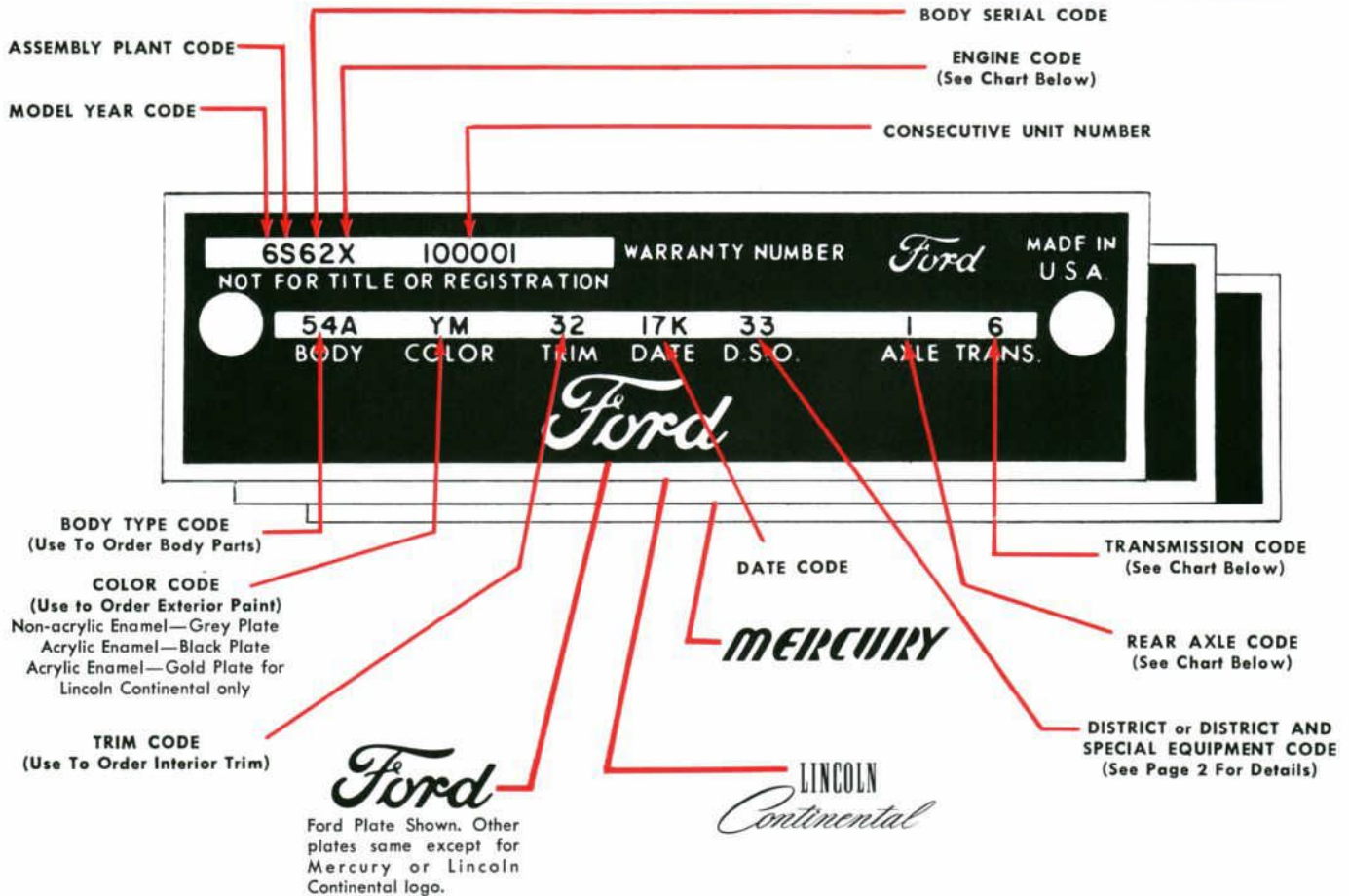
REAR AXLE CODES		
REGULAR	RATIO	LOCKING
0	2.79:1**	—
0	3.10:1	—
1	3.00:1	A
2	2.83:1	B
3	3.20:1	C
4	3.25:1	D
5	3.50:1	E
6	2.80:1	F
7	3.36:1*	G
7	3.89:1†	—
8	2.75:1	H
9	4.11:1	I
—	2.89:1†	4

\*Ford Only †L-M Only \*\*Fairlane, Falcon, Mustang

# 1966

## FORD and LINCOLN-MERCURY CAR IDENTIFICATION PLATES

- FORD • FAIRLANE • FALCON • THUNDERBIRD • MUSTANG
- RANCHERO • MERCURY • COMET • LINCOLN-CONTINENTAL



ENGINE CODES			
CODE	CYL.	CID	CARB. VENTURI
A	8	289*	4V (Prem. Fuel)
B	6	240*	1V (Police)
C	8	289	2V
E	6	240*	1V (Taxi)
G	8	462†	4V (Lin.-Cont.)
H	8	390	2V (Auto. Trans.)
K	8	289*	4V (Hi-Perf.)
M	8	410†	4V
P	8	428	4V (Police)
Q	8	428	4V
R	8	427	8V (Hi-Perf.)
S	8	390	4V (GT)
T	6	200	1V
U	6	170*	1V
V	6	240*	1V
W	8	427	4V (Hi-Perf.)
X	8	352*	4V (Power Opt.)
Y	8	390	2V
Z	8	390	4V

\*Ford Only †L-M Only

TRANSMISSION CODES	
CODE	TRANSMISSION TYPE
1	3 Speed Manual Shift (2.77)
2	Overdrive*
3	3 Speed Manual Shift (3.03)*
4	C6 Automatic (XPL)
5	4 Speed Manual Shift
6	C4 Automatic (XP)
7	Cruise-O-Matic (FX)*
8	Cruise-O-Matic (MX)

\*Ford Only

REAR AXLE CODES		
REGULAR	RATIO	LOCKING
0	3.10:1†	—
1	3.00:1	A
2	2.83:1	B
3	3.20:1	C
4	3.25:1	D
5	3.50:1	E
6	2.80:1	F
7	3.89:1†	—
8	3.89:1*	H
8	2.75:1†	H
9	4.11:1	I
—	2.89:1†	4

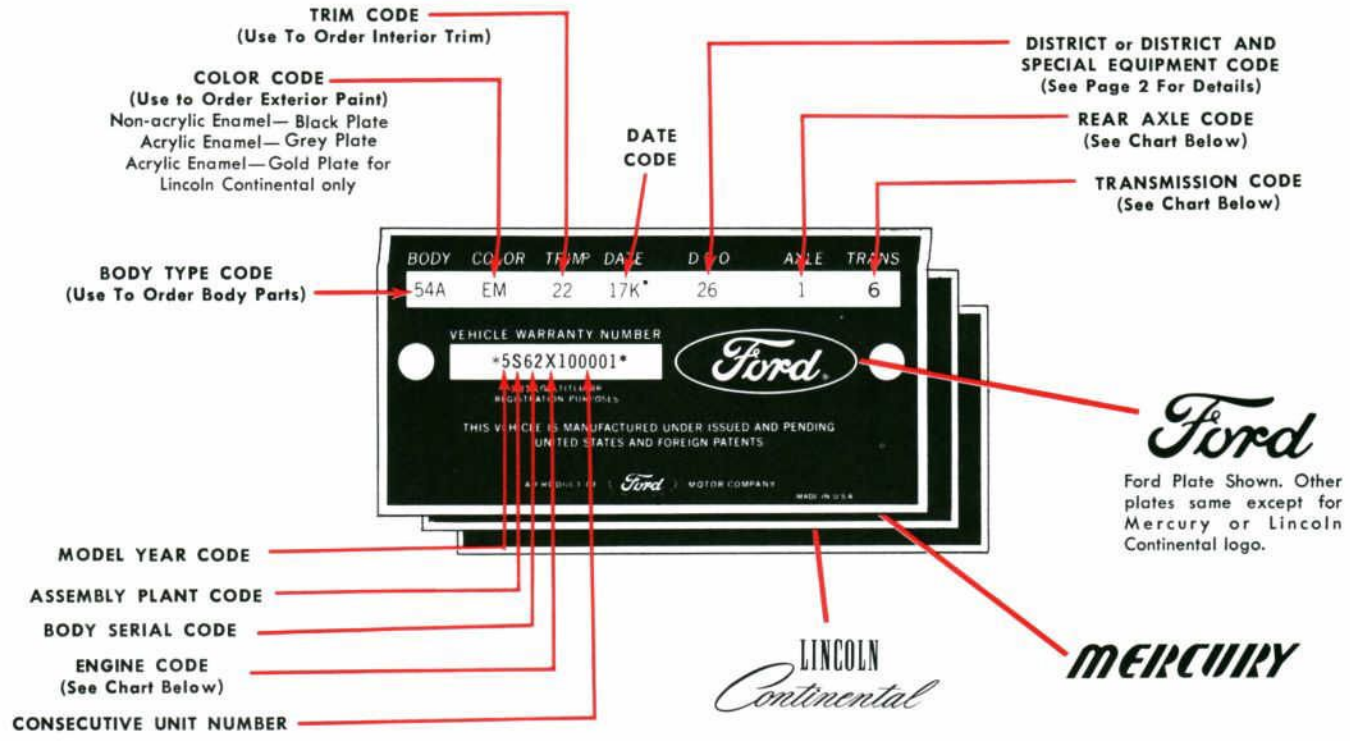
\*Ford Only †L-M Only



# 1965

## FORD and LINCOLN-MERCURY CAR IDENTIFICATION PLATES

- FORD • FAIRLANE • FALCON • THUNDERBIRD • MUSTANG
- RANCHERO • MERCURY • COMET • LINCOLN-CONTINENTAL



ENGINE CODES			
CODE	CYL.	CID	CARB. VENTURI
A	8	289	4V (Prem. Fuel)
B	6	240*	1V (Police)
C	8	289	2V
D	8	289*	4V (Reg. Fuel)
D	8	289†	2V (Special)
E	6	240*	1V (Taxi)
F	8	260*	2V
H	8	390†	2V (Special)
K	8	289*	4V (Hi-Perf.)
N	8	430†	4V (Lin.-Cont.)
P	8	390	4V (Police)
R	8	427	8V (Hi-Perf.)
T	6	200	1V
U	6	170*	1V
V	6	240*	1V
X	8	352*	4V (Power Opt.)
Y	8	390†	2V
Z	8	390	4V

\*Ford Only †L-M Only

TRANSMISSION CODES	
CODE	TRANSMISSION TYPE
1	3 Speed Manual Shift
2	Overdrive
4	Cruise-O-Matic*
5	4 Speed Manual Shift
6	C4 Dual Range Automatic (XP)
8	Merc-O-Matic (MX)†

\*Ford Only †L-M Only

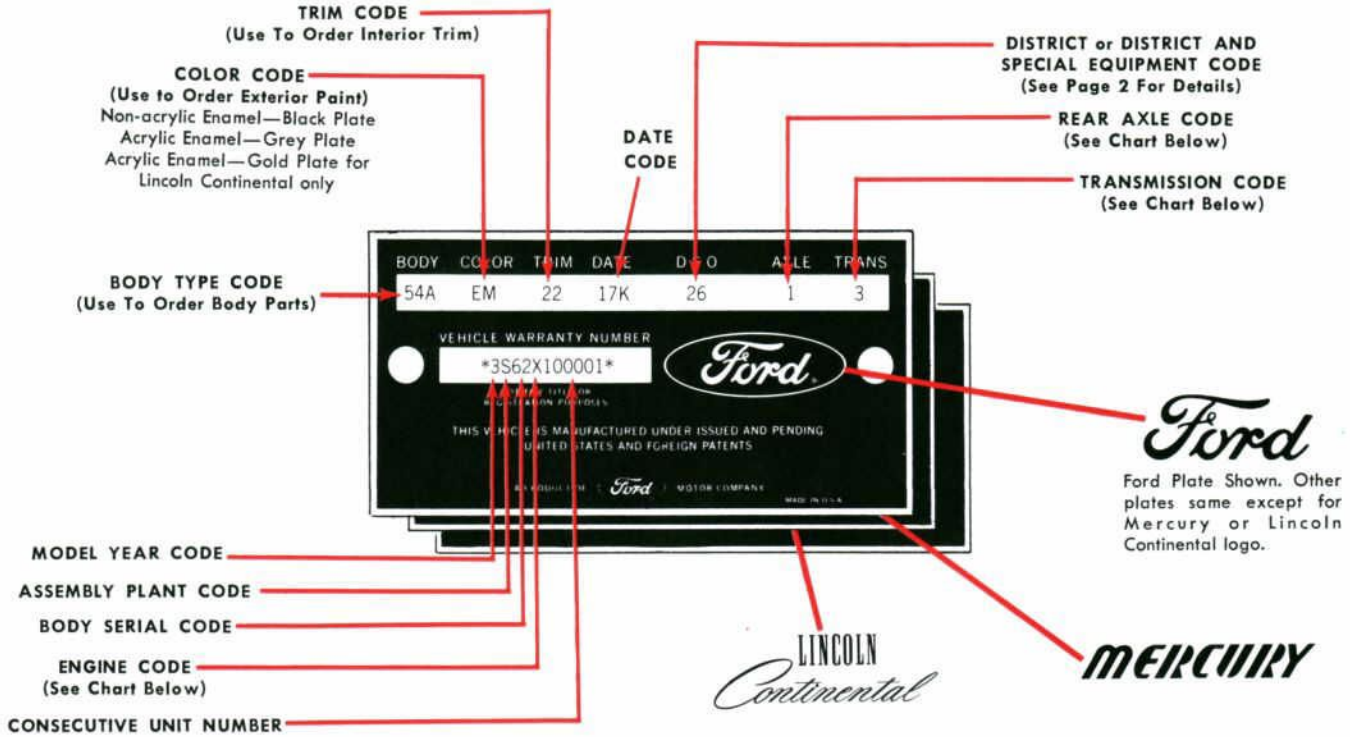
REAR AXLE CODES		
REGULAR	RATIO	LOCKING
0	3.10:1†	—
1	3.00:1	A
2	2.83:1	B
2	3.10:1*	B
3	3.20:1	C
4	3.25:1	D
5	3.50:1	E
6	2.80:1	F
7	3.80:1*	G
7	3.89:1†	H
8	3.89:1*	H
9	4.00:1 (Falcon)	I
9	4.11:1	I
—	2.89:1†	4
—	3.11:1† (Lincoln)	5

\*Ford Only †L-M Only

# 1963-64

## FORD and LINCOLN-MERCURY CAR IDENTIFICATION PLATES

- FORD • FAIRLANE • FALCON • THUNDERBIRD
- RANCHERO • MERCURY • COMET • LINCOLN-CONTINENTAL



ENGINE CODES			
CODE	CYL.	CID	CARB. VENTURI
B	8	406	4V (Hi-Perf.) 1963
B	6	223*	1V (Police) 1964
C	8	289*	2V
D	8	289	4V (Special)
E	6	223*	1V (Taxi)
F	8	260	2V
G	8	406	6V (Special) 1963
H	8	390†	2V (Special)
K	8	289	4V (Hi-Perf.)
L	8	221*	2V (1963)
L	8	221†	2-4V (Special)
M	8	390*	6V (Special)
M	8	396†	4V ('64)
N	8	430†	4V (Lin.-Cont.)
P	8	390	4V (Police)
Q	8	427	4V (Hi-Perf.)
R	8	427	8V (Hi-Perf.)
S	6	144	1V
T	6	200	1V
U	6	170	1V
V	6	223*	1V
X	8	352*	4V (Power Opt.)
Y	8	390†	2V (Reg. Fuel)
Z	8	390	4V

\*Ford Only †L-M Only

TRANSMISSION CODES	
CODE	TRANSMISSION TYPE
1	3 Speed Manual
2	Overdrive
3	Fordomatic 2 Speed*
3	Automatic 2 Speed†
4	Cruise-O-Matic*
4	Automatic Dual Range†
5	4 Speed Manual
6	C4 Dual Range Automatic* (1964)
6	Automatic 3 Speed Dual Range†

\*Ford Only †L-M Only

REAR AXLE CODES		
REGULAR	RATIO	LOCKING
1	2.89:1† (Lincoln)	A
1	3.00:1	A
2	3.10:1	B
3	3.11:1† (Lincoln)	C
3	3.20:1	C
4	3.25:1	D
5	3.50:1	E
6	2.80:1	F
7	3.80:1	G
8	3.89:1	H
9	4.00:1 (Fal. & Comet)	I
9	4.11:1	I

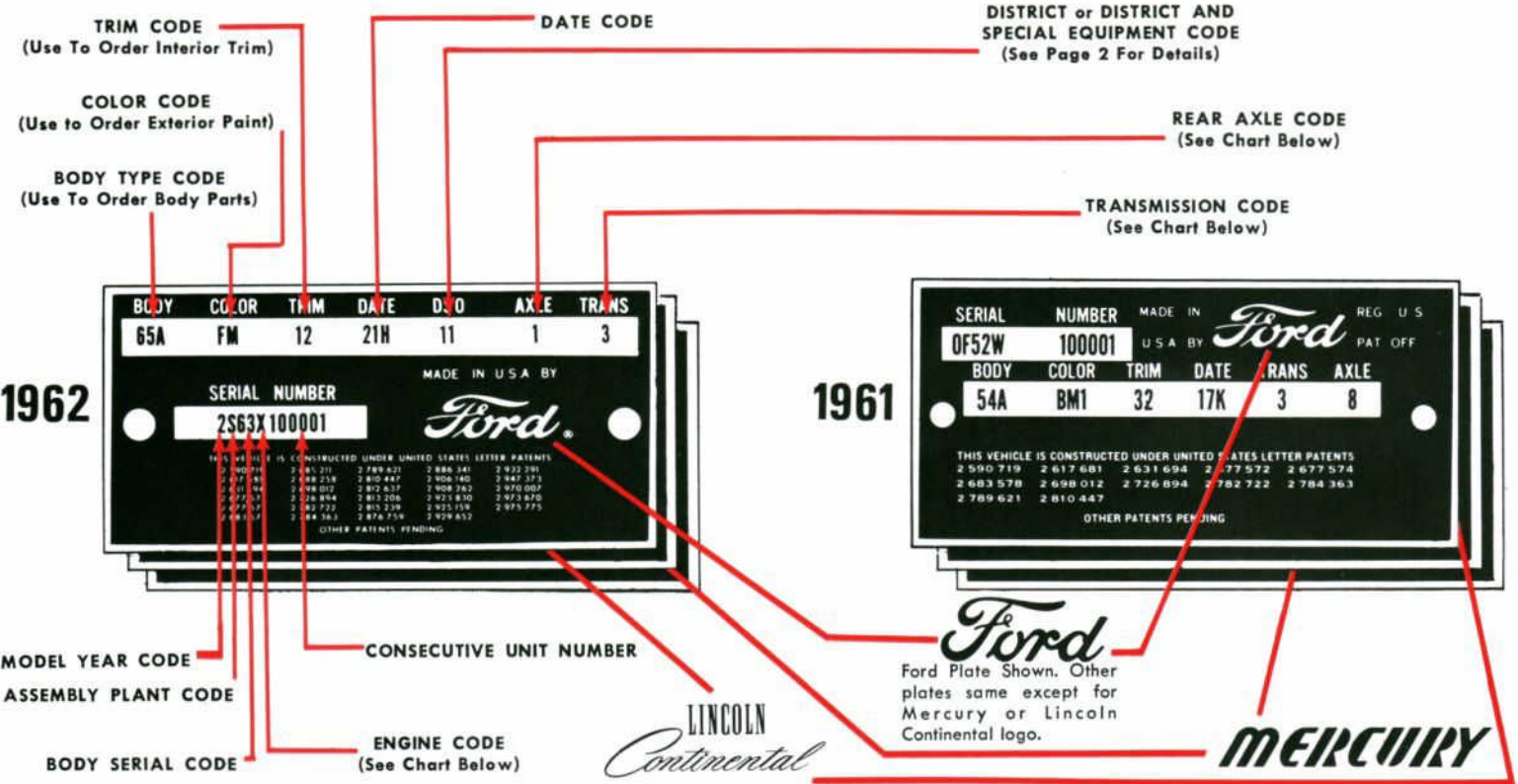
\*Ford Only †L-M Only



# 1961-62

## FORD and LINCOLN-MERCURY CAR IDENTIFICATION PLATES

- FORD • FAIRLANE • FALCON • THUNDERBIRD • RANCHERO
- MERCURY • COMET • METEOR • LINCOLN-CONTINENTAL



### ENGINE CODES

CODE	CYL.	CID	CARB. VENTURI
B	8	406	4V (Hi-Perf.)
F 62	8	260	2V
G	8	406	6V (Special)
H	8	430†	2V (Lin.-Cont.)
L 62	8	221	2V
M	8	390*	6V (Special)
P	8	390	4V (Police)
Q	8	390*	4V (Special)
S	6	144	1V
U	6	170	1V
V	6	223	1V
W	8	292	2V
X	8	352	2V (Special)
Z	8	390	4V
Z 61	8	390*	6V (Special)

\*Ford Only  
†L-M Only

### TRANSMISSION CODES

CODE	TRANSMISSION TYPE
1	3 Speed Manual
2	Overdrive
3	Fordomatic 2 Speed*
3	Automatic 2 Speed†
4	Cruise-O-Matic*
4	Dual Range Automatic†
5	4 Speed Manual
C	Single Range Automatic†

\*Ford Only †L-M Only

### 1961 REAR AXLE CODES

REGULAR	RATIO	LOCKING
1	3.56:1	A
2	3.89:1	B
3	3.10:1	C
4	4.00:1	—
5	3.20:1	—
6	3.00:1	F
7	2.89:1	G
8	2.91:1*	H
8	2.91:1†	—
J	3.50:1	—

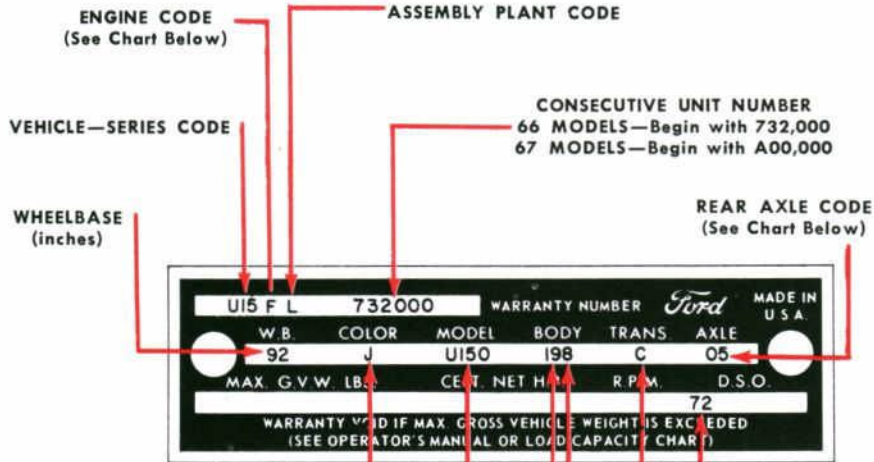
\*Ford Only  
†L-M Only

### 1962 REAR AXLE CODES

REGULAR	RATIO	LOCKING
1	2.89:1	A
1	3.00:1	A
2	3.10:1	B
3	3.20:1	C
4	3.25:1	D
5	3.50:1*	E
5	3.50:1†	—
6	3.56:1*	F
6	3.56:1†	B
7	3.80:1*	G
7	3.80:1†	—
8	3.89:1*	H
8	3.89:1†	F
9	4.00:1(Fal.)	—
9	4.11:1	—

# 1966-69 BRONCO IDENTIFICATION PLATES

• ROADSTER • WAGON • SPORTS UTILITY



## 1966-67

**COLOR CODE**  
(Use to Order Exterior Paint)  
Non-acrylic Enamel—Grey Plate  
Acrylic Enamel—Black Plate

**MODEL CODE**

**TRIM CODE**  
(Use To Order Interior Trim)

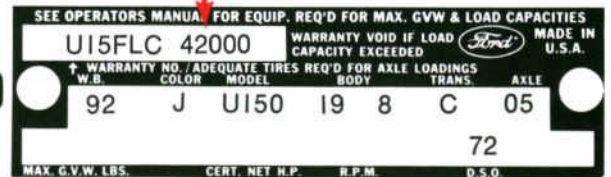
**BODY TYPE CODE**  
(Use To Order Body Parts)

**3-SPEED MANUAL**  
(Only Transmission Available)

**DISTRICT or DISTRICT AND SPECIAL EQUIPMENT CODE**  
(See Page 2 For Details)

**CONSECUTIVE UNIT NUMBER**  
68 MODELS—Begin with C42,000  
69 MODELS—Begin with D82,000

## 1968-69



ENGINE CODES			
CODE	CYL	CID	CAR VENTURI
F	6	170	1V
G	8	302	2V
N	8	289 (66-68)	2V

REAR AXLE CODES						
REGULAR			RATIO	RATING	LOCKING	
66	67-68	69			66	67-68 69
—	—	18	3.50:1	2780 lb.	—	— B8
03	03	03	4.11:1	2780 lb.	A3	A3 A3
04	04	04	4.57:1	2780 lb.	A4	A4 —
—	—	08	3.50:1	3300 lb.	—	— B9
05	05	05	4.11:1	3300 lb.	A5	A5 A5
06	06	06	4.57:1	3300 lb.	A6	A6 —



# 1968-69

## FALCON CLUB WAGON & ECONOLINE IDENTIFICATION PLATES



ASSEMBLY PLANT CODE

ENGINE CODE  
(See Chart Below)

VEHICLE—SERIES CODE

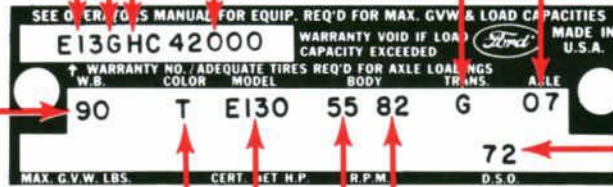
CONSECUTIVE UNIT NUMBER  
68 MODELS—Begin with C 42,000  
69 MODELS—Begin with C 70,000

TRANSMISSION CODE  
(See Chart Below)

REAR AXLE CODE  
(See Chart Below)

WHEELBASE  
(inches)

COLOR CODE  
(Use to Order Exterior Paint)  
Non-acrylic Enamel—Grey Plate  
Acrylic Enamel—Black Plate



DISTRICT or DISTRICT AND  
SPECIAL EQUIPMENT CODE  
(See Page 2 For Details)

MODEL CODE

TRIM CODE  
(Use To Order Interior Trim)

BODY TYPE CODE  
(Use To Order Body Parts)

### ENGINE CODES

CODE	CYL	CID	CARB VENTURI
A	6	240	1V
F	6	170	1V
G	8	302 (69)	2V
N	8	289 (68)	2V

### TRANSMISSION CODES

CODE	TRANSMISSION TYPE
C	3-Speed Manual Shift
G	3-Speed Cruise-O-Matic

### REAR AXLE CODES

REGULAR	RATIO	RATING	LOCKING	REGULAR	RATIO	RATING	LOCKING
07	3.00:1	3050 lb.	—	05	4.11:1	3300 lb.	—
10	3.25:1	3050 lb.	—	06	4.57:1	3300 lb.	—
11	3.50:1	3050 lb.	—	31	3.54:1	4800 lb.	C1
12	4.11:1	3050 lb.	—	33	3.73:1	4800 lb.	C3
13	4.57:1	3050 lb.	—	35	4.10:1	4800 lb.	C5
17	3.25:1	3300 lb.	—	36	4.56:1	4800 lb.	C6
08	3.50:1	3300 lb.	—				



# 1966-67

## FALCON CLUB WAGON & ECONOLINE IDENTIFICATION PLATES



ASSEMBLY PLANT CODE

ENGINE CODE  
(See Chart Below)

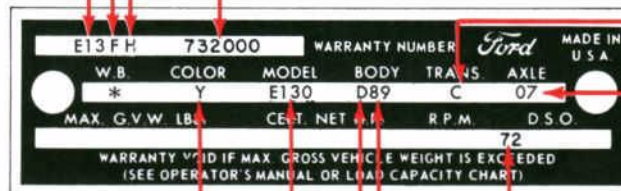
VEHICLE—SERIES CODE

CONSECUTIVE UNIT NUMBER  
66 MODELS—Begin with 732,000  
67 MODELS—Begin with A00,000

TRANSMISSION CODE  
(See Chart Below)

REAR AXLE CODE  
(See Chart Below)

COLOR CODE  
(Use to Order Exterior Paint)  
Non-acrylic Enamel—Grey Plate  
Acrylic Enamel—Black Plate



DISTRICT or DISTRICT AND  
SPECIAL EQUIPMENT CODE  
(See Page 2 For Details)

MODEL CODE

TRIM CODE  
(Use To Order Interior Trim)

BODY TYPE CODE  
(Use To Order Body Parts)

### ENGINE CODES

CODE	CYL.	C.I.D.	CARB. VENTURI
A	6	240	1V
F	6	170	1V

### TRANSMISSION CODES

CODE	TRANSMISSION TYPE
C	3-Speed Manual
G	H.D. Cruise-O-Matic

\*—NOT SHOWN ON FALCON CLUB  
WAGON AND ECONOLINE

### REAR AXLE CODES

REGULAR	RATIO	RATING	LOCKING
01	3.50:1	2300 lb.	—
02	4.00:1	2300 lb.	—
07	3.00:1	3050 lb.	A7
11	3.50:1	3050 lb.	B1
12	4.11:1	3050 lb.	B2
13	4.57:1	3050 lb.	B3



# 1963-64-65 FALCON CLUB WAGON & ECONOLINE IDENTIFICATION PLATES



ASSEMBLY PLANT CODE

ENGINE CODE  
(See Chart Below)

VEHICLE—SERIES CODE

COLOR CODE  
(Use to Order Exterior Paint)  
Non-acrylic Enamel—Grey Plate  
Acrylic Enamel—Black Plate

MODEL YEAR CODE

TRIM CODE  
(Use To Order Interior Trim)

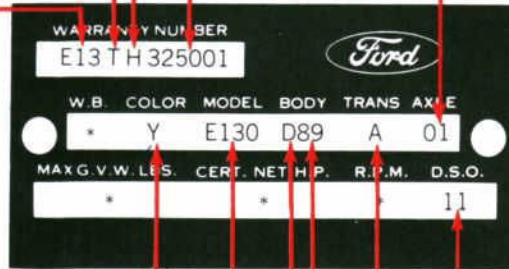
CONSECUTIVE UNIT NUMBER  
63 MODELS—Begin With 325001  
64 MODELS—Begin With 445001  
65 MODELS—Begin With 580001

REAR AXLE CODE  
(See Chart Below)

DISTRICT or DISTRICT AND  
SPECIAL EQUIPMENT CODE  
(See Page 2 For Details)

TRANSMISSION CODE  
(See Chart Below)

BODY TYPE CODE  
(Use To Order Body Parts)



ENGINE CODES			
CODE	CYL.	C.I.D.	CARB. VENTURI
J	6	240	1V (1965 only)
S	6	144	1V (1963-64 only)
T	6	170	1V

TRANSMISSION CODES	
CODE	TRANSMISSION TYPE
A	3-Speed Manual
F	4-Speed Manual
G	H.D. Cruise-O-Matic
6	C4 Dual Range Automatic (1963-65 only)

REAR AXLE CODES					
REGULAR 65	64-63	RATIO	RATING	LOCKING 65	64-63
01	—	3.00:1	2780 lb.	A1	—
—	02	4.00:1	2300 lb.	—	—
03	01	3.50:1	2300 lb.	—	—
04	—	3.50:1	2780 lb.	A4	—
05	03	4.11:1	2780 lb.	A5	A3
06	04	4.57:1	2780 lb.	A6	A4

\*—NOT SHOWN ON  
FALCON CLUB WAGON  
AND ECONOLINE

# 1961-62 FALCON CLUB WAGON & ECONOLINE IDENTIFICATION PLATES

ASSEMBLY PLANT CODE

ENGINE CODE  
(See Chart Below)

VEHICLE—SERIES CODE

WHEELBASE  
(inches)

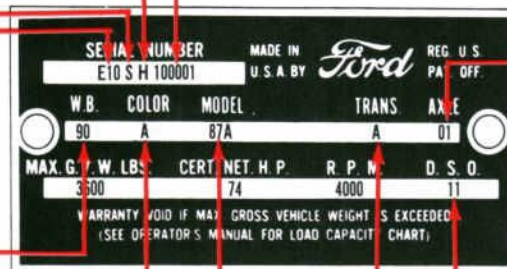
COLOR CODE  
(Use to Order Exterior Paint)

CONSECUTIVE UNIT NUMBER  
1961—Begins With 100001  
1962—Begins With 205001

REAR AXLE CODE  
(See Chart Below)

DISTRICT or DISTRICT AND  
SPECIAL EQUIPMENT CODE  
(See Page 2 For Details)

TRANSMISSION CODE  
(See Chart Below)



MODEL CODE

\*—NOT SHOWN ON  
FALCON CLUB WAGON  
AND ECONOLINE

ENGINE CODES			
CODE	CYL.	C.I.D.	CARB. VENTURI
S	6	144	1V
T	6	170	1V (1962 only)

TRANSMISSION CODES	
CODE	TRANSMISSION TYPE
1	3-Speed Manual (1961)
A	3-Speed Manual (1962)

REAR AXLE CODES	
CODE	RATIO
01	3.50:1
02	4.00:1

## FORD TRUCK SERIES IDENTIFICATION SYSTEM

Ford truck series designations consist of:

- A letter(s) prefix identifying the truck type
- A three or four digit series number indicating the truck size
- A suffix "D" indicating Diesel engine series (except City-Size Diesels, which have a four digit series number 3500 thru 7000 to identify them from comparable gas engine models)
- A Code system is used to identify Gas from Diesel engines under the MODEL section of the Identification plate. *Example: F-950 (Gas), K-950 (Diesel)*

Ford trucks are commonly classified into general weight groups as follows:

SERIES NUMBER	WEIGHT GROUP
100, 250, 350, 3500, 400, 4000	Light
500, 5000, 550, 600	Medium
6000, 700, 7000, 750, 800, 8000 (exc. tandems)	Heavy
750, 800, 8000 Tandems, and all 850, 950, 1000	Extra Heavy

IDENTIFICATION MODEL CODE	PREFIX	SERIES NUMBERS	SUFFIX	SERIES DESCRIPTION
F	F	100 thru 1000		Conventional (Gas)
K	F	6000 thru 8000		Conventional (Diesel)
K	F	950 and 1000	D	Conventional (Diesel)
T	T	800 thru 950		Tandem Axle (Gas)
U	T	8000		Tandem Axle (Diesel)
U	T	850 and 950	D	Tandem Axle (Diesel)
N	N	500 thru 1000		89" BBC Conv. (Gas)
R	N	6000 thru 8000		89" BBC Conv. (Diesel)
R	N	1000	D	98" BBC Conv. (Diesel)
S	NT	850 and 950		89" BBC Tandem (Gas)
W	NT	850 and 950	D	89" BBC Tandem (Diesel)
C	C	550 thru 1000		Tilt Cab (Gas)
D	C	6000 thru 8000		Tilt Cab (Diesel)
L	CT	750 thru 950		Tilt Cab Tandem (Gas)
Q	CT	8000		Tilt Cab Tandem (Diesel)
H	H	1000		Hi-Tilt Cab (Gas)
Y	H	1000	D	Hi-Tilt Cab (Diesel)
J	HT	950		Hi-Tilt Cab Tandem (Gas)
A	HT	950	D	Hi-Tilt Cab Tandem (Diesel)
Z	W	1000	D	Hi-Tilt Tractor (Diesel)
X	WT	1000	D	Hi-Tilt Tractor Tandem (Diesel)
B	B	500 thru 750		School Bus Chassis (Gas)
V	B	6000 and 7000		School Bus Chassis (Diesel)
P	P	100 thru 600		Parcel Delivery (Gas)
G	P	3500 thru 6000		Parcel Delivery (Diesel)

Shown below is a typical Truck identification plate.

Model years are identified by a consecutive unit block number system as shown in the following chart.

### 1961-1969 CONSECUTIVE UNIT PRODUCTION NUMBERS

1961.....100,001—205,000	1964.....445,001—580,000	1967.....A00,000—B49,999
1962.....205,001—325,000	1965.....580,001—731,999	1968.....C00,000—D81,999
1963.....325,001—445,000	1966.....732,000—913,999	1969.....D82,000—F53,999

### ASSEMBLY PLANT CODE

### REAR AXLE CODE

(Use To Order Rear Axle Parts Or Use Code on Housing)

ENGINE CODE  
(See Charts on Page 14)

VEHICLE—SERIES CODE

### CONSECUTIVE UNIT NUMBER

FRONT AXLE CODE  
(Use To Order Front Axle Parts)

WHEELBASE (inches)

SEE OF RATIO MANUAL FOR EQUIP. REQ'D FOR MAX. GVW & LOAD CAPACITIES		WARRANTY VOID IF LOAD CAPACITY EXCEEDED		MADE IN U.S.A.	
WARRANTY NO.	W.B.	COLOR	MODEL	TRANS.	AXLE
TBOEUC00000	158	JM	T802	E81	2M GCE
45000	182	3800	72		
MAX. GVW. LBS.	CERT. NET H.P.	R.F.M.	D.V.O.		

COLOR CODE  
(Use to Order Exterior Paint)

IDENTIFICATION CODE

SERIES NUMBERS

TRIM CODE  
(Use To Order Interior Trim)

BODY TYPE CODE  
(Use To Order Body Parts)

DISTRICT or DISTRICT AND SPECIAL EQUIPMENT CODE  
(See Page 2 For Details)

TRANSMISSION CODE  
(Use To Order Transmission Parts. See Page 15)

\*If Two Symbols Appear, First One Is Auxiliary Transmission.



**B-SERIES**



**C-SERIES**



**H-SERIES**



**P-SERIES**



**NT-SERIES**

# 1961-69 TRUCK ENGINE CODES

## GAS ENGINE CODES

CODE	ENGINE		Number Carb. Venturi	TYPE	Certified Net Horsepower	R.P.M.
	No. Cyl.	Cubic Inch Disp.				
<b>1961</b>						
S	6	144	1		74	4000
A	6	223	1	(Economy)	93	3200
J	6	223	1		114	3600
B	6	262	1		132	3600
C	8	292	2	M/D	135	3800
D	8	292	4	Heavy Duty	153	3800
N	8	302	4		163	3600
F	8	332	4		173	3600
G	8	401	2		180	3400
P	8	401	4		198	3400
H	8	477	2		204	3200
Q	8	477	4		222	3200
R	8	534	4		235	3000
<b>1962-64</b>						
S	6	144	1		79	4000
T	6	170	1		85	3600
1962 A	6	223	1	(Economy)	93	3400
J	6	223	1		114	3600
B	6	262	1	L/D	132	3600
B	6	262	1	H/D	132	3600
C	8	292	2	M/D	135	3800
D	8	292	4	Heavy Duty	153	3600
1962-63 N	8	302	2		159	3800
1962-63 I	8	302	4		163	3600
1962-63 F	8	332	2		167	3800
1962-63 W	8	332	4		173	3600
G	8	401	2		180	3400
P	8	401	4		198	3400
H	8	477	2		204	3200
Q	8	477	4		222	3200
R	8	534	4		235	3000
1964 A	8	330	2	M/D	160	3800
1964 M	8	330	2	H/D	160	3800
1964 K	8	361	2		176	3800
1964 9	8	391	4		199	3800
<b>1965</b>						
T	6	170	1		85	3600
J	6	240	1		129	4000
B	6	300	1	L/D-100/500	150	3600
B	6	300	1	H/D-550/600	150	3600
D	8	352	2		172	4000
A	8	330	2	M/D	160	3800
M	8	330	2	H/D	160	3800
K	8	361	2		176	3800
9	8	391	4		199	3800
G	8	401	2		180	3400
P	8	401	4		198	3400
H	8	477	2		204	3200
Q	8	477	4		222	3200
R	8	534	4		235	3000
<b>1966-69</b>						
A	6	240	1V		129	4000
B	6	300	1V	L/D-100/500	139	3600
B	6	300	1V	H/D-550/600	139	3600
C	8	330	2V	M/D	164	3800
D	8	330	2V	H/D	164	3800
E	8	361	2V		182	3800
F	8	391	4V		199	3800
F	6	170	1V		80	3600
1966 G	8	401	2V	S/D	180	3400
1968-69 G	8	302	2V		158	4000
1968-69 H	8	390	2V	F100/350	190	3900
H	8	401	4V	S/D-850/950 Series	198	3400
1966 J	8	477	2V	S/D	204	3200
K	8	477	4V	S/D	222	3200
L	8	534	4V	S/D	235	3000
1968-69 Y	8	360	2V		179	4000
1966-67 Y	8	352	2V		172	4000

## DIESEL ENGINE CODES

CODE	ENGINE		Number Carb. Venturi	TYPE	Certified Net Horsepower	R.P.M.
	No. Cyl.	Cubic Inch Disp.				
<b>1961</b>						
V	6	672	NH-180		169	2100
W	6	672	NH-195		183	2100
X	6	743	NH-220		208	2100
Y	6	743	NHE-180 (Economy)		169	1950
Z	6	743	NHE-195 (Economy)		184	1950
<b>1962-65</b>						
E	6	330	Dagenham		104	2500
O	6	855	NH-250		234	2100
1962/64 V	6	672	NH-180		169	2100
X	6	743	NH-220		208	2100
Y	6	743	NHE-180 (Economy)		169	1950
Z	6	743	NHE-195 (Economy)		184	1950
1963 2	6	588	V6-200		185	2600
1963/ 3	8	784	V8-265		255	2600
1963/ 4	4	220	Dagenham		65	2500
1964/ 6	6	588	V6E-195		184	2500
1964/ 7	8	785	V8E-235		222	2400
1964/ 8	6	855	NHE-225		213	1950
<b>1966-69</b>						
A	6	855	Cummins-NHC-250		213	2100
B	6	588	Cummins-V6E-195		184	2500
1968-69 C	8	636	Caterpillar		208	2800
1966-67 C	6	743	Cummins-NHE-180		169	1950
1966-68 D	6	743	Cummins-NHE-195		184	1950
1966-68 E	6	743	Cummins-NH-220		208	2100
F	8	784	Cummins-V8E-235		222	2400
G	8	784	Cummins-V8-265		250	2600
1966 H	6	855	Cummins-NHE-225		213	1950
1966-67 H	6	855	Cummins-NHC-250		213	1950
1966 J	6	855	Cummins-NH-250		234	2100
J	6	855	Cummins-NHC-250		234	2100
1967-69 J	4	242	Dorset		74	2800
1968 K	6	525	Caterpillar-1673-A		206	2200
<b>1966-69 (Continued)</b>						
1966-67 K	6	525	Caterpillar-1673-A		208	2200
L	6	525	Caterpillar-1673-B		228	2200
M	6	855	Cummins-NTC-260		247	2100
N	6	855	Cummins-NTC-280		267	2100
P	6	855	Cummins-NTC-300		287	2100
Q	6	855	Cummins-NTC-320		307	2100
R	6	855	Cummins-NTC-335		322	2100
1968-69 S	6	426	Detroit Diesel-6-71N		207	2100
1968-69 T	8	568	Detroit Diesel-8V-71N		298	2100
S	6	426	Detroit Diesel-6-71N	203(1966-67) 218(1967)	2100	
T	8	568	Detroit Diesel-8V-71N	298(1966-67) 318(1967)	2100	
1968-69 U	8	460	Caterpillar-150		137	3200
1966 U	4	220	Dagenham		65	2500
1966 V	6	330	Dagenham		104	2500
1968 V	8	522	Caterpillar-175		162	3200
1967-69 W	6	363	Dorset		116	2800
1967-69 X	6	464	Cummins-CF-160		141	2800
1968-69 Y	6	464	Cummins-C-180		159	2500
1967 Y	6	464	Cummins-C-180		162	2500
1968-69 Z	6	464	Cummins-C-160		142	2500
1968-69 2	6	426	Detroit Diesel-6-71N		225	2100
2	6	426	Detroit Diesel-6-71N	223(1966/) 238(1967)	2100	
1968-69 3	6	638	Caterpillar-1674		252	2200
1968-69 4	8	573	Caterpillar-200		185	3000
6	8	568	Detroit Diesel-8V-71N	275(1966-69) 290(1967)	2100	
7	8	568	Detroit Diesel-8V-71NE		249	1950
1968-69 8	6	318	Detroit Diesel-6V-53N		181	2600
1968 9	6	426	Detroit Diesel-6-71NE		184	1950
9	6	426	Detroit Diesel-6-71NE	180(1966/) 184(1968-69) 195(1967)	1950	

# 1961-69 TRUCK TRANSMISSION CODES

No. Spd.	TYPE	'61	'62	'63	'64	'65	'66	'67	'68	'69
3	Standard-Light Duty (Ford)	A	A	A	▲A	▲A	C	C	C	C
3	Medium Duty (Warner T89C, T89E or T89F)	D	D	D	D	D	D	D	D	D
3	Heavy Duty (Warner T87E or T87G)	E	E	E	E	E	E	E	E	E
3	Overdrive (Ford w/Warner T85 or T86)	B	B	B	B	B	B	B	B	B
3	H/D Cruise-O-Matic	G	G	G	G	G	G	G	G	G
3	C4 Automatic Dual Range				6	6				
4	Synchronized (Warner T19)								P	P
4	Synchronized (Warner T98A or T18)	F	F	F	F	F	F	F	F	F
4	Synchronized (Dagenham-Zephyr)			∅F	∅F	∅F				
4	Synchronized (New Process 435)				▲A	▲A	A	A	A	A
4	Synchronized (New Process 435)				▲N	▲N				
5	Medium Duty-Direct (Clark 250-V)	J	*J	J	J	J	M	M		
5	Medium Duty-Direct (New Process N5A or N5B)		*J							
5	Medium Duty-Overdrive (Clark 251-V0)	K	*K	K	K	K	K	V		
5	Medium Duty-Overdrive (New Process N5C or N5D)		*K							
5	Heavy Duty-Direct (Clark 2651-V1, 2653-V1)	L	*L	L	L	L	L	L		
5	Heavy Duty-Direct (New Process N5G or N5H)		*L							
5	Heavy Duty-Direct (New Process 541-FL)						O	O	O	O
5	Heavy Duty-Direct (Clark 2261-V1, 2622-V1)	W	*W	W	W	W	N	R	R	
5	Heavy Duty-Direct (Clark 305-V)					F	H	H	H	H
5	Heavy Duty-Direct (Clark 307-V)					I	I	I	I	I
5	Heavy Duty-Direct (New Process N5L or N5M)		*W							
5	Heavy Duty-Direct (Clark 282-V)								2	2
5	Heavy Duty-Direct (Clark 285-V)								M	M
5	Heavy Duty-Direct (New Process 541-FD)								9	9
5	Heavy Duty-Overdrive (Clark 264-V0)	M	*M	M	M	M	J	J	J	
5	Heavy Duty-Overdrive (Clark 280-V0)								4	4
5	Heavy Duty-Overdrive (New Process N5J or N5K)		*M							
5	Heavy Duty-Overdrive (New Process 541-FO)						P	P	T	T
5	Extra Heavy Duty-Direct (Clark 385-V)								7	7

No. Spd.	TYPE	'61	'62	'63	'64	'65	'66	'67	'68	'69		
5	Extra Heavy Duty-Direct (Clark 387-V)									D	D	
5	Extra Heavy Duty-Direct (Spicer 5652)	N	N	N	▲N	▲N	Q	Q	Q	Q		
5	Extra H/D-Direct (Spicer 5756B)	P	P	P	P	P	S	S	S	S		
5	Extra Heavy Duty-Overdrive (Clark 380-V0)									G		
5	Exclusive Direct-Diesel (Fuller 5H75)					9	9	G	G	—		
5	Exclusive Direct Drive (401-477-534 eng.) (Spicer 5652)	N	N	N	▲N	▲N				—		
5	Exclusive Direct Drive (401-477-534 eng.) (Spicer 5756B)	P	P	P	P	P				—		
5	Exclusive H/D-Direct (Spicer 6352)-Iron	Q	Q	Q	Q	Q	N	N	N	N		
5	Exclusive H/D-Direct (Spicer 6352B)-Iron	U	U	U	U	U	L	W	W	W		
5	Exclusive H/D-Direct (Spicer 6354)-Aluminum		4	4	4	4	2	2				
5	Exclusive H/D-Direct (Spicer 6354B)-Aluminum		8	8	8	8	6					
5	Exclusive H/D-Direct (Spicer 6452A)-Iron	V	V	V	V	V	M	M				
5	Exclusive H/D-Direct (Spicer 6454A)-Aluminum		7	7	7	7	5					
5	Exclusive H/D-Direct (6852G)-Iron	R	R	R	R	R	U	U	U	U		
5	Exclusive H/D-Direct (Spicer 6854G)-Aluminum		6	6	6	6	4					
5	Exclusive H/D-Overdrive (Spicer 6453A)-Iron	S	S	S	S	S	K	K	K	K		
5	Exclusive H/D-Overdrive (Spicer 6455A)-Aluminum		5	5	5	5	3					
5	Exclusive H/D-Direct-Diesel (Fuller 5H74)					X	X	F	F	E	E	
5	Exclusive H/D-Direct (Fuller T-905-A)-Iron							X	X	X	X	
5	Exclusive H/D-Direct (Fuller T-905-B)-Iron								H	O	O	O
5	Exclusive H/D-Direct (Fuller 5HA-74)-Aluminum								7	7	F	F
5	Exclusive H/D-Direct (Fuller 5HA-75)-Aluminum									8		
5	Exclusive H/D-Direct (Spicer 5852)									3	3	3
	Fordomatic	C										
6	Transmatic (Allison MT 30)	H	H	H	H	H	X	X	X	X		
6	Transmatic (Allison MT 40)		2	2	2	2	Y	Y	Y	Y		
6	Transmatic (Allison MT 41)								Y	Y	Y	
6	Transmatic (Allison MT 42)		3	3	3	3	1	1	1	1		
8	Roadranger H/D-Direct (Fuller R46)	T	T	T	T	T	T	T	T	6		

## 1961-1969 MAXIMUM DUTY TRANSMISSION CODES

No. Speeds	TYPE	CODE			
		1961/65	1966	1967	1968/69
5	Direct Drive (Fuller 5W74)	±A			
5	Direct Drive (Spicer 8052)-Iron	C	A	A	
5	Direct Drive (Spicer 8054)-Aluminum	Z	P		
5	Direct Drive (Spicer 8552-A)-Iron				1
5	Overdrive (Spicer 8051-A & C)-Iron	B	J	P	
5	Overdrive (Spicer 8055-A & C)-Aluminum	Y	O		
10	Direct Drive (Fuller R96)-Iron	D	B	B	B
10	Direct Drive (Fuller RA96)-Aluminum	E	C		
10	Direct Drive (Fuller RT-910)		V	V	V

No. Speeds	TYPE	CODE			
		1961/65	1966	1967	1968/69
10	Direct Drive (Fuller RT-510)				C
10	Overdrive (Fuller RTO-910)			5	5
10	Overdrive (Fuller R960)-Iron	I	E		
10	Overdrive (Fuller RA960)-Aluminum	G	D		
12	Overdrive (Spicer 8125)-Aluminum	O	R	4	
12	Overdrive (Spicer 8312)-Aluminum			8	8
15	Direct Drive (Fuller RT-915)		9	9	9
15	Overdrive (Fuller RTO-915)		I	6	6

\*Clark and New Process transmission assemblies have been used as alternates in production for 1962 trucks.

∅ Econoline only. †1961/64.

▲ Code N applies to trucks with 5 speed Spicer 5652 transmission; also applies to F600 series equipped with New Process 435 four speed transmission.

▲ Code A applies to trucks with 3 speed standard Ford transmission; also applies to C & N600 Series trucks built at Louisville with New Process 435 four speed transmission.

YOUR SOURCE FOR GENUINE FORD AND AUTOLITE ORIGINAL EQUIPMENT PARTS

# AUTOLITE FILTER *FREE FOR ALL* ROARING TO A BOOMING FINISH



**Check This Line-Up of Powerful Sales Leaders!**

**FL-1 The Most Popular Autolite Oil Filter!**  
Check the famous "Autolite Broad Coverage" of this fastest-selling Ford and Chrysler application oil filter:

1966-68 Bronco	1962-68 Fairlane	1957-68 Mercury
1959-68 Chrysler	1960-68 Falcon	1962-63 Meiser
1960-68 Comet	1957-68 Ford	1955-68 Mustang
1968 Couper	1959-68 Imperial	1958-68 Plymouth
1960-68 Dart	1963-68 Kaiser Jeep	1958-68 Rambler
1958-61 DeSoto	1961-62 Lancer	1957-68 T-Bird
1958-68 Dodge	1967-68 Lincoln	1960-68 Valiant
1958-60 Edel	Continental	

**FL-12 New Fast-Moving GM Application Filter!**  
Here's a "Great Mover" that fits the most popular new GM cars:

1968 Buick Special	1963-68 Chevrolet
1964-68 Checker	1962-68 Chevy II
1967-68 Camaro	1966-68 Olds F-85
1964-68 Chevelle	1964-68 Tempest

*(Fits all FL-7 applications plus the new 1968 FL-12 applications)*

**Autolite**  
as low as  
"8 for the  
price of 7!"

**Autolite**  
as low as  
"6 for the  
price of 5!"

## STILL TIME TO CASH IN . . . SEE YOUR AUTOLITE SUPPLIER BEFORE NOV. 30, '68